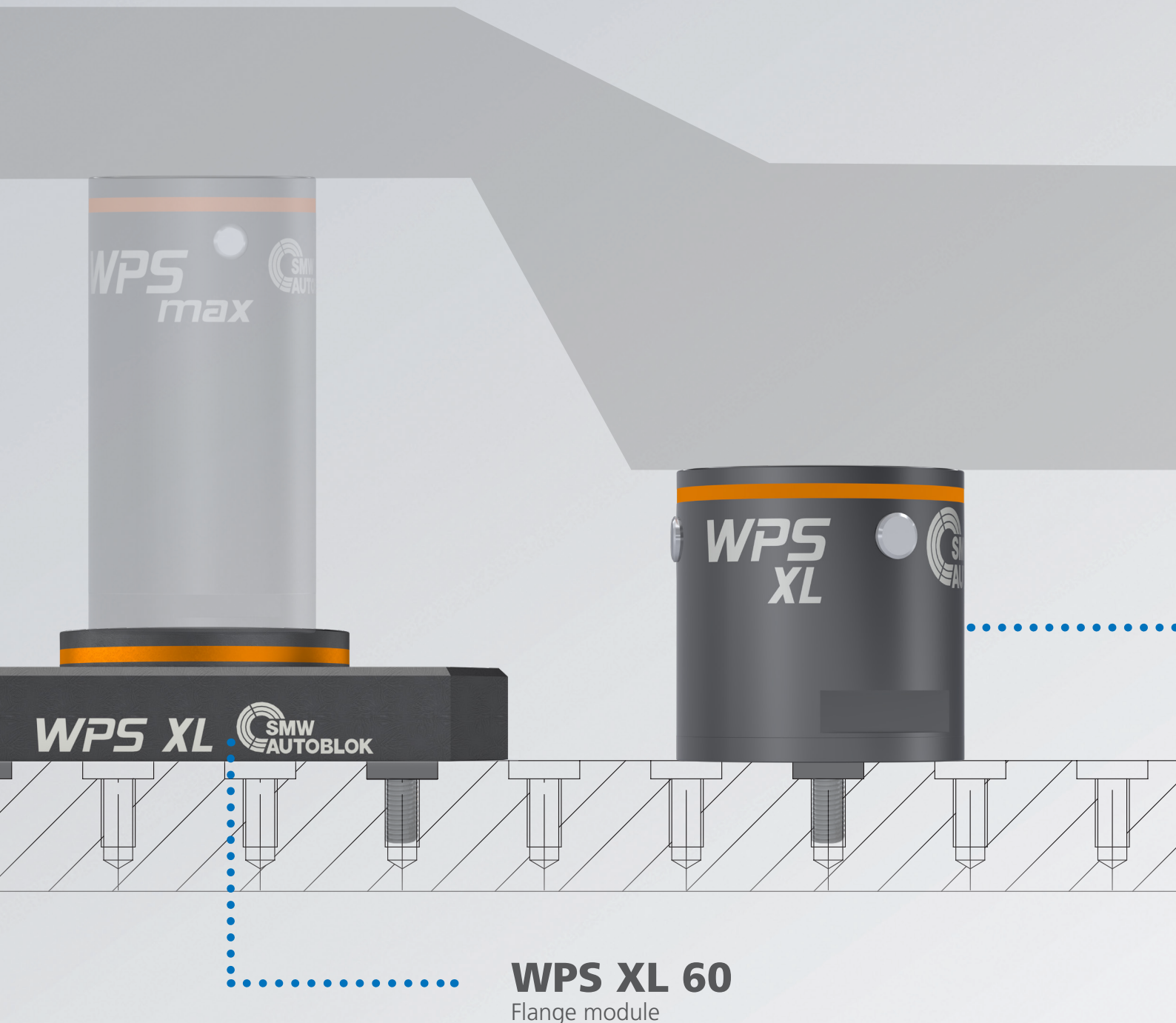
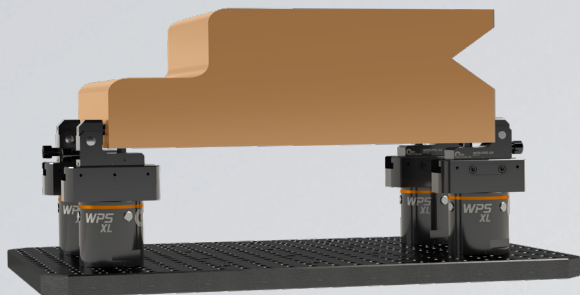


WPS XL

Workpiece positioning system



WPS XL 60
Flange module



1. application example

Workpiece machining with WPS XL + WPS-PPD 24



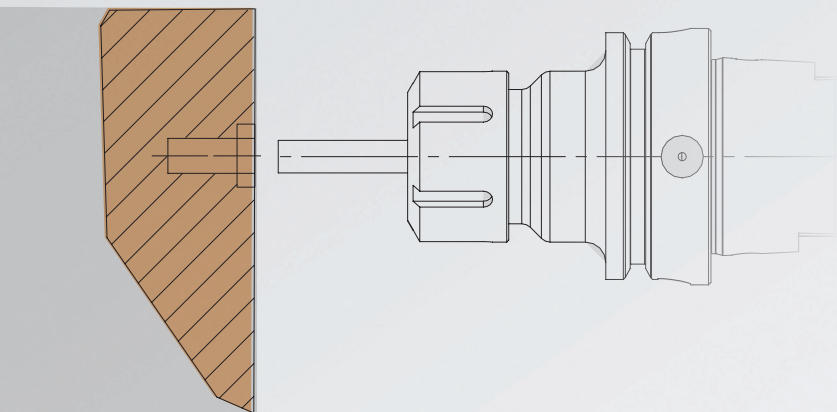
2. application example

Workpiece machining with WPS XL + reducing adapter



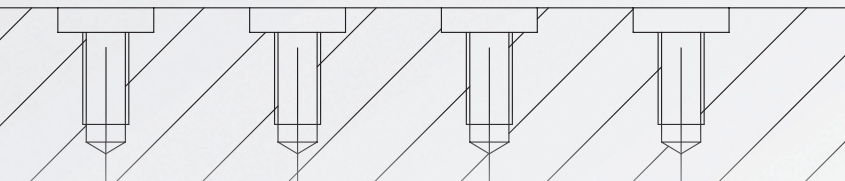
3. application example

Workpiece machining with WPS XL



WPS XL

available in different sizes:
100, 140, 200 mm



Workholding glossary

Modularity

Modular system with a wide range of accessories ensures the flexible clamping of nearly every workpiece geometry. Furthermore, the clamping pins are interchangeable to the proven zero point clamping system APS.



High-precision positioning

The precise taper / face support ensures the interlocking and safe clamping with highest holding forces and maximum rigidity.



Maintenance-free

Clamping modules are hermetic sealed, therefore low maintenance. The availability of the machine is increased.



Increased in efficiency

Huge reduction of the set-up times and maximum efficiency. No other clamping devices are necessary.



5-axis machining

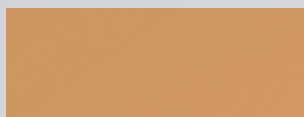
Optimal accessibility, ideal for 5-axis machining without interfering contours.



WPS XL

Order overview





WPS Max
(Module variants,
see page clamping module)



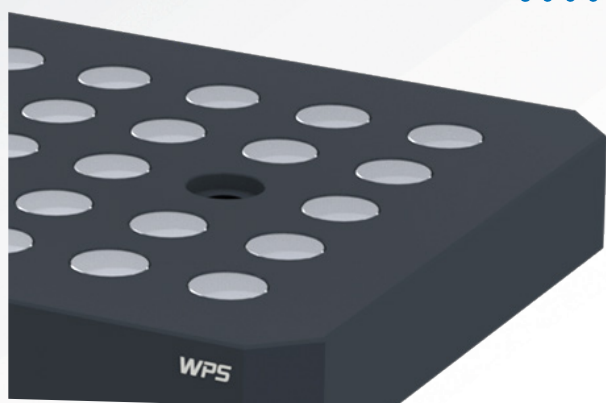
Clamping bolt
(different variants,
see page clamping bolt)



CLAMPING MODULE WPS XL
(Module variants,
see page WPS XL clamping module)



Adaptation ring (optional)
for positioning on grid plate
(different variants,
see page accessories)



WPS XL

Workpiece positioning system

Manual zero point clamping system for workpiece direct clamping

- Single quick-actuation for the rapid opening and closing
- 3 clamping slides



proofline® series
fully sealed – low maintenance

Application/customer benefits

- Huge reduction of set-up times for highest efficiency
- Safe workpiece clamping with maximum holding forces and highest repeatability
- Ideal for 5-axis machining
- Single quick-actuation for the rapid opening and closing of the modules with only 3 rotations
- Flexible configurations for customized use

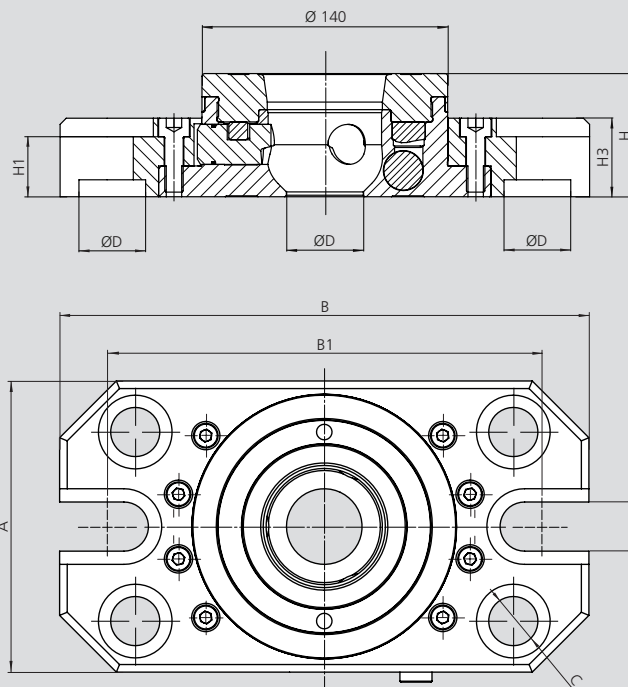
Technical features

- Pull-down force 40 kN
- Holding force 100 kN*
- Max. torque 30 Nm
- Repeatability < 0.01 mm
- Solid drive system with hardened components
- 3 clamping slides for maximum hold while clamping
- **proofline®** = fully sealed - low maintenance

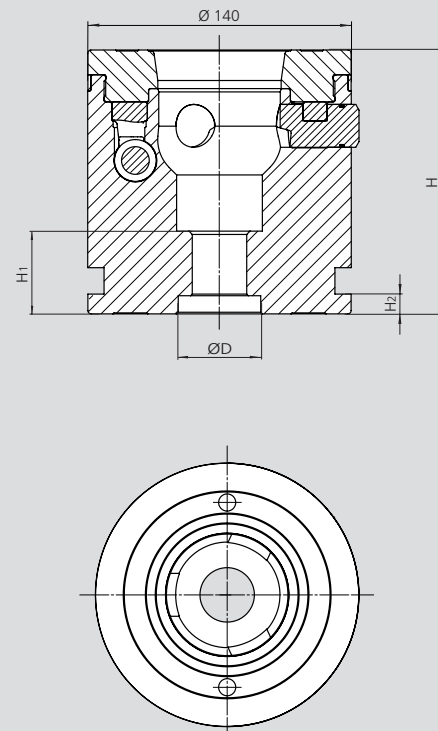
Standard equipment

WPS XL with mounting screw M24 (except WPS XL 60)

WPS XL 60



WPS XL 140, 200



Subject to technical changes.

Technical data

SMW-AUTOBLOK Type	WPS XL-60 467600	WPS XL-100 467602	WPS XL-140 467604	WPS XL-200 467606
A	154	-	-	-
B	280	-	-	-
B1	212	-	-	-
C	26	-	-	-
D / Depth	Ø 40 H6 / 6,5			
H	60	100	140	200
H1	42	19	19	34
H2	-	14	14	14
H3	27,5	-	-	-
Pull-down force (kN)	40			
Repeatability (mm)	< 0.01			
Holding force (kN) Clamping bolt M12 / M16	50* / 75*			
Holding force (kN) Clamping bolt M20 / M24	100 **			

* Holding force for ISO 4762 M12x60 - 12.9 / Holding force for ISO 4762 M16 - 12.9 (see clamping pins)

** Holding force for ISO 4762 M20x70 - 12.9 - Holding force for ISO 4762 M24 - 12.9 (see clamping pins)

*** Holding force for ISO 4762 M24x75 - 12.9 (see clamping pins)

Workpiece positioning system

■ Clamping pins 1 piece

Application/customer benefits

- To be mounted to the workpiece
- Fixation and positioning on the clamping system WPS
- Wear-resistant due to an extra hard protective coating
- Large entry radius of the clamping pins for easy and safe loading

Technical features

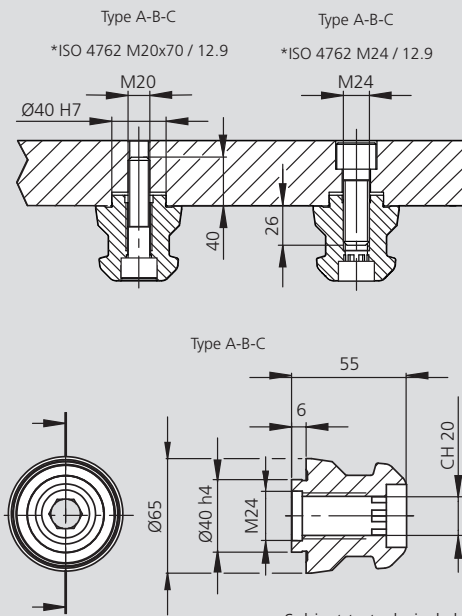
- Centering pin Type A (Standard)
- Sword pin Type B (Positioning pin)
- Clamping pin Type C (with centering play 0.1 mm)

Standard equipment

Clamping pin with mounting screw

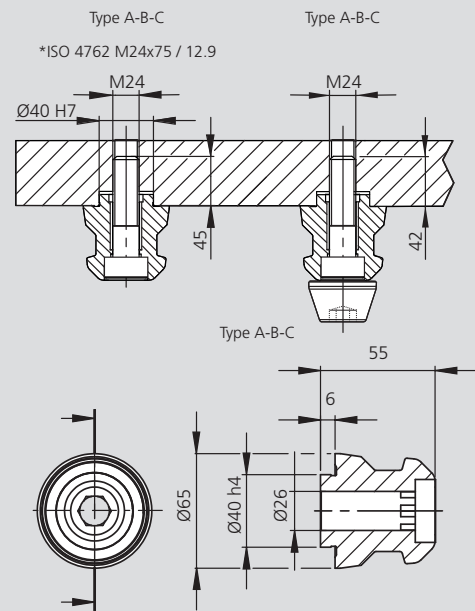


Clamping pin with thread M12 / M16



Subject to technical changes.

Clamping pin Ø26



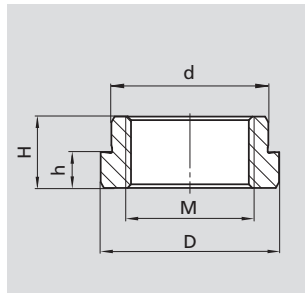
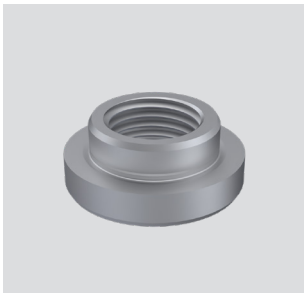
* included in delivery.

Order review

Type	Thread	Type A Id. No.	Type B Id. No.	Type C Id. No.	Weight [kg]
Clamping pin WPS XL	M20 / 12.9	467625	467626	467627	0.8
Clamping pin WPS XL	M24 / 12.9	467625	467626	467627	0.8
Clamping pin WPS XL	Ø26	467635	467636	467637	0.7
Pre-Locator WPS XL	M24		467628		0.9

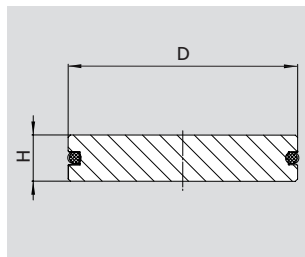
- Adaptation ring
- Protective cover for grid plates
- Slide hammer
- Pre-guide and transport boltVoreinweid

Adaption ring Ø 40(g6) for positioning



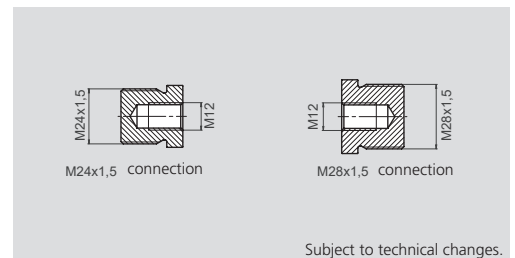
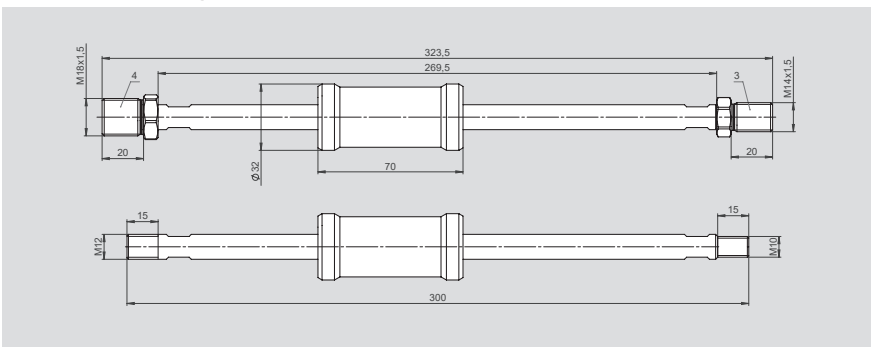
Adaption ring Ø		Dimensions			Id. No.
D (g6)	d (g6)	M	H	h	
Ø 40	Ø 25	M18 x 1.5	12	6	467680
Ø 40	Ø 30	M24 x 1.5	12	6	467681
Ø 40	Ø 34	M28 x 1.5	12	6	467682
Ø 40	Ø 36	M28 x 1.5	12	6	467683
Ø 40	Ø 40	M28 x 1.5	12	-	467684

Protective cover for grid plate



Protection cover Ø			
Type	D	H	Id. No.
D30x06	30	6	467685
D34x06	34	6	467686
D36x06	36	6	467687
D40x06	40	6	467688

Slide hammer (puller) for adapters and clamping pins



Standard equipment: Extractor and Connection (M14x1,5 und M18x1,5)

Slide hammer with connection for M10 and M12 for adapter and clamping pins		Id. No.
		460250
Connection for M12		Id. No.
M24 x1.5 for M12		467689
M28 x1.5 for M12		467690

Pre-Instructor M24



Pre-Instructor M24	Id. No.
	467628

Transport pin



Transport pin	Id. No.
	467632