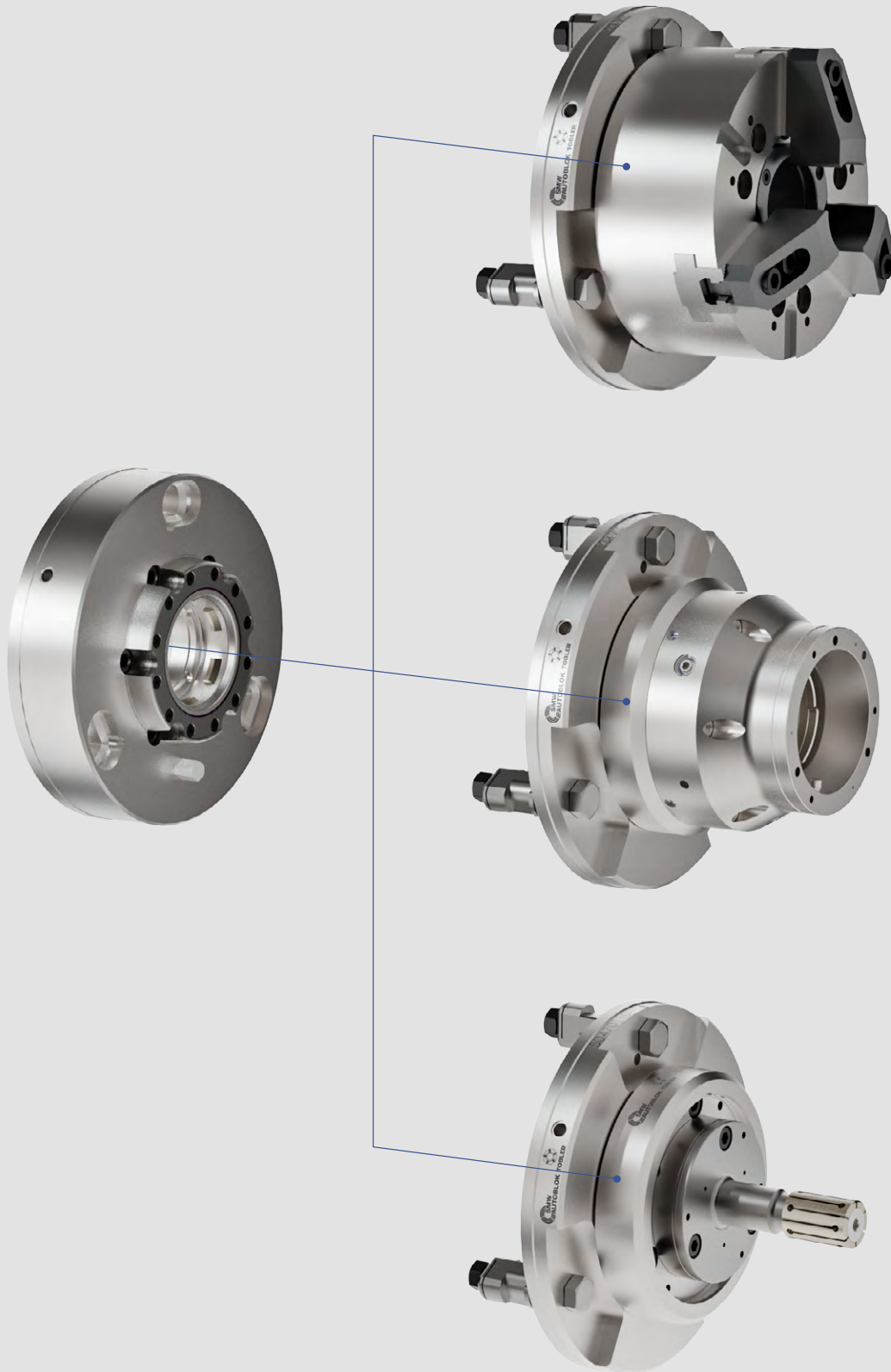




**Universal Quick Change Workholding  
System For Turning CNC Machines**





- Highest repeatability and change over accuracy
- Central actuation for locking and unlocking
- Large through-hole



### Application/customers benefits

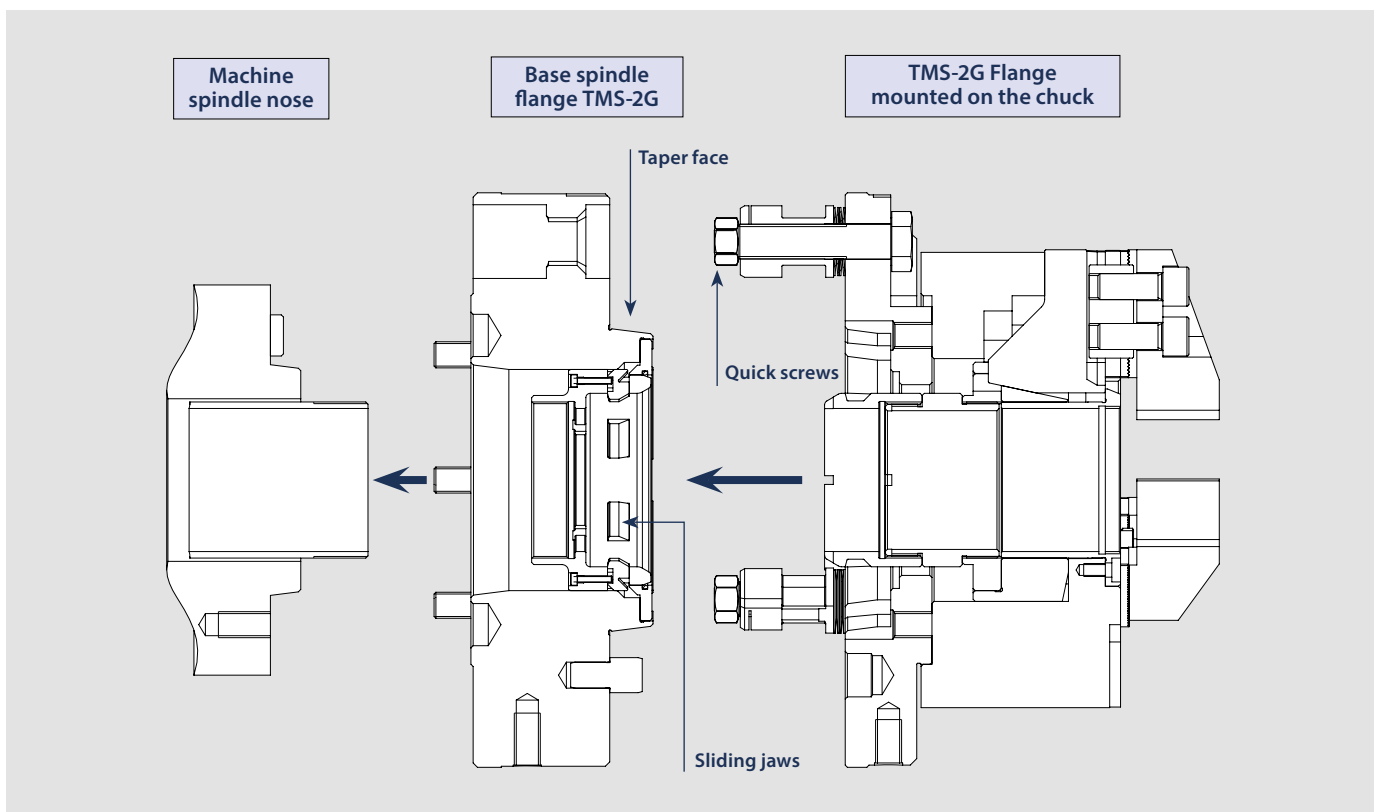
- Very simple system for quick change chucks less than 1 mn
- Quick change over of workholding on CNC machines
- Less down time and high changing accuracy
- Available for any ASA spindle turning machine
- Available for any clamping device (automatic or manual clamping)
- Easy to load and unload (no rotation needed)
- Delivered with lifting ring and manual key safety lock

### Technical features

- Highest repeatability and change over accuracy less than 7  $\mu$
- Central actuation for locking and unlocking.
- Very large through hole
- Protection against contamination

## Function

Only one base TMS-2G spindle flange is mounted on your spindle nose

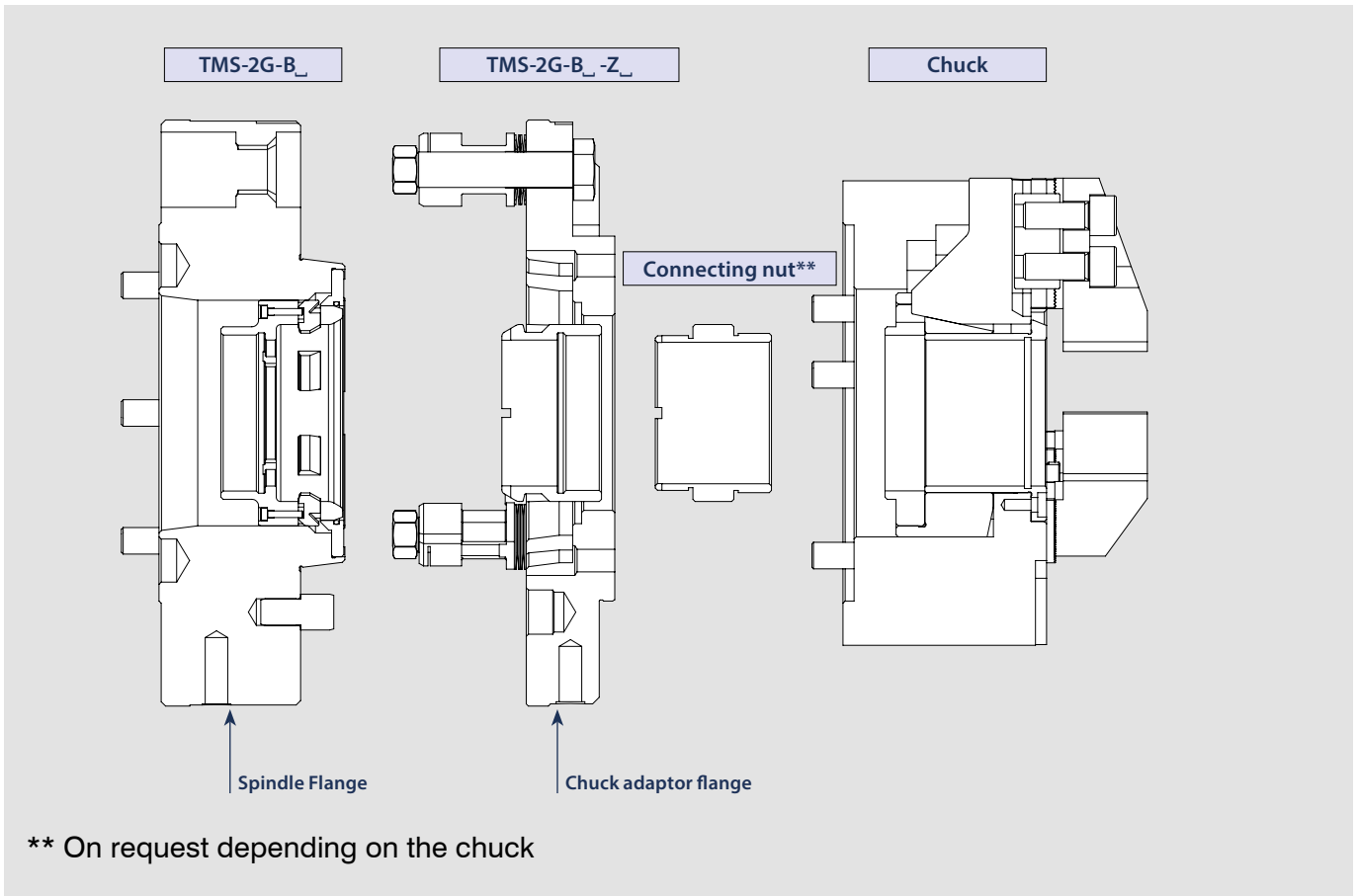


**Several TMS-2G flanges (one for each chuck) could be used. The chuck is mounted on its TMS-2G Flange out of the machine**

### Procedure for the quick change

- Connexion between Spindle flange and chuck flange by a taper-face and a set of quick screws (repeatability < 7  $\mu$ )
- Actuation for clamping is made by an internal patented sliding jaws system with large thru-hole

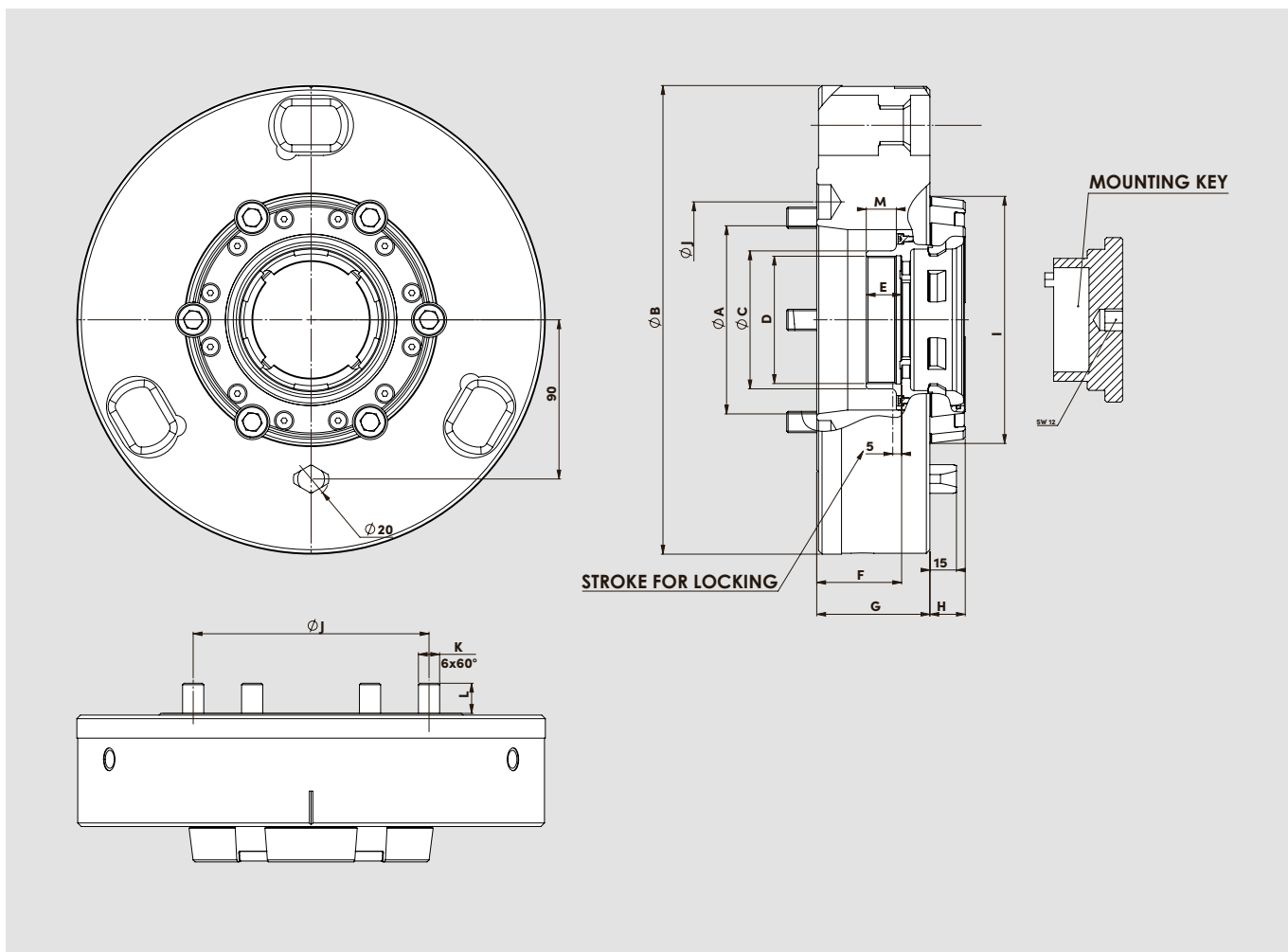
# ORDERING OVERVIEW



SPINDLE FLANGE	
TMS-2G-B_	
5	For spindle A2-5
6	For spindle A2-6
8	For spindle A2-8

CHUCK ADAPTOR FLANGE	
TMS-2G-B_	-Z_ → Centering Ø of chuck
5	For spindle A2-5
6	For spindle A2-6
8	For spindle A2-8

On request : other spindle nose (ASA11"-15"), inside coolant and airsensing

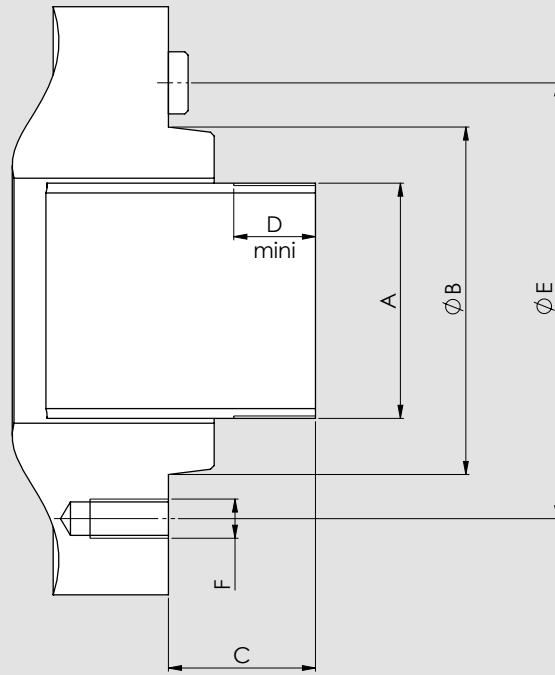


SMW AUTOBLOK Type	TMS-2G-B5	TMS-2G-B6	TMS-2G-B8
<b>Id. N°</b>	<b>50470000</b>	<b>50470070</b>	<b>50470130</b>
A	82,563	106,375	139,719
B	210	265	280
C	60	78	96
D	M55x1.5	M72x1.5	M90x2
E	20	20	20
F	44	48	48
G	60	64	64
H	20	20	20
I	120	139,719	154
J	104 ,8	133,4	171,4
K	M10	M12	M16
L	15	17	23
M	17	17	17
Maxi pull force (KN)	50	70	90
Moment of inertia (Kg/m²)	0,05	0,1	0,15
Weight (Kg)	14	24	27
Max, speed (rpm)	6000	6000	6000

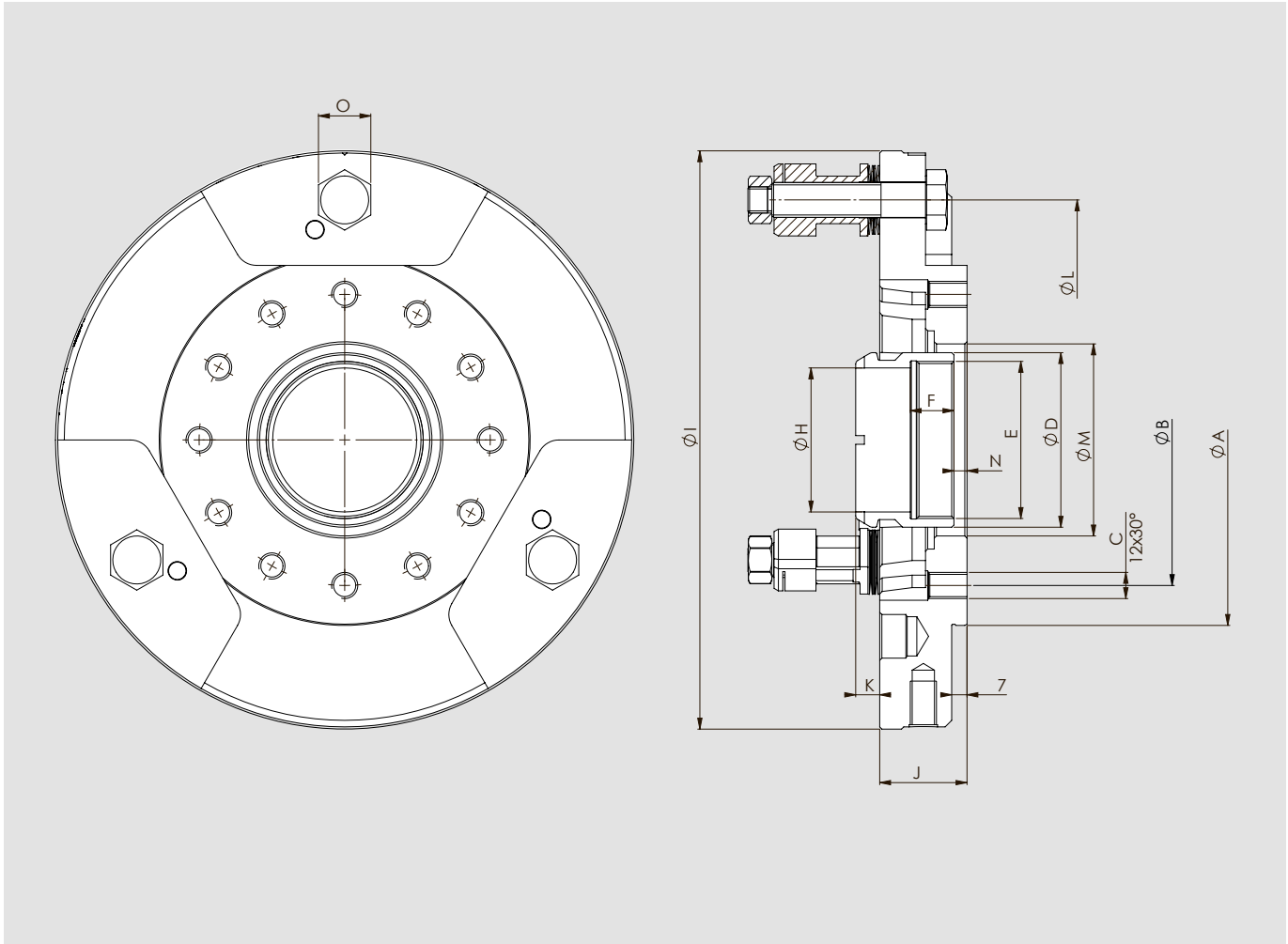


the described design is for draw tube with O.D thread only  
For draw bar with I.D. thread please contact SMW-AUTOBLOK-TOBLER

## COMPLETE FORWARD END POSITION



SMW AUTOBLOK Type	TMS-2G-B5	TMS-2G-B6	TMS-2G-B8
SPINDLE NOSE	A2-5	A2-6	A2-8
A	M55x1.5	M72x1.5	M90x2
B	82,563	106,375	139,719
C	44	48	48
D	23	23	23
E	104.8	133.4	171.4
F	M10	M12	M16

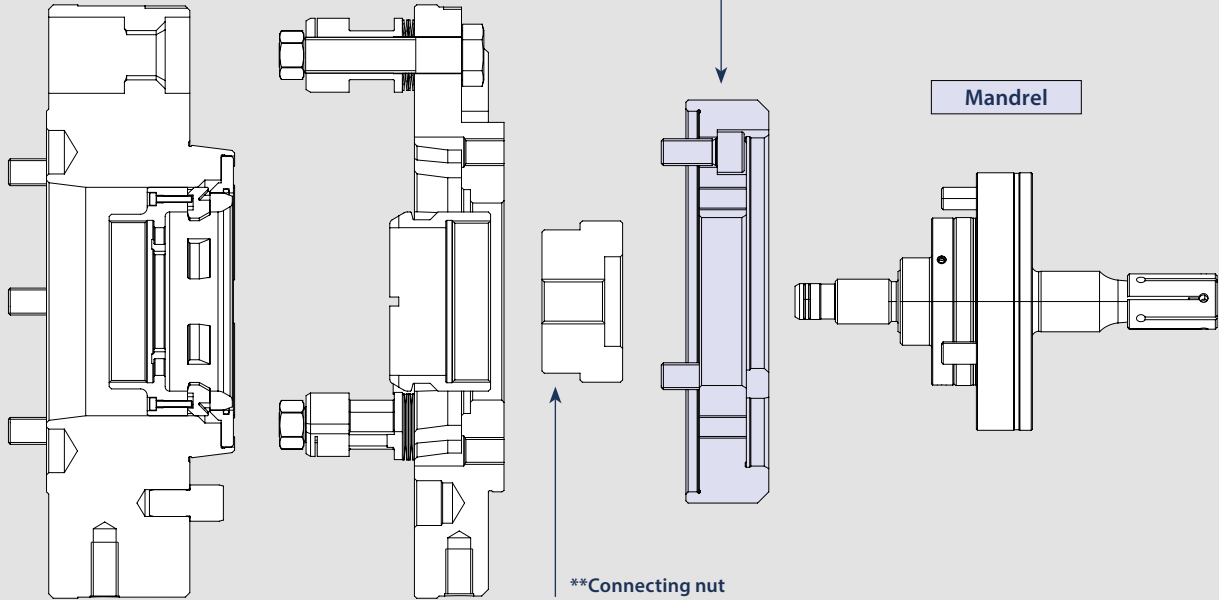


Spindle flange	Chuck adaptor flange	Id. N°	A	B	C	D	E	F	H	I	J	K	L	M	N	O
<b>TMS-2G-B5</b>	TMS-2G-B5-Z115	50470010	115	82,6	M10	57	M49x2	20	43	210	40	11	175	58	6	19
	TMS-2G-B5-Z120	50470020	120	104,8	M10	57	M49x2	20	43	210	40	11	175	58	6	19
	TMS-2G-B5-Z130	50470030	130	104,8	M10	57	M49x2	20	43	210	40	11	175	58	6	19
	TMS-2G-B5-Z140	50470040	140	104,8	M10	57	M49x2	20	43	210	40	11	175	58	6	19
	TMS-2G-B5-Z160	50470050	160	133,4	M12	57	M49x2	20	43	210	40	11	175	58	6	19
	TMS-2G-B5-Z170	50470060	170	133,4	M12	57	M49x2	20	43	210	40	11	175	58	6	19
<b>TMS-2G-B6</b>	TMS-2G-B6-Z130	50470080	130	104,8	M10	80	M72x2	20	66	265	40	11	220	88	6	24
	TMS-2G-B6-Z140	50470090	140	104,8	M10	80	M72x2	20	66	265	40	11	220	88	6	24
	TMS-2G-B6-Z160	50470100	160	133,4	M12	80	M72x2	20	66	265	40	11	220	88	6	24
	TMS-2G-B6-Z170	50470110	170	133,4	M12	80	M72x2	20	66	265	40	11	220	88	6	24
	TMS-2G-B6-Z220	50470120	220	171,4	M16	80	M72x2	20	66	265	40	11	220	88	6	24
<b>TMS-2G-B8</b>	TMS-2G-B8-Z160	50470140	160	133,4	M12	96	M88x2	20	82	280	40	11	235	100	6	24
	TMS-2G-B8-Z170	50470150	170	133,4	M12	96	M88x2	20	82	280	40	11	235	100	6	24
	TMS-2G-B8-Z220	50470160	220	171,4	M16	96	M88x2	20	82	280	40	11	235	100	6	24
	TMS-2G-B8-Z280	50470170	280	235	M20	96	M88x2	20	82	280	57	11	235	145	23	24
	TMS-2G-B8-Z300	50470180	300	235	M20	96	M88x2	20	82	300	57	11	235	145	23	24



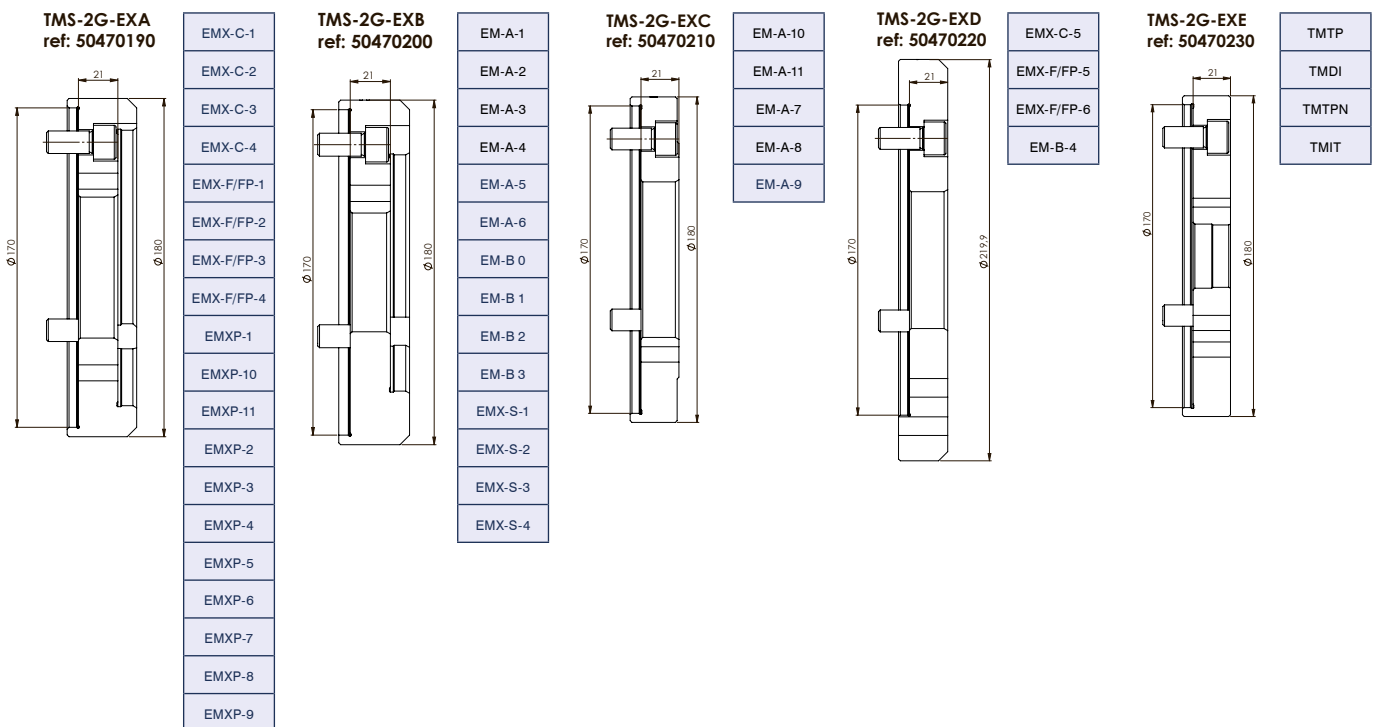
TMS-2G-B5  
TMS-2G-B6  
TMS-2G-B8

TMS-2G-B5-Z170  
TMS-2G-B6-Z170  
TMS-2G-B8-Z170



\*\* On request depending on the mandrel

### Mandrel ADAPTOR FLANGE







Large area with horizontal lines for notes.

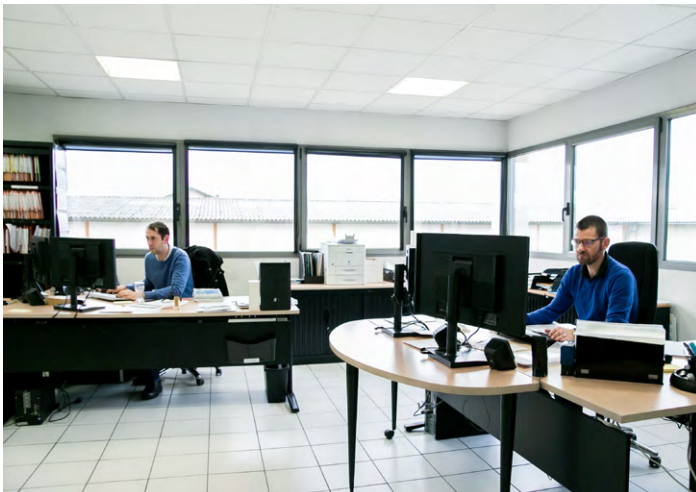
TOBLER, a french manufacturer founded in 1945 with its production plant near Paris Airport, has just joined SMW-Autoblok Group, the worldwide leader in industrial workholding solutions.



SMW-Autoblok France Headquarter, Lyon France  
Development, Sales, Service, Support



TOBLER manufacturing plant, Paris France



Sales and Export department



Technical office for development and applications



Tobler Manufacturing plant

Feel free to join us on our website: [www.tobler-workholding.com](http://www.tobler-workholding.com)



## MAIN OUR CATALOGS



All SMW-Autoblok  
official videos:



## SOME OF OUR VIDEOS



QUICK  
CHANGE JAWS  
KIT-RR



KNCS-2G



APS



TWIN VISE



AUTOMATION



SMW-electronics  
MotionAct -  
360°rotation

**SMW-AUTOBLOK Spannsysteme GmbH**

Postfach 1151 • D-88070 Meckenbeuren  
 Wiesentalstraße 28 • D-88074 Meckenbeuren  
 Tel. +49 (0) 7542 - 405 - 0

Vertrieb Inland: Fax +49 (0) 7542 - 3886  
 E-mail: vertrieb@smw-autoblok.de

Sales International: Fax: +49 (0) 7542 - 405 - 181  
 E-mail: sales@smw-autoblok.de

**AUTOBLOK s.p.a.**

Via Duca D'Aosta n.24  
 I-10040 Caprie - Torino  
 Tel. +39 011 - 9638411 Fax +39 011 - 9632288

E-mail: info@smwautoblok.it

CUSTOMER'S APPLICATION FOR STATIC WORKHOLDING  
 Z.I. P.zza Alessandro Volta, snc I- 86038 Petacciato (CB)  
 Tel. +39 0875 670001

**U.S.A.**

SMW-AUTOBLOK Corporation  
 285 Egidi Drive - Wheeling, IL 60090  
 Tel. +1 847 - 215 - 0591

Fax +1 847 - 215 - 0594  
 E-mail: autoblok@smwautoblok.com

**France**

SMW-AUTOBLOK  
 17, Avenue des Frères Montgolfier - Z.I Mi-Plaine  
 F-69680 Chassieu

Tel. +33 (0) 4 - 727 - 918 18  
 Fax +33 (0) 4 - 727 - 918 19

E-mail: autoblok@smwautoblok.fr

**Japan**

SMW-AUTOBLOK Japan Inc.

1-56 Hira, Nishi-Ku  
 461-Nagoya

Tel. +81 (0) 52 - 504 - 0203  
 Fax +81 (0) 52 - 504 - 0205

E-mail: japan@smwautoblok.co.jp

**Great Britain**

SMW-AUTOBLOK Telbrook Ltd.

7 Wilford Industrial Estate

Ruddington Lane, Wilford

GB-Nottingham, NG11 7EP

Tel. +44 (0) 115 - 982 1133

E-mail: info@smw-autoblok-telbrook.co.uk

**China**

SMW-AUTOBLOK (Shanghai) Work Holding Co.,Ltd.  
 Building 1, N.141 Xuanchun Road, Pudong District  
 201399, Shanghai, P. R. China

Tel. +86 21 - 5810 - 6396

Fax +86 21 - 5810 - 6395

E-mail: china@smwautoblok.cn

**Spain**

SMW-AUTOBLOK IBERICA, S.L.

Ursalto 4 - Pab. 9-10 Pol. 27

20014 Donostia - San Sebastián (Gipuzkoa)

Tel. +34 943 - 225 079

Fax +34 943 - 225 074

E-mail: info@smwautoblok.es

**Mexico**

SMW-AUTOBLOK Mexico, S.A. de C.V.

Acceso III No. 16 Int.9 - Condominio Quadrum

Industrial Benito Juarez - Querétaro, Qro. C.P. 76130

Tel. +52 (442) 209 - 5118

Fax +52 (442) 209 - 5121

E-mail: smwmex@smwautoblok.mx

**Taiwan**

AUTOBLOK Company Ltd.

NO.6, SHUYI RD., SOUTH DIST.,

TAICHUNG, TAIWAN

Tel. +886 4-226 10826

Fax +886 4-226 12109

E-mail: taiwan@smwautoblok.tw

**India**

SMW-AUTOBLOK Workholding Pvt. Ltd.,

Plot No. 4, Weikfield Industrial Estate,

Gat No. 1251, Sanaswadi, Tal - Shirur,

Dist - Pune. 412 208

Tel. +91 2137 - 616 974

Fax +91 2137 - 616 972

E-mail: info@smwautoblok.in

**Czech Republic**

SMW-AUTOBLOK s.r.o.

Merhautova 20

CZ - 613 00 BRNO

Tel. +420 513 034 157

Fax +420 513 034 158

E-mail: info@smw-autoblok.cz

**Poland**

SMW-AUTOBLOK POLAND SP. Z O.O

Stalowa 17,

41-506 Chorzów

Tel. +48 736 059 699

E-mail: info@smwautoblok.pl

**Sweden / Norway / Denmark**

SMW-AUTOBLOK Scandinavia AB

Kommendörsgatan 3

SE-281 35 Hässleholm

Tel. +46 (0) 761 420 111

Tel. +46 (0) 761 420 440

E-mail: info@smw-autoblok.se

**Turkey**

SMW-AUTOBLOK MAKİNA SAN. VE TİC. LTD. ŞTİ.

Yenişehir Mah, Osmanlı Blv,

Volume Kurtköy Ofis, No:9, Kat:2,

D:30, PK: 34912, Pendik, İstanbul

Tel. + 90 216 629 20 19

E-mail: info@smwautoblok.com.tr

**Canada**

SMW AUTOBLOK CANADA CORP

1460 The Queensway - Suite 219

Etobicoke, ON M8Z 1S7

E-mail: info@smwautoblok.ca

**Korea**

SMW-AUTOBLOK KOREA CO., LTD.

1502-ho, 44, Charyong-ro 48beon-gil,

Uichang-gu, Changwon-si,

Gyeongsangnam-do, 51391, Republic of Korea

Tel. +82 55 264 9505

E-mail: info-korea@smw-autoblok.net