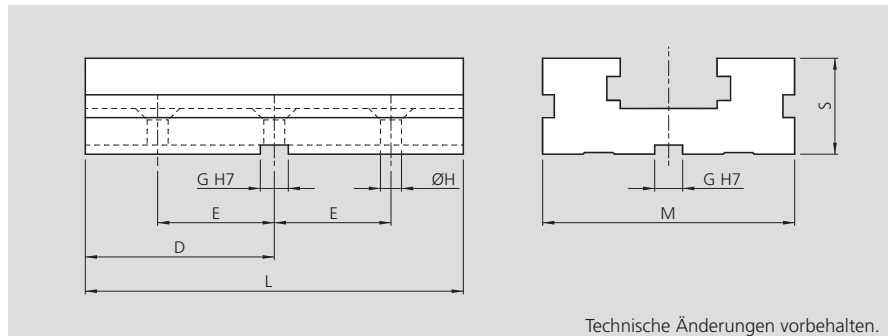


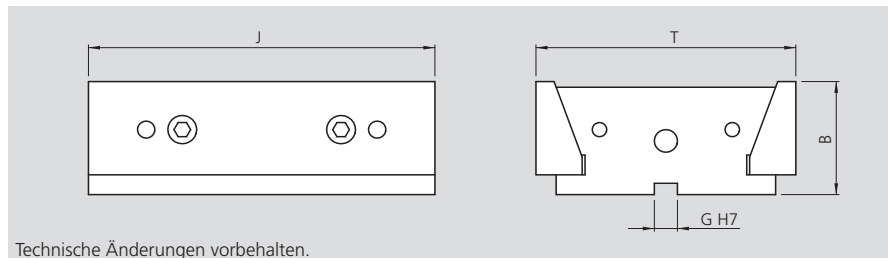
- Zubehör
- Verlängerungselemente

MCI Verlängerungselement mit einem Paar 18 mm Passnutensteine



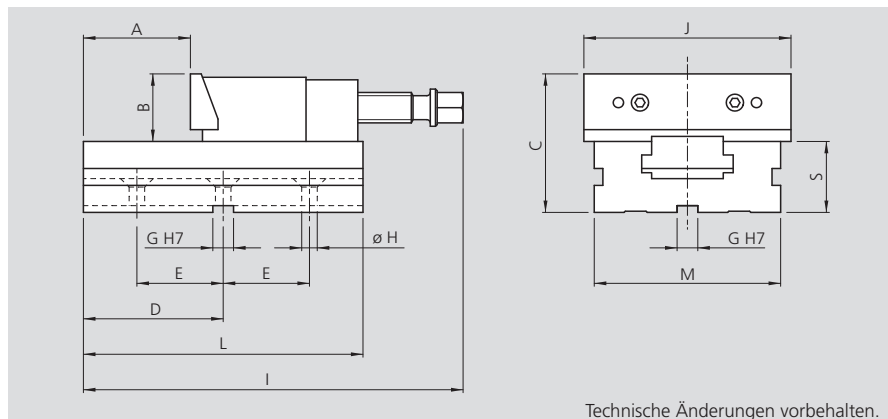
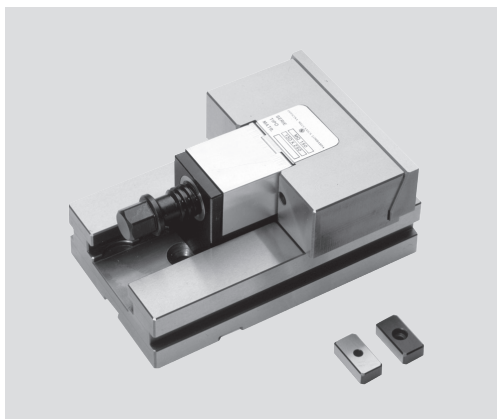
Typ	Id.-Nr.	D [mm]	E [mm]	G [mm]	H [mm]	L [mm]	M [mm]	S [mm]	Gewicht [kg]
MCI 150	58061700	114	75	18	12.5	228	128	52	8
MCI 200	58071700	140	100	18	12.5	280	168	66	18

MCI Doppelanschlag



Typ	Id.-Nr.	B [mm]	G [mm]	J [mm]	T [mm]	Gewicht [kg]
MCI 150	58167210	50	12	150	103	5
MCI 200	58177210	70	18	200	140	15

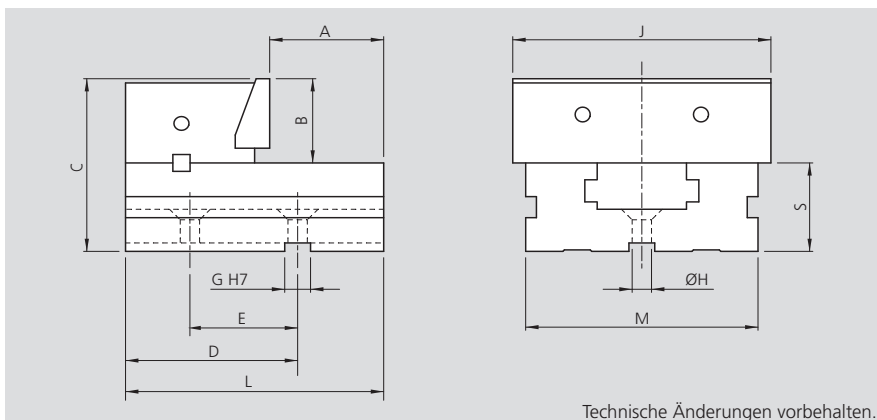
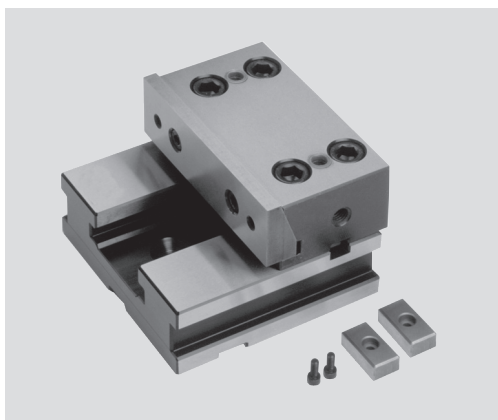
MCI Komplettes Verlängerungselement mit einem Paar 18 mm Passnutensteine



Typ	Id.-Nr.	A [mm]	B [mm]	C [mm]	D [mm]	E [mm]	G [mm]	H [mm]	I [mm]	J [mm]	L [mm]	M [mm]	S [mm]	Gewicht [kg]
MCI 150	58067110	100	50	102	114	75	18	12.5	295	150	228	128	52	14.5
MCI 200	58077110	120	70	136	140	100	18	12.5	370	200	280	168	66	34.5

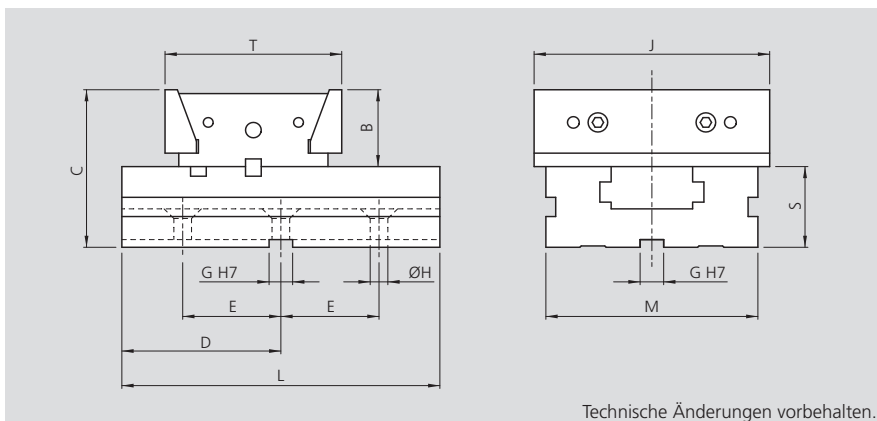
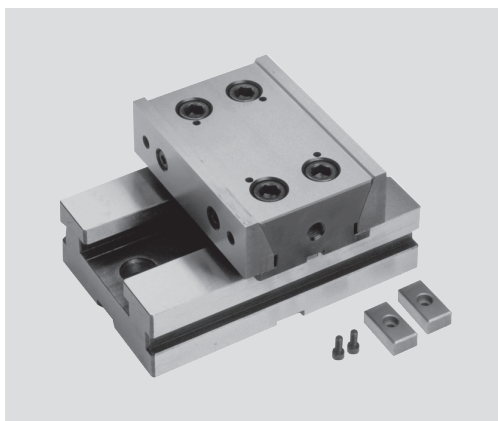
- Zubehör
- Basiselemente

MCI Basiselement Festanschlag mit Backe und 1 Paar 18 mm Nutensteine



Typ	Id.-Nr.	A [mm]	B [mm]	C [mm]	D [mm]	E [mm]	G [mm]	H [mm]	J [mm]	L [mm]	M [mm]	S [mm]	Gewicht [kg]
MCI 150	58067010	85	50	102	120	75	18	12.5	150	170	128	52	9.5
MCI 200	58077010	96	70	136	150	100	18	12.5	200	205	168	66	22

MCI Basiselement Doppelanschlag mit Backe und 1 Paar 18 mm Nutensteine



Typ	Id.-Nr.	B [mm]	C [mm]	D [mm]	E [mm]	G [mm]	H [mm]	J [mm]	L [mm]	M [mm]	S [mm]	T [mm]	Gewicht [kg]
MCI 150	58167010	50	102	100	75	18	12.5	150	200	128	52	103	13
MCI 200	58177010	70	136	125	100	18	12.5	200	250	168	66	140	40