

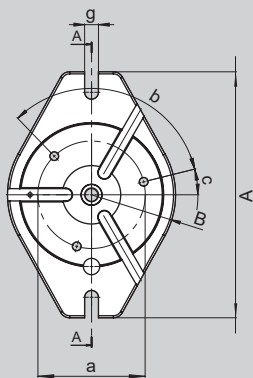
HG-N

Futterflansch zur stationären Aufnahme

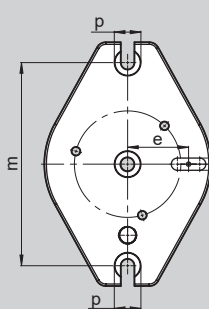
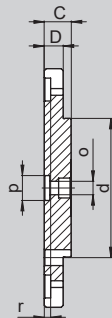
BACKENSCHNELLWECHSEL
Backen-System SMW

- kompatibel mit SMW-Nullpunktspannsystemen
- zur Montage auf Bearbeitungszentren und Fräs-/Bohrmaschinen
- verwendbar mit HG-N / HG-F / HG-2G

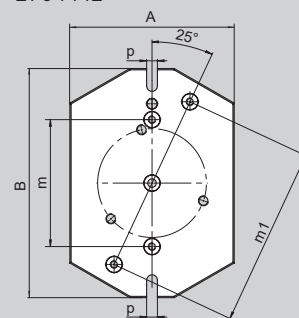
ID-Nr. Flansch
2704440
2704441



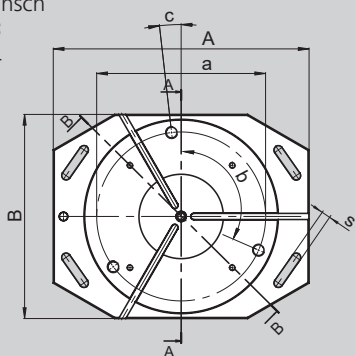
SCHNITT A-A



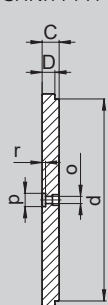
2704442



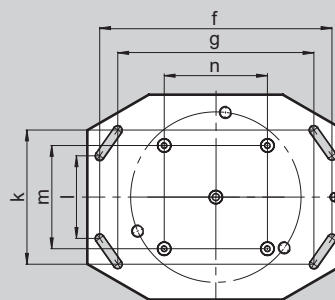
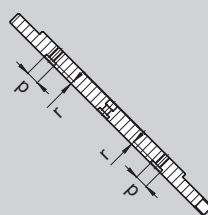
ID-Nr. Flansch
2704443
2704444



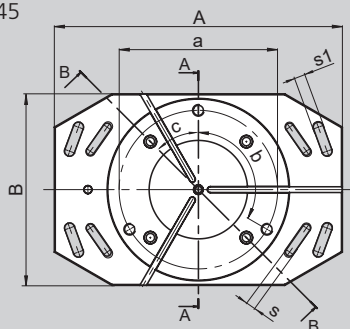
SCHNITT A-A



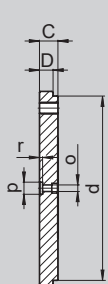
SCHNITT B-B



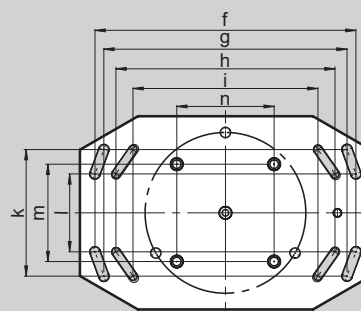
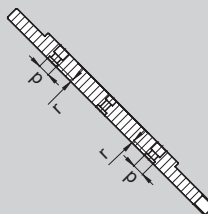
ID-Nr. Flansch
2704445



SCHNITT A-A



SCHNITT B-B

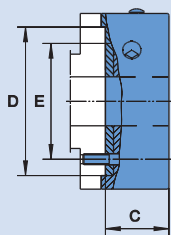


Technische Änderungen vorbehalten.
Für genauere Informationen steht Ihnen unser Kundenservice gerne zur Verfügung.

SMW-AUTOBLOK Typ			HG-N 160	HG-N 210	HG-N 260	HG-N 315	HG-N 400	HG-N 500
Aufnahme			Z140	Z170	Z220	Z300	Z380	Z380
Id.-Nr. Flansch			2704440	2704441	2704442	2704443	2704444	2704445
	A	mm	240	300	361	455	500	600
	B	mm	Ø164	Ø208	259	314	399	399
	C	mm	27	27	30	35	38	38
	D	mm	19	19	22	27	30	28
Lochkreis Futter	a	mm	Ø104.8 / M10	Ø133.4 / M12	Ø171.4 / M16	Ø235 / M20	Ø330.2 / M24	Ø330.2 / M24
	b	Grad	3x120°					
	c	Grad	14°	16°	19°	6,5°	6,5°	45°
	d	mm	140	170	220	300	380	380
Passnut	e / e1	mm	60 / 12H7	60 / 12H7	-	-	-	-
	f	mm	-	-	-	404	450	536
	g	mm	13.5	17	17	324	379.979	499.603
	h	mm	-	-	-	-	-	450
	i	mm	-	-	-	-	-	379.979
	k	mm	-	-	-	160	260	260
	l	mm	-	-	-	80	160	160
Aufnahmebohrung Spannbolzen	m / m1	mm	200	200	200 / 282.843	200	200	200
	n	mm	-	-	-	200	200	200
	o	mm	Ø13.5					
	p	mm	Ø25H7					
	r	mm	5.5					
	s / s1	mm	-	-	-	17 / -	17 / -	17 / 21

■ Bestellübersicht

Futter mit Backen und Flansch



Futter	HG-N - 160	HG-N - 210	HG-N - 260	HG-N - 315	HG-N - 400	HG-N - 500
Aufnahme	Z140	Z170	Z220	Z300	Z380	Z380
C	81	85.5	94	111	125	136
D	140	170	220	300	380	380
E	104.8	133.4	171.4	235	330.2	330.2
Futter mit GBK + WAK + Flansch						
Id.-Nr.	164289	164290	164291	164292	164293	164294