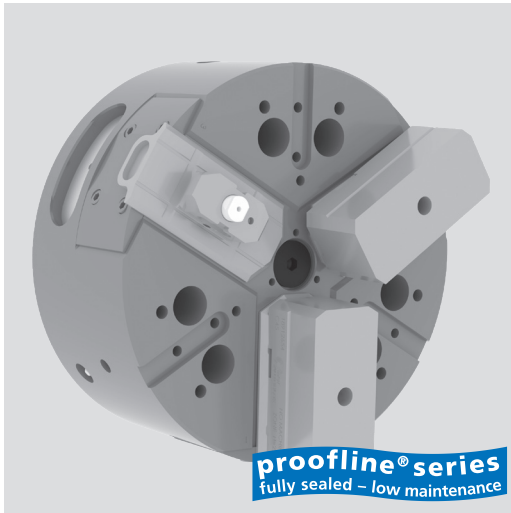


# NTL-RR

LONG STROKE

## High precision power chuck Ø 260 - 400 mm

- Centrifugal force compensation
- Closed center - 3 jaws
- proofline® chucks = fully sealed - low maintenance



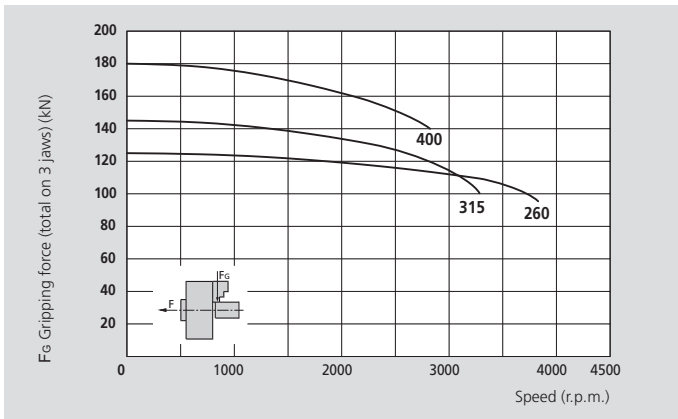
### Application

- Sealed chuck with quick jaws change system
- Easy coupling and uncoupling with spring loaded pin
- For mid to large batch production
- Safety against accidental release
- Suitable for manual and/or robotic use
- Safe clamping through centrifugal force compensation, even of deformation workpieces
- Fully sealed, ideal for dry machining of castings and forgings, or if high pressure coolant is used

### Technical features

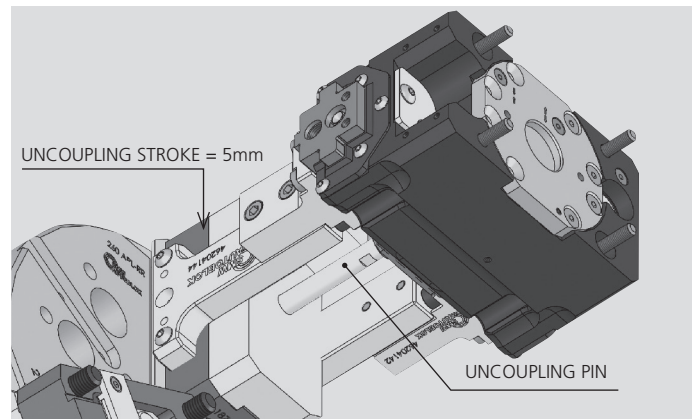
- EXTRA long jaw stroke
- Centrifugal force compensation via counterweights
- Costant gripping force with permanent grease lubrication
- Center bore for coolant and/or air
- Chuck body and internal parts case hardened
- proofline® chucks = fully sealed - low maintenance

### Actual gripping force diagram



The data in the diagram refer to 3-jaw chucks, newly maintained according to their service manuals using SMW-AUTOBLOK K67 grease. The static and dynamic gripping forces have been measured using standard soft top jaws.

### Easy jaw change example



**⚠ Safety advice / danger of damage:**  
When using taller / heavier jaws and / or clamping on a bigger diameter reduce draw pull / rotating speed accordingly.

### Technical data

SMW-AUTOBLOK Type		NTL-RR 260	NTL-RR 315	NTL-RR 400
<b>Id. No. NTL-RR</b>		77189626	77189631	77189640
<b>Number of jaws</b>		3	3	3
<b>Radial jaw stroke</b>	mm	9	11	12
<b>Axial piston stroke</b>	mm	22.3	27.3	30
<b>Max. draw pull*</b>	kN	68	80	100
<b>Max. gripping force*</b>	kN	125	145	180
<b>Max. speed</b>	r.p.m.	3700	3300	2800
<b>Weight (without top jaws)</b>	kg	43,1	67,8	117
<b>Moment of inertia</b>	kg·m <sup>2</sup>	0.39	0.89	2.33
<b>Recommended actuating cylinders</b>	Type	SIN-S 125 / 150	SIN-S 125 / 150	SIN-S 150 / 175

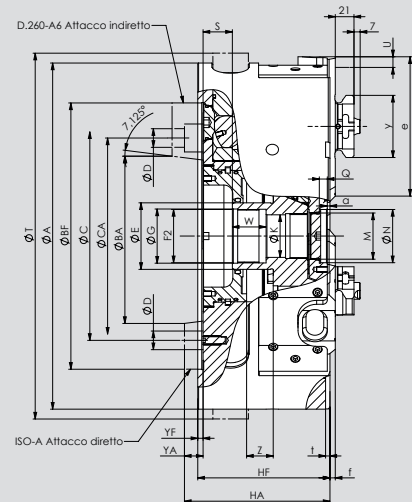
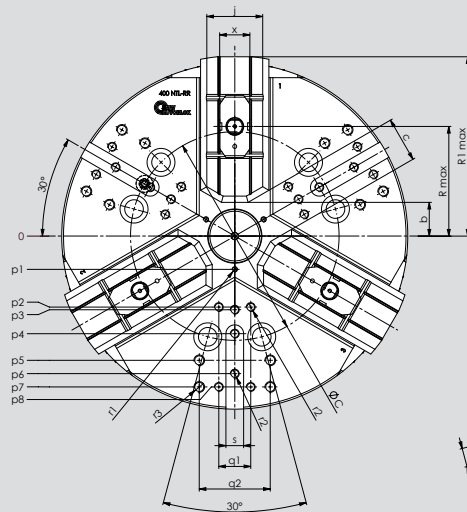
\* For internal clamping reduce the draw pull by 30%.

# High precision power chuck Ø 260 - 400 mm

- Centrifugal force compensation
- Closed center - 3 jaws
- Long stroke
- proofline® chucks = fully sealed - low maintenance

# NTL-RR

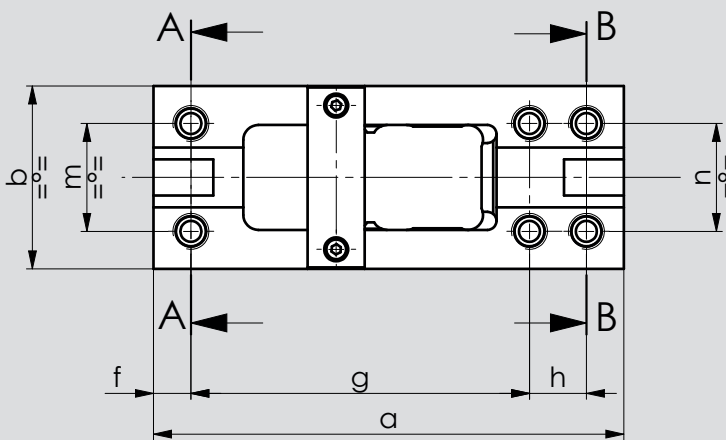
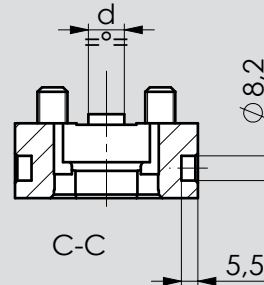
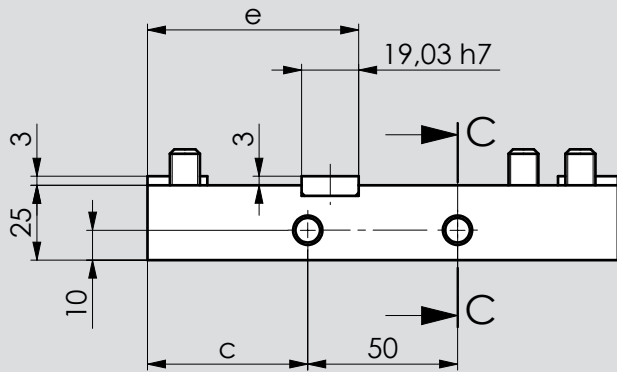
LONG STROKE



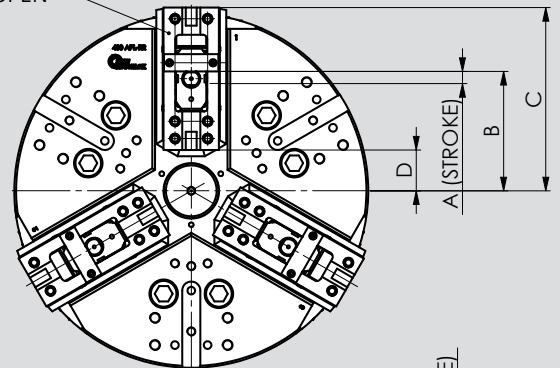
Subject to technical changes.  
For more detailed information please ask our customer service.

SMW-AUTOBLOK Type			NTL-RR 260	NTL-RR 315	NTL-RR 400
ID.No. NTL-RR			77189626	77189631	77189640
Mounting			Z220*	Z220*	Z300*
	<b>A</b>	mm	262	315	390
	<b>Bf/BA H6</b>	mm	220	220	300
	<b>C</b>	mm	171.4	171.4	235
	<b>CA</b>	mm	-	-	-
	<b>D</b>	mm	17	17	21
	<b>E</b>	mm	48	48	75
	<b>F2</b>	mm	M38 x 1.5	M38 x 1.5	M60 x 1.5
	<b>G H8</b>	mm	39	39	61
	<b>Hf/HA</b>	mm	118	125	149
	<b>K</b>	mm	25	25	48
	<b>L</b>	mm	58	58	74
	<b>M</b>	mm	M28 x 1.5	M28 x 1.5	M52 x 1.5
	<b>N H9</b>	mm	34	34	60
	<b>Q</b>	mm	5.5	5.5	9
	<b>R</b>	mm	79.5	95.5	123.5
Chuck open	<b>R1</b>	mm	136	163,5	202
Max. / min.	<b>S</b>	mm	22 / -0.3	20 / -7.3	33 / 3
Chuck fully closed	<b>T</b>	mm	275	328	412
Radial jaw stroke	<b>U</b>	mm	9	11	12
	<b>W</b>	mm	26	26	38
	<b>Yf/YA</b>	mm	5	5	6
Max. / min.	<b>Z</b>	mm	22.3 / 0	27.3 / 0	30 / 0
	<b>a</b>	mm	3	3	3
Min.	<b>b</b>	mm	10	12	26
Min.	<b>c</b>	mm	7.4	7.9	30
	<b>e</b>	mm	113	136,5	157
	<b>f</b>	mm	3	3	6
	<b>j</b>	mm	48	58	63
	<b>x</b>	mm	28	28	34
	<b>y</b>	mm	58	64	70
	<b>p1</b>	mm	21	21	37,5
	<b>p2</b>	mm	-	60	80
	<b>p3</b>	mm	55	62,5	83
	<b>p4</b>	mm	70	80	110
	<b>p5</b>	mm	102	102	140
	<b>p6</b>	mm	102	120	155
	<b>p7</b>	mm	-	135	170
	<b>p8</b>	mm	-	-	170
	<b>q1</b>	mm	-	30	36
	<b>q2</b>	mm	60	60	80
	<b>r1</b>	mm	M6 / 10	M6 / 10	M6 / 12
	<b>r2</b>	mm	M8 / 17	M8 / 17	M10 / 19
	<b>r3</b>	mm	M10 / 19	M10 / 19	M12 / 22
	<b>s</b>	mm	16	16	20
	<b>t</b>	mm	5	5	5

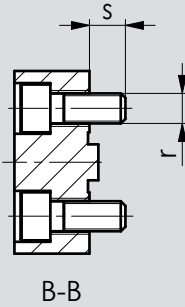
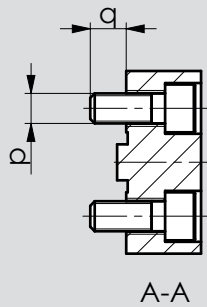
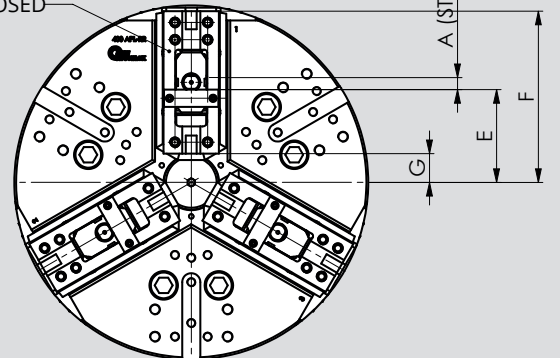
\* see the chuck flanges explained on chapter 12.



PALLET  
EXTERNAL CLAMPING  
FULL OPEN



PALLET  
INTERNAL CLAMPING  
FULL CLOSED

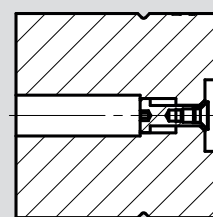
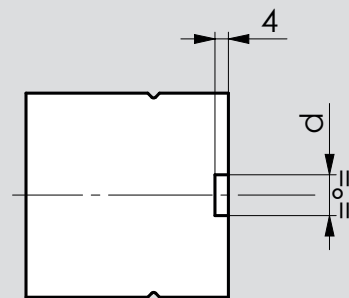
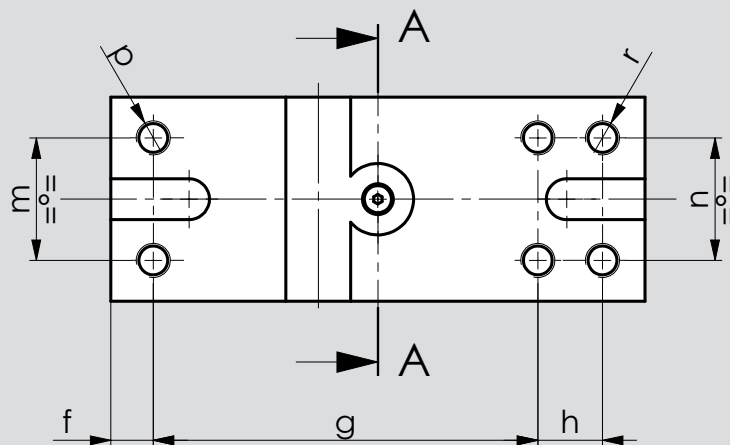


Subject to technical changes.  
For more detailed information please ask our customer service.

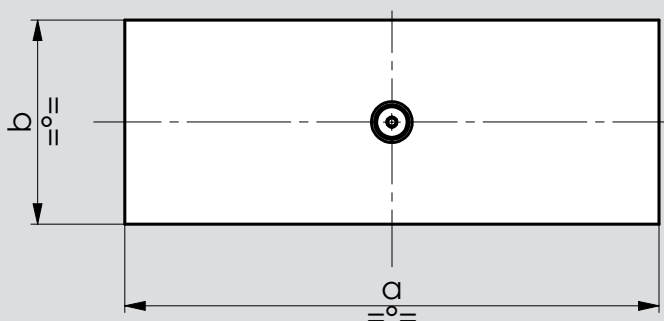
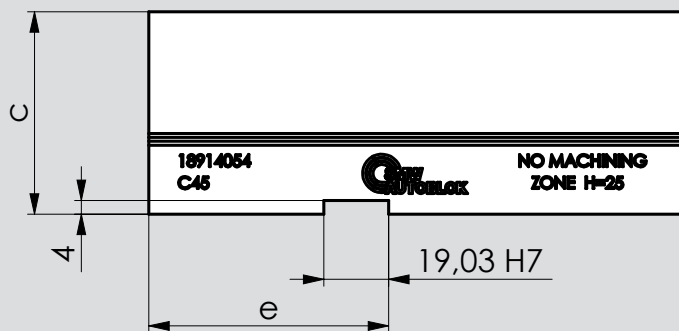
Model		215	260	315	400
ID.No.		18762154	18762654	18763154	18764054
a	mm	91	113	136	157
b	mm	46	51	54	61
c	mm	20,5	31,5	43	53,5
d (H7)	mm	8	12	12	12
e	mm	40,7	50	61,5	70,5
f	mm	8,5	10,5	14	12,5
g	mm	72	90	108	113
h	mm	x	x	x	19
m	mm	26	30	30	36
n	mm	26	30	30	36
p	mm	M6	M10	M10	M10
q	mm	12	12	12	12
r	mm	M8	M10	M10	M10
s	mm	14	12	12	12

	A	B	C	D	E	F	G
215 APL-RR	8,5	71,7	112,4	21,4	53,7	104	13
260 APL-RR	9,7	86	136	23	63,3	126,3	13,3
315 APL-RR	12,1	102	163,5	27,5	76,9	151,4	15,4
400 APL-RR	13,3	131,5	202	45	102,2	188,7	31,7
	A	B	C	D	E	F	G
260 NTL-RR	9	86	136	23	64	127	14
315 NTL-RR	11	102	163,5	27,5	78	152,5	16,5
400 NTL-RR	12	131,5	202	45	103,4	189,9	32,9

## TOP JAWS



A-A



Subject to technical changes.  
For more detailed information please ask our customer service.

SMW-AUTOBLOK Model		APL-RR 215	APL-RR 260	APL-RR 315	APL-RR 400
C45		18912154	18912654	18913154	18914054
a	mm	91	113	136	157
b	mm	45	50	50	60
c	mm	44,5	49,5	49,5	59,5
d (H7)	mm	8	12	12	12
e	mm	40,7	50	61,5	70,5
f	mm	8,5	10,5	14	12,5
g	mm	72	90	108	113
h	mm	x	x	x	19
m	mm	26	30	30	36
n	mm	26	30	30	36
p	mm	M6x14	M10x14	M10x14	M10x14
r	mm	M8x16	M10x14	M10x14	M10x14