

## Precision bench vise

# CLAK-System

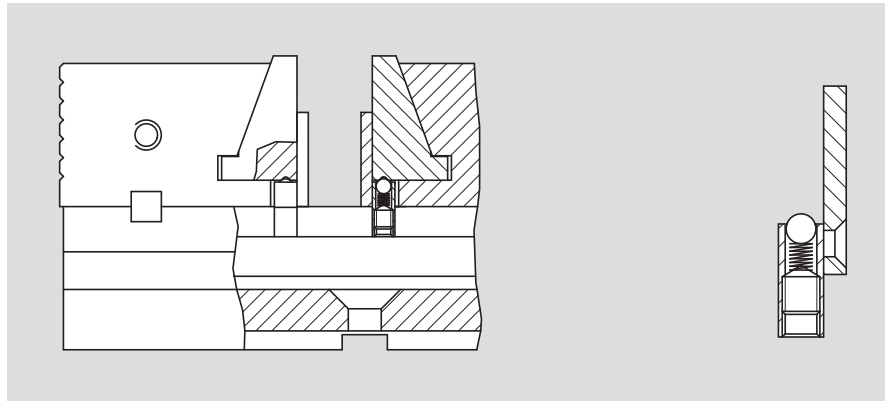
- Parallels for quick change CLAK-System
- Suitable for TCi and MCi vices

This new patented system allows the quick change of parallels, angular parallels, V-jaws, soft jaws for any type of workpieces.

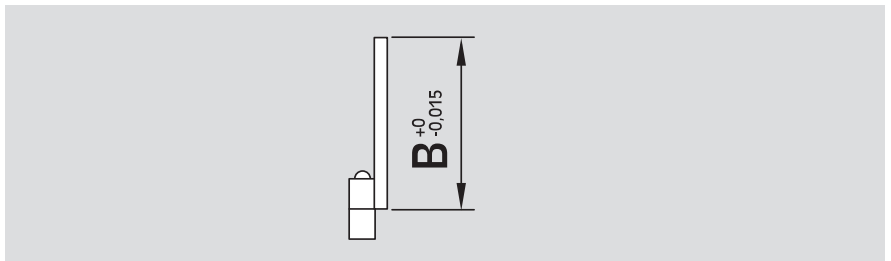
### Benefits:

- Reduce downtime and set-up time
- Elimination of clamps and locks thanks to the patented self locking system
- Increase the accuracy of finished parts and reduce scrap

All components are case hardened and precision ground.

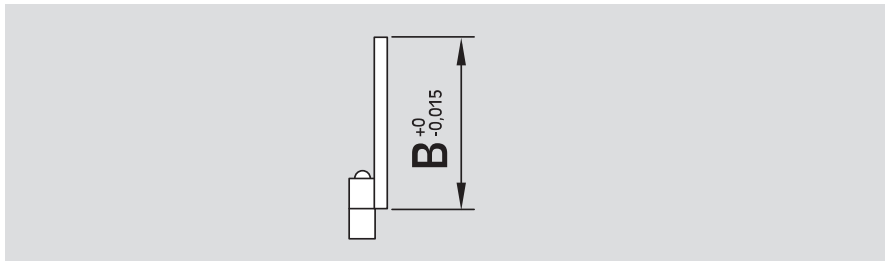
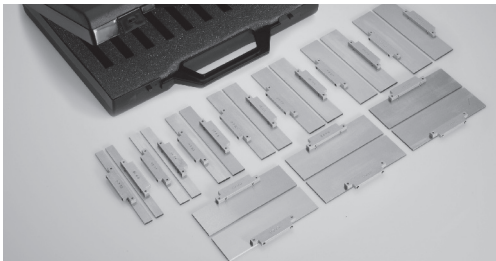


## Set 6 pairs of parallels for quick change CLAK-System



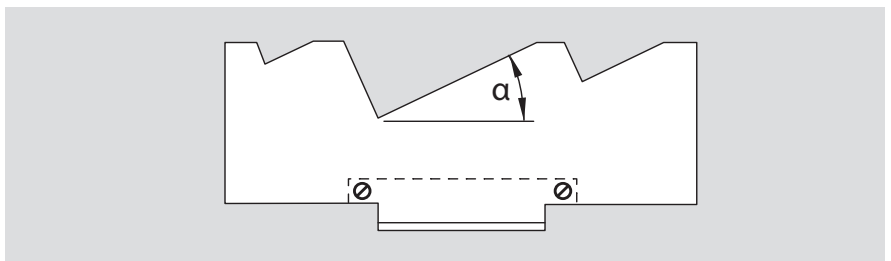
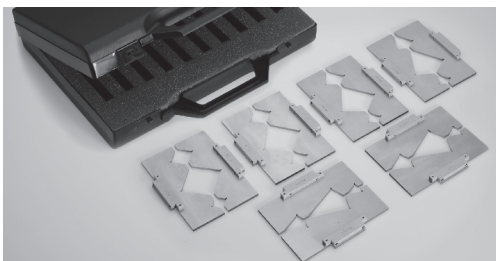
Type	Id. No.	B					
		[mm]	[mm]	[mm]	[mm]	[mm]	[mm]
TCi 110	58019206	10	15	20	25	30	35
TCi / MCi 150	58029206	20	25	30	35	40	45
TCi / MCi 200	58039206	20	30	40	50	60	65

## Set 10 pairs of parallels for quick change CLAK-System



Type	Id. No.	B									
		[mm]	[mm]	[mm]	[mm]	[mm]	[mm]	[mm]	[mm]	[mm]	[mm]
TCi 110	58019210	10	12	15	20	25	28	30	33	35	37
TCi / MCi 150	58029210	12	15	20	25	30	35	40	43	45	47
TCi / MCi 200	58039210	20	25	30	35	40	45	50	55	60	65

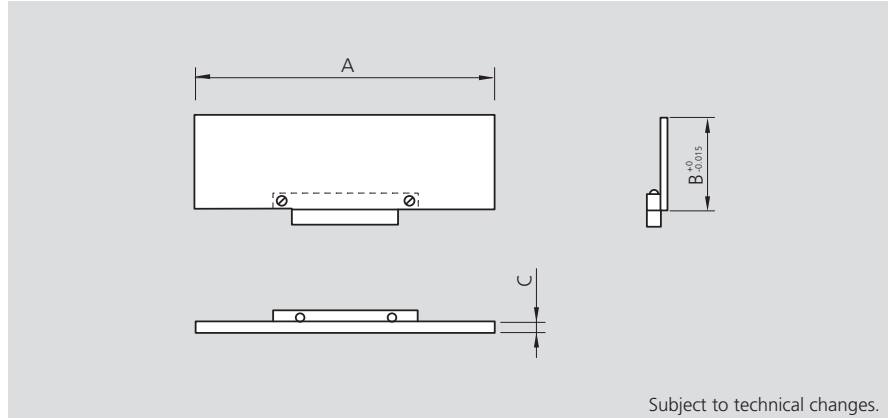
## Set 6 pairs of prism parallels for quick change CLAK-System



Type	Id. No.	$\alpha$					
		[mm]	[mm]	[mm]	[mm]	[mm]	[mm]
TCi 110	58019306	20°	25°	30°	35°	40°	45°
TCi / MCi 150	58029306	20°	25°	30°	35°	40°	45°
TCi / MCi 200	58039306	20°	25°	30°	35°	40°	45°

- Parallels for quick change CLAK-System
- Suitable for TCi and MCI vices

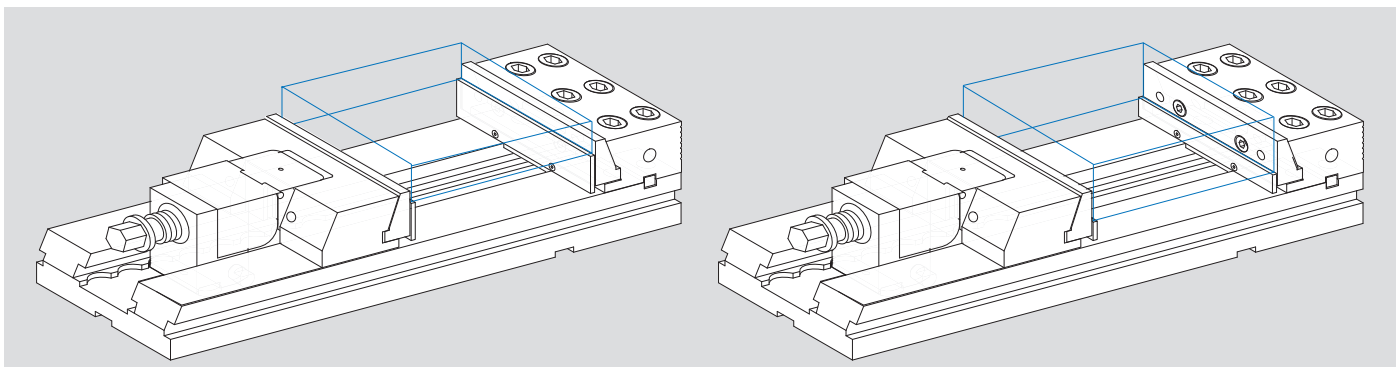
### Parallels (1 pair)



Subject to technical changes.

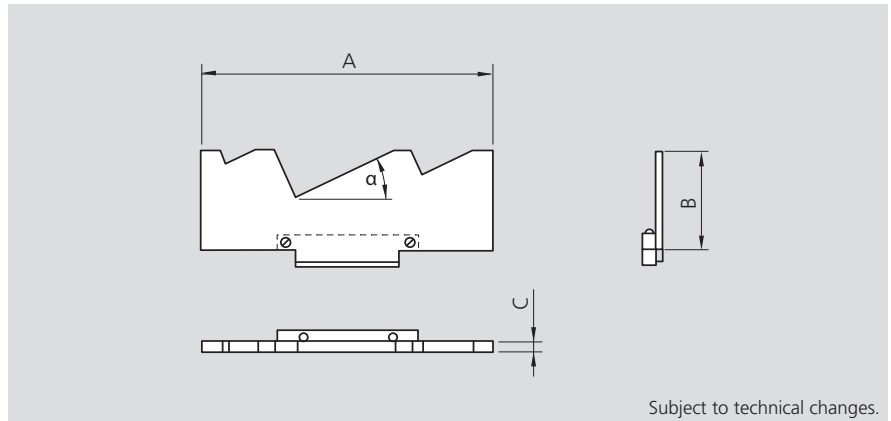
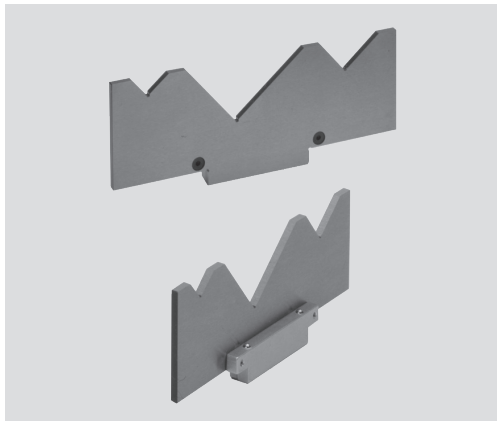
Type	Id. No.	B [mm]	A [mm]	C [mm]
TCi 110	58013510	10	106	3
TCi 110	58013512	12	106	3
TCi 110	58013515	15	106	3
TCi 110	58013520	20	106	3
TCi 110	58013525	25	106	3
TCi 110	58013528	28	106	3
TCi 110	58013530	30	106	3
TCi 110	58013533	33	106	3
TCi 110	58013535	35	106	3
TCi 110	58013537	37	106	3
TCi 150 / MCI 150	58023512	12	146	3
TCi 150 / MCI 150	58023515	15	146	3
TCi 150 / MCI 150	58023520	20	146	3
TCi 150 / MCI 150	58023525	25	146	3
TCi 150 / MCI 150	58023530	30	146	3
TCi 150 / MCI 150	58023535	35	146	3
TCi 150 / MCI 150	58023540	40	146	3
TCi 150 / MCI 150	58023543	43	146	3
TCi 150 / MCI 150	58023545	45	146	3
TCi 150 / MCI 150	58023547	47	146	3
TCi 200 / MCI 200	58033520	20	196	4
TCi 200 / MCI 200	58033525	25	196	4
TCi 200 / MCI 200	58033530	30	196	4
TCi 200 / MCI 200	58033535	35	196	4
TCi 200 / MCI 200	58033540	40	196	4
TCi 200 / MCI 200	58033545	45	196	4
TCi 200 / MCI 200	58033550	50	196	4
TCi 200 / MCI 200	58033555	55	196	4
TCi 200 / MCI 200	58033560	60	196	4
TCi 200 / MCI 200	58033565	65	196	4

### Application examples



- Parallels for quick change CLAK-System
- Suitable for TCi and MCi vices

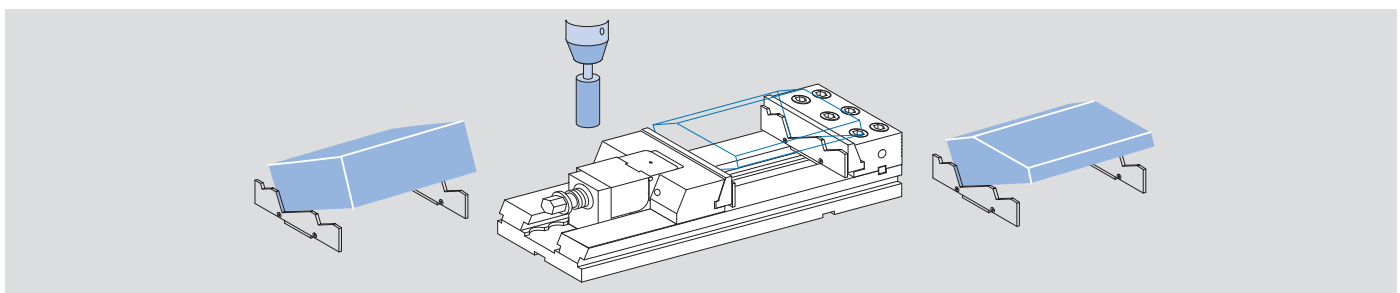
Angular parallels (1 pair)



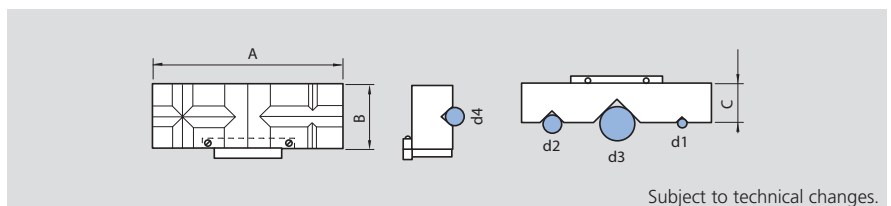
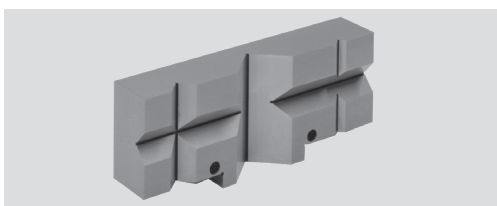
Subject to technical changes.

Type	Id. No.	$\alpha$ [mm]	A [mm]	B [mm]	C [mm]
TCi 110	58013620	20	106	40	4
TCi 110	58013625	25	106	40	4
TCi 110	58013630	30	106	40	4
TCi 110	58013635	35	106	40	4
TCi 110	58013640	40	106	40	4
TCi 110	58013645	45	106	40	4
TCi 150 / MCi 150	58023620	20	146	50	4
TCi 150 / MCi 150	58023625	25	146	50	4
TCi 150 / MCi 150	58023630	30	146	50	4
TCi 150 / MCi 150	58023635	35	146	50	4
TCi 150 / MCi 150	58023640	40	146	50	4
TCi 150 / MCi 150	58023645	45	146	50	4
TCi 200 / MCi 200	58033620	20	196	70	4
TCi 200 / MCi 200	58033625	25	196	70	4
TCi 200 / MCi 200	58033630	30	196	70	4
TCi 200 / MCi 200	58033635	35	196	70	4
TCi 200 / MCi 200	58033640	40	196	70	4
TCi 200 / MCi 200	58033645	45	196	70	4

Application examples



V-jaw

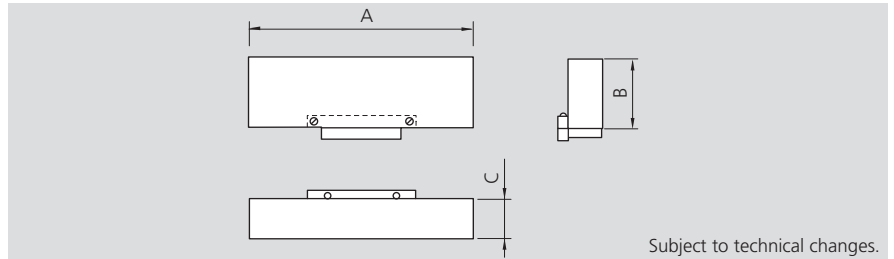
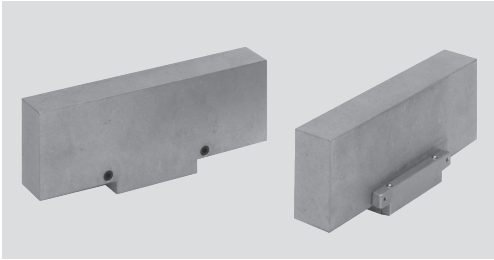


Subject to technical changes.

Type	Id. No.	A [mm]	B [mm]	C [mm]	D1		D2		D3		D4	
					min.-mm	max.-mm	min.-mm	max.-mm	min.-mm	max.-mm	min.-mm	max.-mm
TCi 110	58019409	106	40	30	3	6.5	6.5	15	15	35	7	16
TCi 150 / MCi 150	58029409	146	50	30	3	6.5	6.5	15	15	35	7	16
TCi 200 / MCi 200	58039409	196	70	50	6	13	13	30	30	70	15	35

- Aluminium and steel soft jaws
- Suitable for TCI and MCI vices

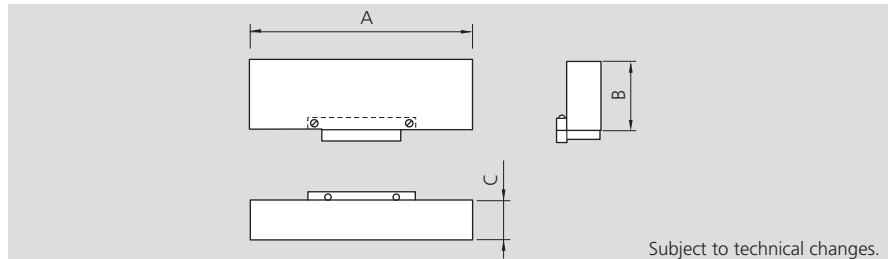
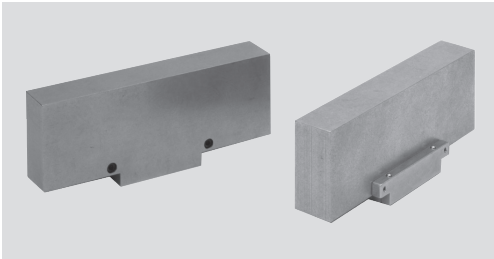
### Aluminium jaws (1 pair)



Subject to technical changes.

Type	Id. No.	A [mm]	B [mm]	C [mm]
TCi 110	58019509	106	40	19
TCi 150 / MCI 150	58029509	146	50	24
TCi 200 / MCI 200	58039509	196	70	34

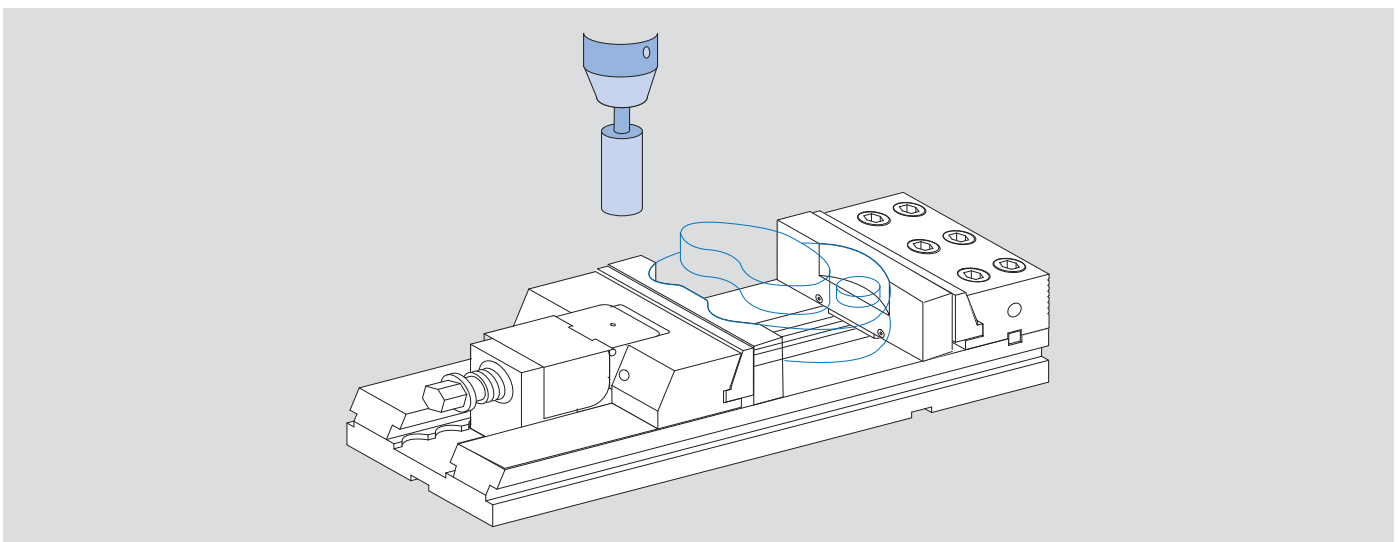
### Steel soft jaws (1 pair)



Subject to technical changes.

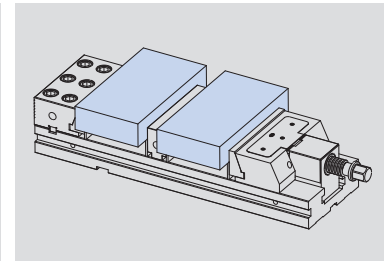
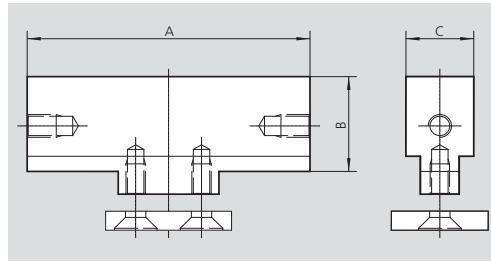
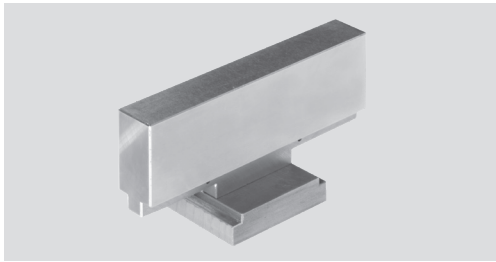
Type	Id. No.	A [mm]	B [mm]	C [mm]
TCi 110	58019609	106	40	19
TCi 150 / MCI 150	58029609	146	50	24
TCi 200 / MCI 200	58039609	196	70	34

### Application examples



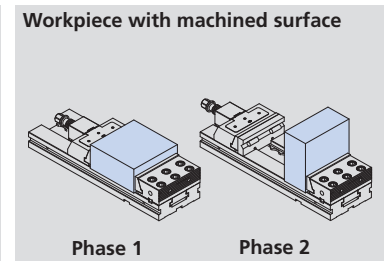
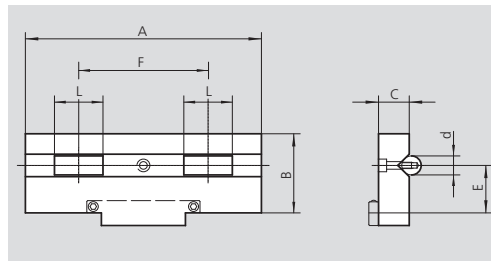
- Jaws CLAK-System
- Suitable for TCi and MCI vices

## Middle jaw CLAK-System



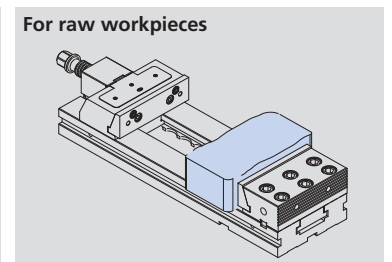
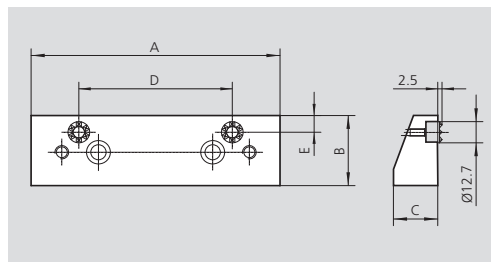
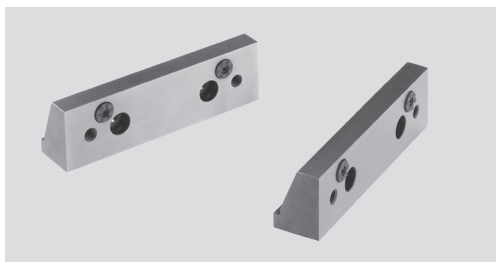
Type	Id. No.	A [mm]	B [mm]	C [mm]
TCi 110	58014109	106	40	32
TCi 150 / MCI 150	58024109	146	50	32
TCi 200 / MCI 200	58034109	196	70	48

## Jaw with rolls



Type	Id. No.	A [mm]	B [mm]	C [mm]	d [mm]	E [mm]	F [mm]	L [mm]
TCi 110	58019709	106	40	19	12	25	60	30
TCi 150 / MCI 150	58029709	146	50	19	12	30	80	30
TCi 200 / MCI 200	58039709	196	70	28	16	40	110	40

## Jaws (1 pair) with grippers UGE



Type	Id. No.	A [mm]	B [mm]	C [mm]	D [mm]	E [mm]
TCi 150 / MCI 150	58024509	146	42	26	90	10
TCi 200 / MCI 200	58034509	196	60	31	160	12