

- Serration 2.5 x 60°
- Quick change system „CLAK-System“ optional available



Application/customer benefits

- Full usability of the machine table
- Modular system: Extensive range of accessories
- Quick change system „CLAK-System“ for jaws and parallel claks optional available (see page 223)
- Maximum efficiency due to quick change over
- Can be used for single or multiclamp

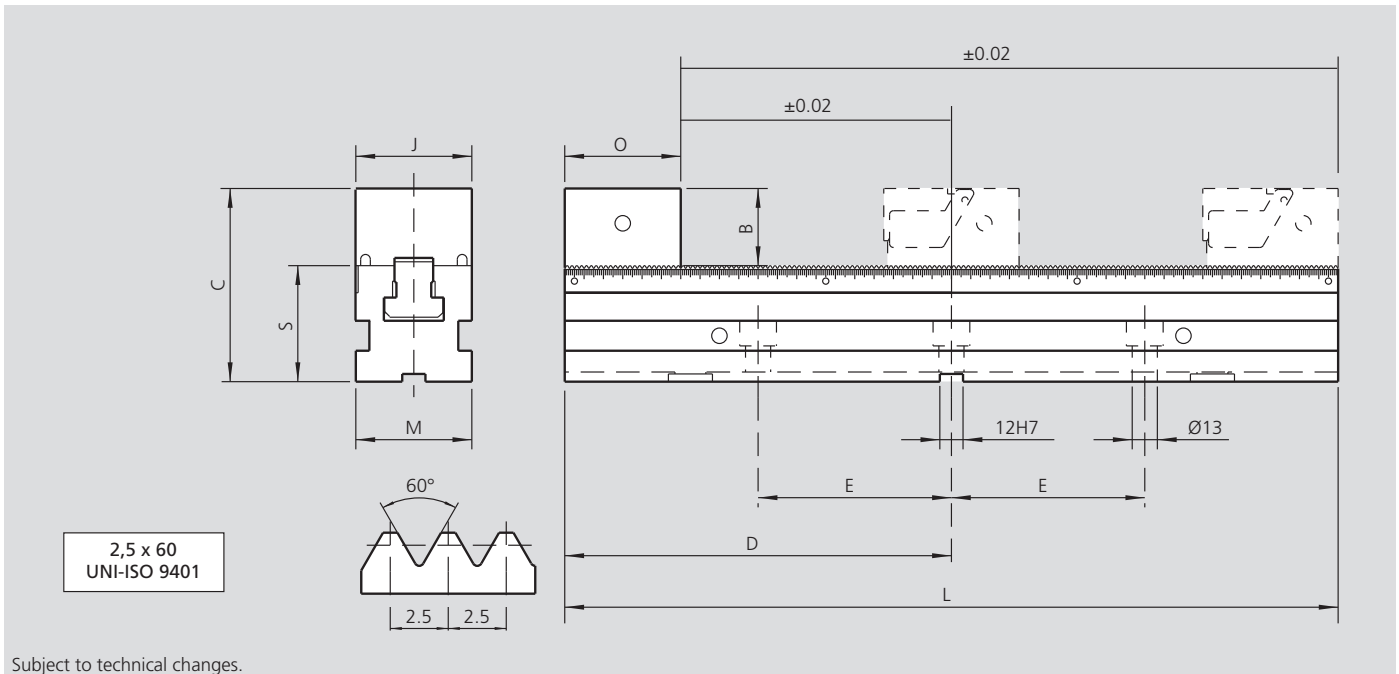
Technical features

- Serration :2.5 x 60°
- Jaw width: 38 mm, 60 mm und 90 mm, Length: 250 mm, 400 mm, 500 mm and 630 mm
- Optional: Interfaces for zero point clamping system APS / WPS / ZeroAct (on request)

Standard equipment

Multiple clamping system:
Base, fix jaw (one side smooth, one side grooved), 1 pair of 12 mm positioning keys, clamping wrench, workstop

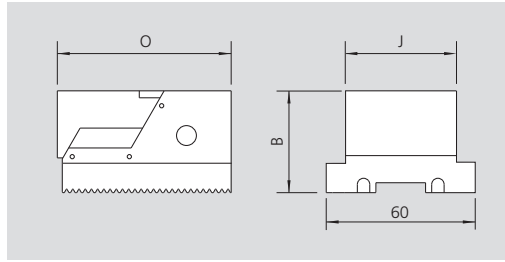
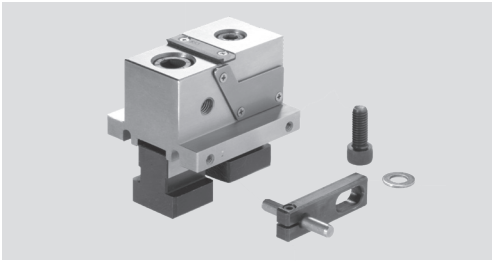
Technical data



Subject to technical changes.

Type	Id. No.	B [mm]	C [mm]	D [mm]	E [mm]	J [mm]	L [mm]	M [mm]	O [mm]	S ±0.01 [mm]	Weight [kg]
CV 38-250	77584004	40	100	125	100	38	250	60	60	60	6
CV 38-400	77584001			200	100		400				9
CV 38-500	77584002			250	150		500				11
CV 38-630	77584003			315	200		630				13
CV 60-250	77584104	40	100	125	100	60	250	60	60	60	6.5
CV 60-400	77584101			200	100		400				9.5
CV 60-500	77584102			250	150		500				11.5
CV 60-630	77584103			315	200		630				13.5
CV 90-250	77584204	45	115	125	100	90	250	90	70	70	11
CV 90-400	77584201			200	100		400				16
CV 90-500	77584202			250	150		500				19.5
CV 90-630	77584203			315	200		630				23.5

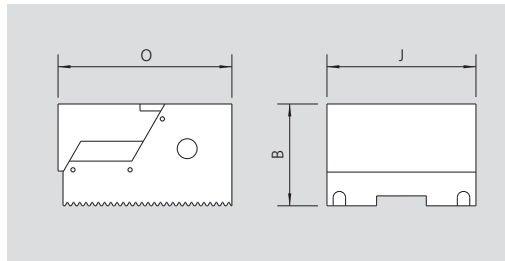
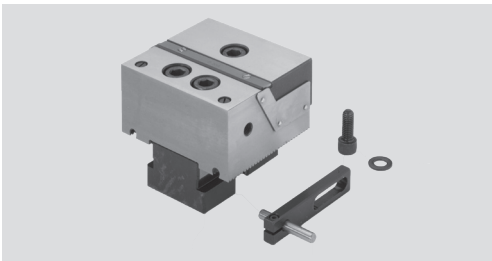
Adjustable jaws with pull down, smooth, set



Consisting of:
Adjustable jaws smooth
incl. workstop

Type	Id. No.	B [mm]	J [mm]	O [mm]	Weight [kg]
CV 38	77584023	40	38	70	1

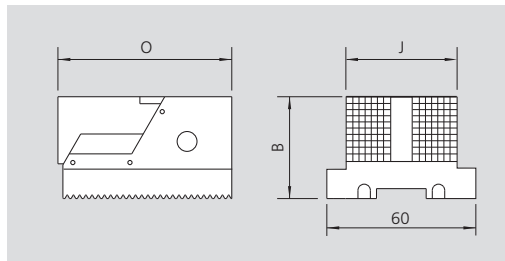
Adjustable jaws with pull down, smooth, set



Consisting of:
Adjustable jaws smooth
incl. workstop

Type	Id. No.	B [mm]	J [mm]	O [mm]	Weight [kg]
CV 60	77584123	40	60	70	1.4
CV 90	77584223	45	90	80	2.9

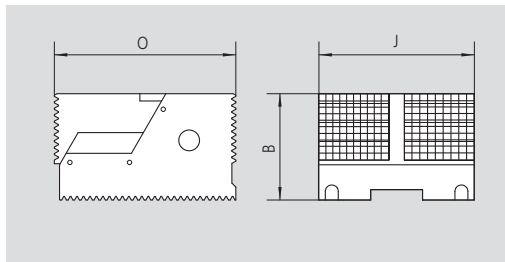
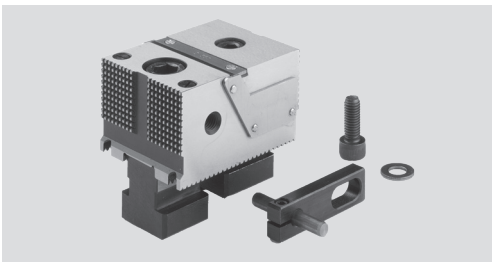
Adjustable jaws with pull down, grooved, set (for raw workpieces)



Consisting of:
Adjustable jaws grooved
incl. workstop

Type	Id. No.	B [mm]	J [mm]	O [mm]	Weight [kg]
CV 38	77584028	40	38	70	1

Adjustable jaws with pull down, grooved, set (for raw workpieces)

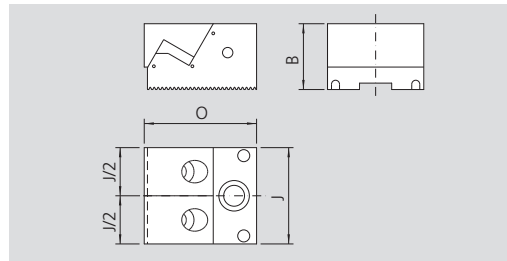
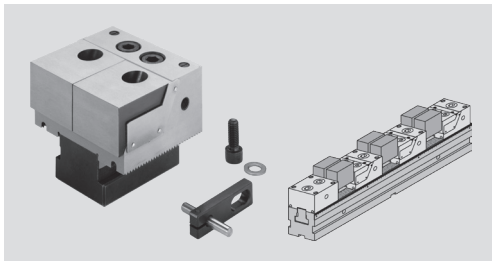


Consisting of:
Adjustable jaws grooved
incl. workstop

Type	Id. No.	B [mm]	J [mm]	O [mm]	Weight [kg]
CV 60	77584128	40	60	70	1.4
CV 90	77584228	45	90	80	2.9

Accessories

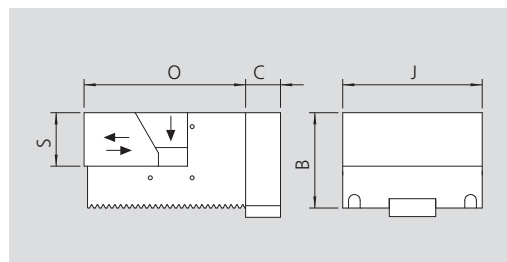
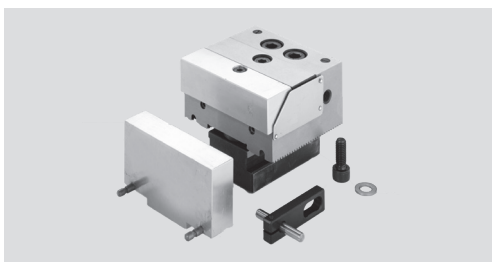
Adjustable jaws double with pull down, smooth, set



Consisting of:
Adjustable jaws double smooth incl. workstop

Type	Id. No.	B [mm]	J [mm]	O [mm]	Weight [kg]
CV 60	77584124	40	60	70	1.5
CV 90	77584224	45	90	80	3

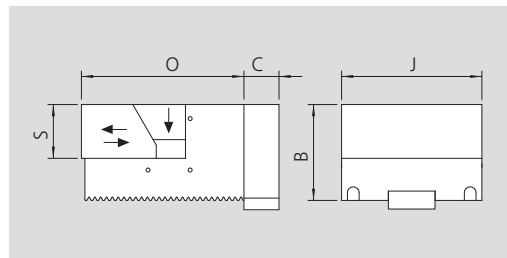
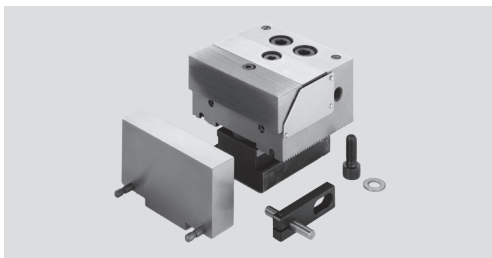
Adjustable jaws with aluminium-clamping inserts, set



Consisting of:
Adjustable jaws with aluminium-clamping inserts incl. workstop

Type	Id. No.	B [mm]	C [mm]	J [mm]	O [mm]	S [mm]	Weight [kg]
CV 60	77584145	40	15	60	69.5	23	1.2
CV 90	77584245	45	20	90	80	25	2.7

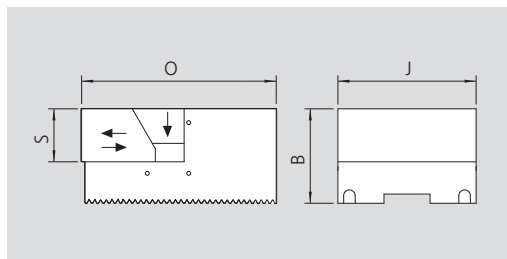
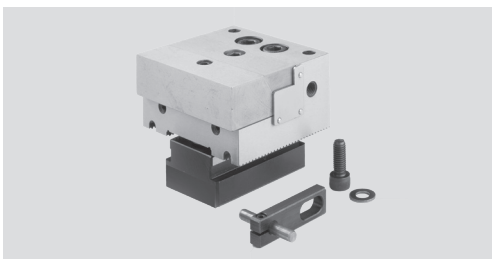
Adjustable jaws with soft steel-clamping inserts, set



Consisting of:
Adjustable jaws with soft steel-clamping inserts incl. workstop

Type	Id. No.	B [mm]	C [mm]	J [mm]	O [mm]	S [mm]	Weight [kg]
CV 60	77584146	40	15	60	69.5	23	1.4
CV 90	77584246	45	20	90	80	25	3

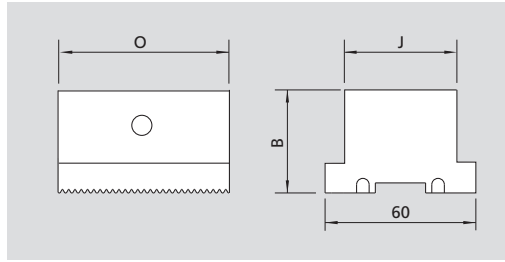
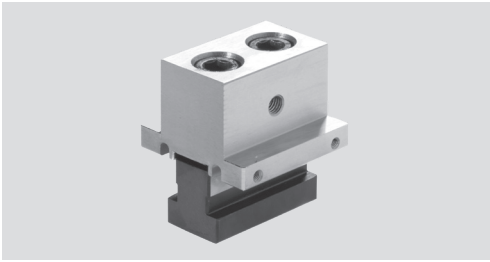
Adjustable jaws with hard steel-clamping inserts, set



Consisting of:
Adjustable jaws with hard steel-clamping inserts incl. workstop

Type	Id. No.	B [mm]	J [mm]	O [mm]	S [mm]	Weight [kg]
CV 60	77584147	40	60	69.5	23	1.4
CV 90	77584247	45	90	80	25	3

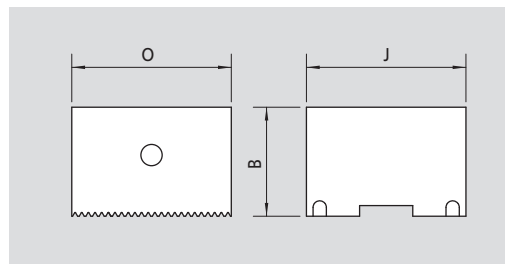
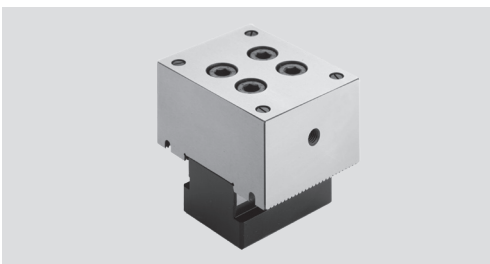
Fix jaws with T-nut, set



Consisting of:
Fix jaws with T-nuts

Type	Id. No.	B [mm]	J [mm]	O [mm]	Weight [kg]
CV 38	58407200	40	38	60	1

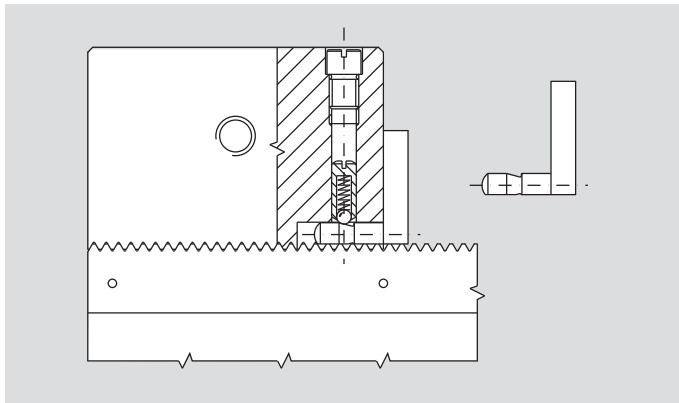
Fix jaws with T-nut, set



Consisting of:
Fix jaws with T-nuts

Type	Id. No.	B [mm]	J [mm]	O [mm]	Weight [kg]
CV 60	58417200	40	60	60	1.4
CV 90	58427200	45	90	70	2.9

CLAK-System: Quick change for multiple clamping system CV



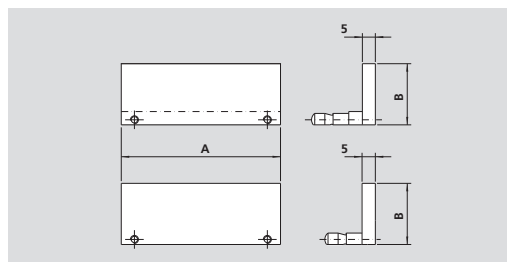
The exclusive and proven CLAK-System, for the quick change of parallels and jaws has been applied for use with the CV. The CLAK-System ensures highest repeatability and minimum set-up times.

This equipment offers:

- The quick change of parallels and jaws
- The elimination of clamps and locks thanks to the patented selflocking system
- The increase in accuracy

All components are heat treated and precision ground.

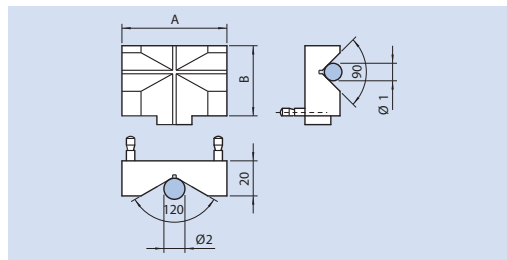
Parallels with quick change „CLAK-System“, set



Consisting of:
4 pairs of parallels with quick change „CLAK-System“

Type	Id. No.	A [mm]	B [mm]				Weight [kg]
CV 38	58409204	38	18	23	28	37	0.4
CV 60	58419204	60	18	23	28	37	0.49
CV 90	58429204	90	18	23	33	42	0.77

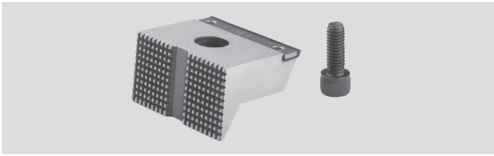
Prism jaw with quick change „CLAK-System“



Consisting of:
Prism jaw with quick change „CLAK-System“

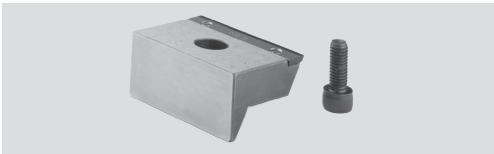
Type	Id. No.	A [mm]	B [mm]	Ø 1		Ø 2	
				min. [mm]	max. [mm]	min. [mm]	max. [mm]
CV 38	58409400	38	40	10	24	9	45
CV 60	58419400	60	40	10	28	11	70
CV 90	58429400	90	45	10	28	11	70

Clamping insert, hard, serrated



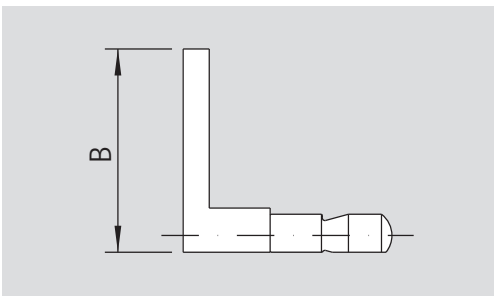
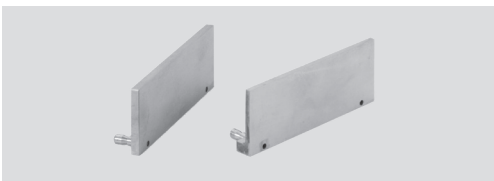
Type	Id. No.
CV 38	58404419
CV 60	58414419
CV 90	58424419

Clamping insert, hard, smooth



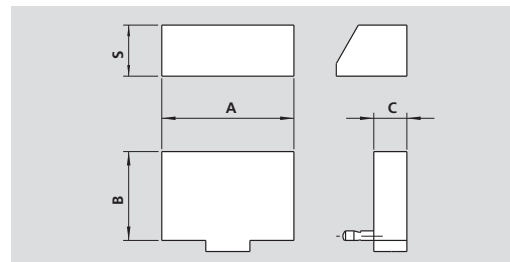
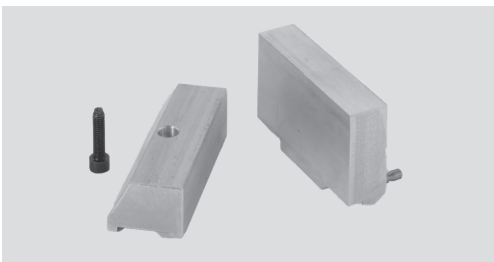
Type	Id. No.
CV 38	58400409
CV 60	58410409
CV 90	58420409

Pair of parallels, with quick change „CLAK-System“



Type	Id. No.	B [mm]
CV 38	58403518	18
CV 38	58403523	23
CV 38	58403528	28
CV 38	58403537	37
CV 60	58413518	18
CV 60	58413523	23
CV 60	58413528	28
CV 60	58413535	35
CV 60	58413537	37
CV 90	58423518	18
CV 90	58423523	23
CV 90	58423533	33
CV 90	58423540	40
CV 90	58423542	42

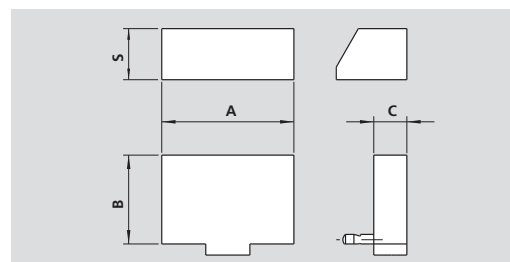
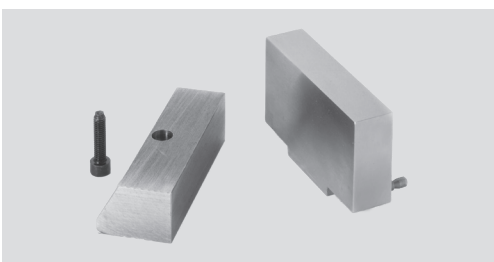
Pair of parallels, soft, aluminium, with quick change „CLAK-System“



Consisting of:
Pair of soft clamping inserts in aluminium, with jaw quick change „CLAK-System“

Type	Id. No.	A [mm]	B [mm]	C [mm]	S [mm]	Weight [kg]
CV 60	58419549	60	40	15	23	0.19
CV 90	58429549	90	45	20	25	0.4

Pair of clamping inserts, soft, steel, with quick change „CLAK-System“

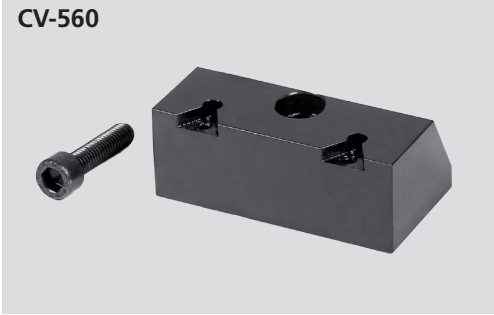


Consisting of:
Pair of soft clamping inserts in steel, with jaw quick change „CLAK-System“

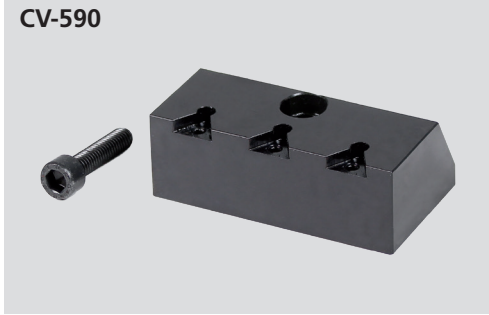
Type	Id. No.	A [mm]	B [mm]	C [mm]	S [mm]	Weight [kg]
CV 60	58419649	60	40	15	23	0.58
CV 90	58429649	90	45	20	25	1.2

SinterGrip clamping jaw

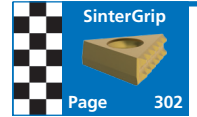
CV-560



CV-590

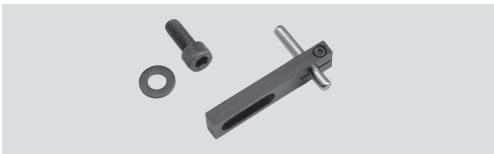


Consisting of:
Jaw and mounting screw,
without SinterGrip inserts



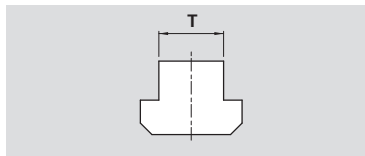
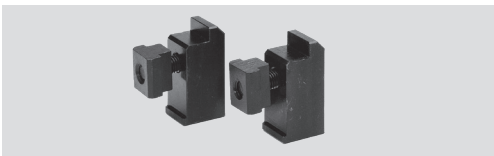
Type	Id. No.
CV-S 60	58460469
CV-S 90	58460499

Workstop



Type	Id. No.
CV 38 / 60	58315010 for fixed support
CV 90	58325010 for fixed support
CV 38 / 60 / 90	58315020 for movable support

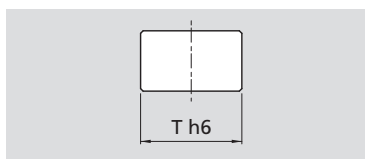
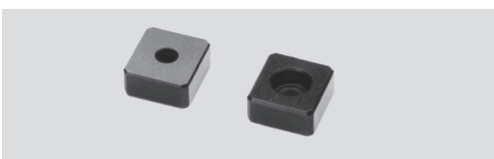
Pair of clamps



Consisting of:
Pair of clamps
complete with screw and T-nut

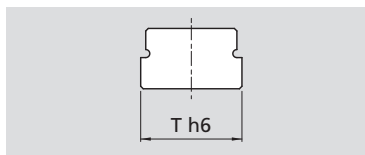
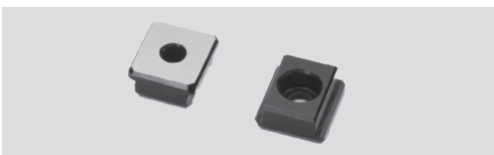
Type	Id. No.						
	T	12 mm	14 mm	16 mm	18 mm	20 mm	22 mm
CV 38 / 60		58012792	58012793	58012794	58012795	58012796	58012797
CV 90		58022792	58022793	58022794	58022795	58022796	58022797

Pair of standard positioning keys



Type	Id. No.	T h6 mm
CV 38 / 60 / 90	58011592	12

Pair of special positioning keys with special dimensions



Type	Id. No.						
	Th6	12 mm - h6	14 mm - h6	16 mm - h6	18 mm - h6	20 mm - h6	22 mm - h6
CV 38 / 60 / 90		-	58011593	58011594	58011595	58011596	58011597