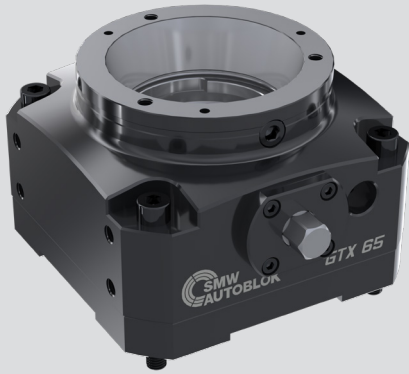


- For standard collets
- Manual actuated



Application/customer benefits

- Highest clamping forces and rigidity for best machining quality
- Maximum economy due to quick change of collets and fast mounting
- High flexibility due to the use of standard collets
- Ideal for 5-axis machining due to the compact design
- Sensitive adjustment of the clamping force

Technical features

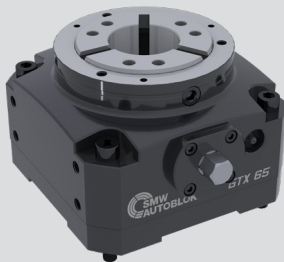
- Manual actuated by fast clamping function (clamping wrench SW 12)
- Repeatability ≤ 0.01 mm
- Pull-down effect
- Workpiece stop optional
- Horizontal or vertical mounting
- Threads for mounting a front stop

Standard equipment

Stationary chuck with clamping wrench

Application Examples

Stationary chuck GTX with standard collet for O.D. Clamping



Clamping with standard collet



Stationary chuck GTX with premium adapter PA for O.D. Clamping



Clamping with slotted high-precision collet



Stationary chuck GTX with extension mandrel EMX-F-CO „Connect“ for I.D. Clamping



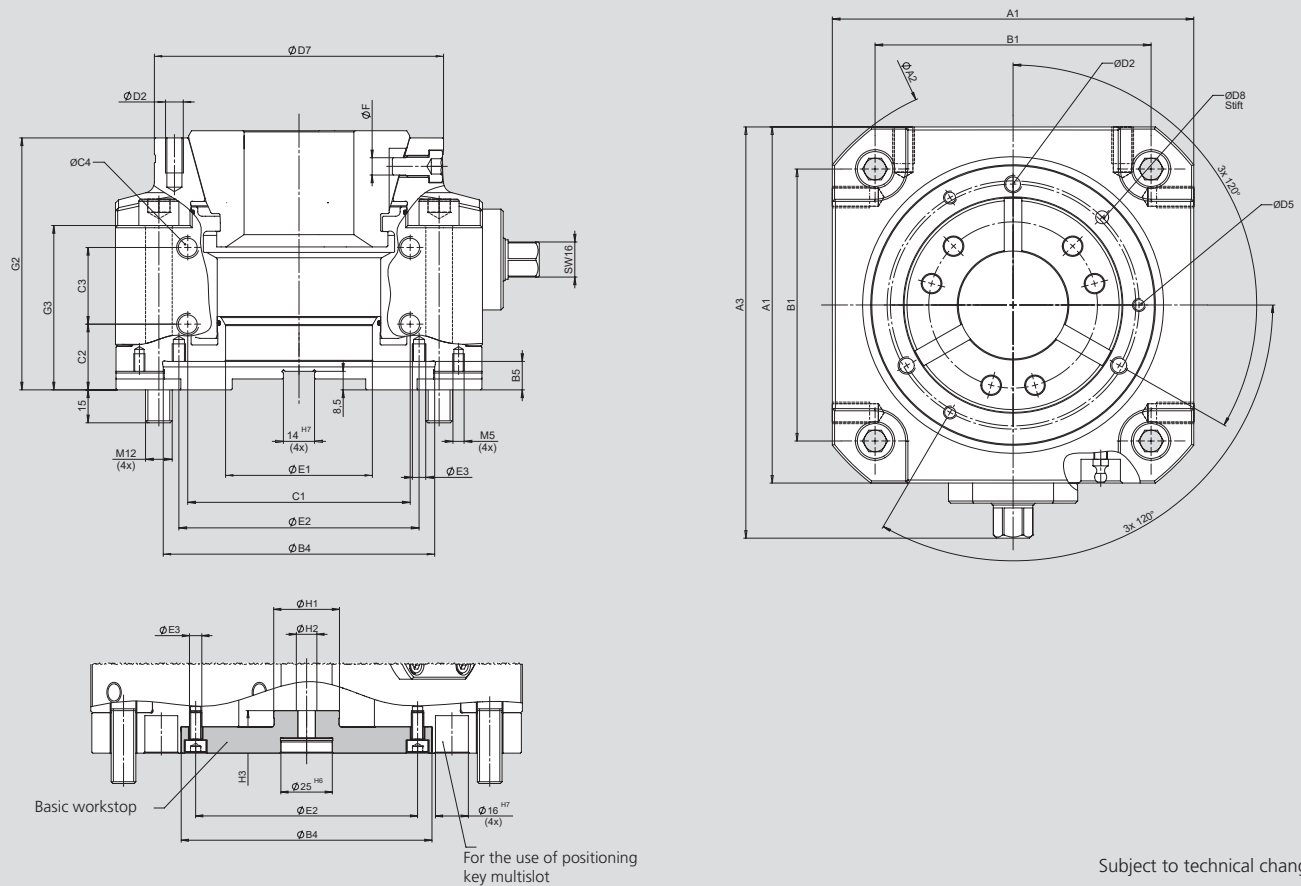
Clamping with extension mandrel „Connect“



Stationary chuck

GTX

- For standard collets
- Manual actuated



Subject to technical changes.
Collet not included

SMW-AUTOBLOK Type		GTX - 42	GTX - 65	GTX - 100
Id-No. GTX		9800210000	9800410000	9800610000
Id-No. Basic workstop GTX		9800210011	9800410011	9800610011
A1	mm	165	165	240
A2	mm	210	210	310
A3	mm	190.5	190,5	265,7
B1	mm	126	126	200
B4	+0,015 mm	122	122	190
B5	mm	13	13	15
C1	mm	100	100	150
C2	mm	30	30	37
C3	mm	35	35	30
C4	Thread / Depth	3 x 4 M10 / 17	M10 / 17	M10 / 18
D2	Thread / Depth / Pitch circle	3 x 120° M8 / 16 / 93	M8 / 16 / 112	M8 / 18 / 162
D5	Thread / Depth / Pitch circle	3 x 120° M6 / 12 / 95	M6 / 12 / 115	M8 / 18 / 162
D7	f7 mm	110	130	180
D8	Diameter / Depth / Pitch circle	1x Ø6 / 10 / 95	Ø6 / 10 / 115	Ø6 / 10 / 162
E1	mm	43	66	102
E2	Basic workstop mm	108	108	165
E3	Basic workstop / thread / depth	8 x 45° M6 / 8	M6 / 8	M6 / 10
F	mm	5,8	7,9	7,8
G2	mm	115	115	138
G3	mm	75	75	80
H1	f7 mm	25	32	45
H2	1x mm	M10	M10	M12
H3	mm	21	21	25
Axial stroke	mm	5,5	5,5	8
Loading clearance in Ø	mm	1	1	2
Reserve stroke in Ø	mm	1	1	1,5
Max. Actuating torque	Nm	120	140	140
Max. Clamping force radial	kN	80	105	150
Weight without collets	kg	15,6	14,5	35,4