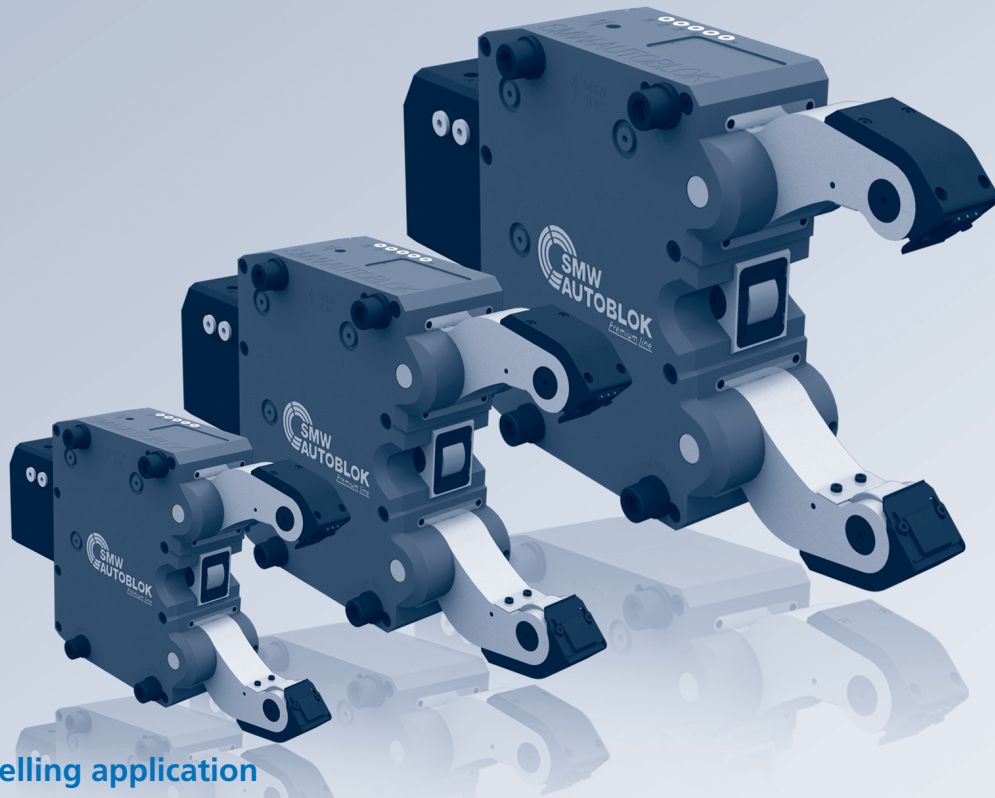
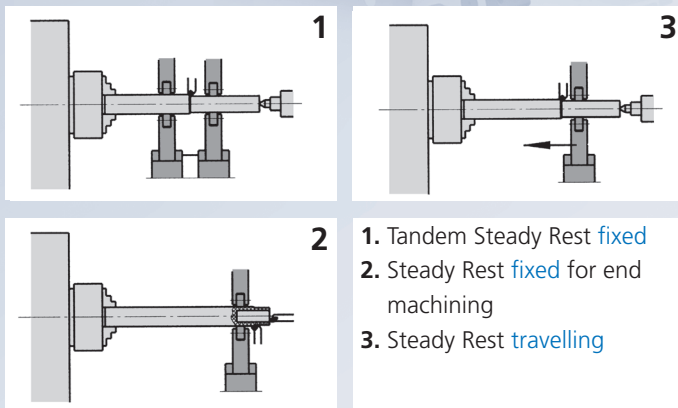


# SMW-AUTOBLOK

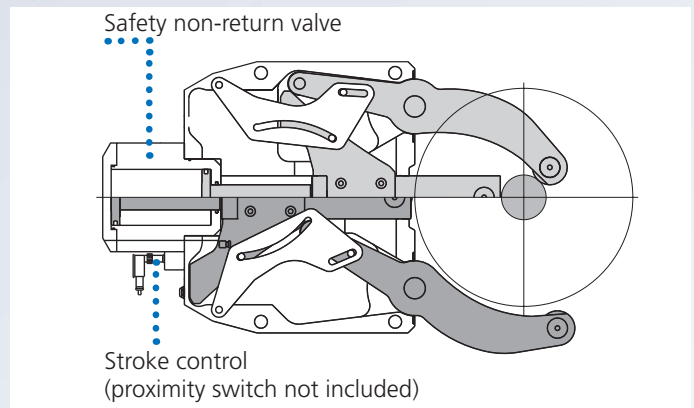
## worldwide leader in Steady Rests



### Fixed or travelling application



1. Tandem Steady Rest **fixed**
2. Steady Rest **fixed** for end machining
3. Steady Rest **travelling**

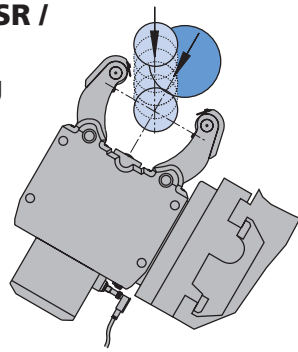


## Features included in standard range

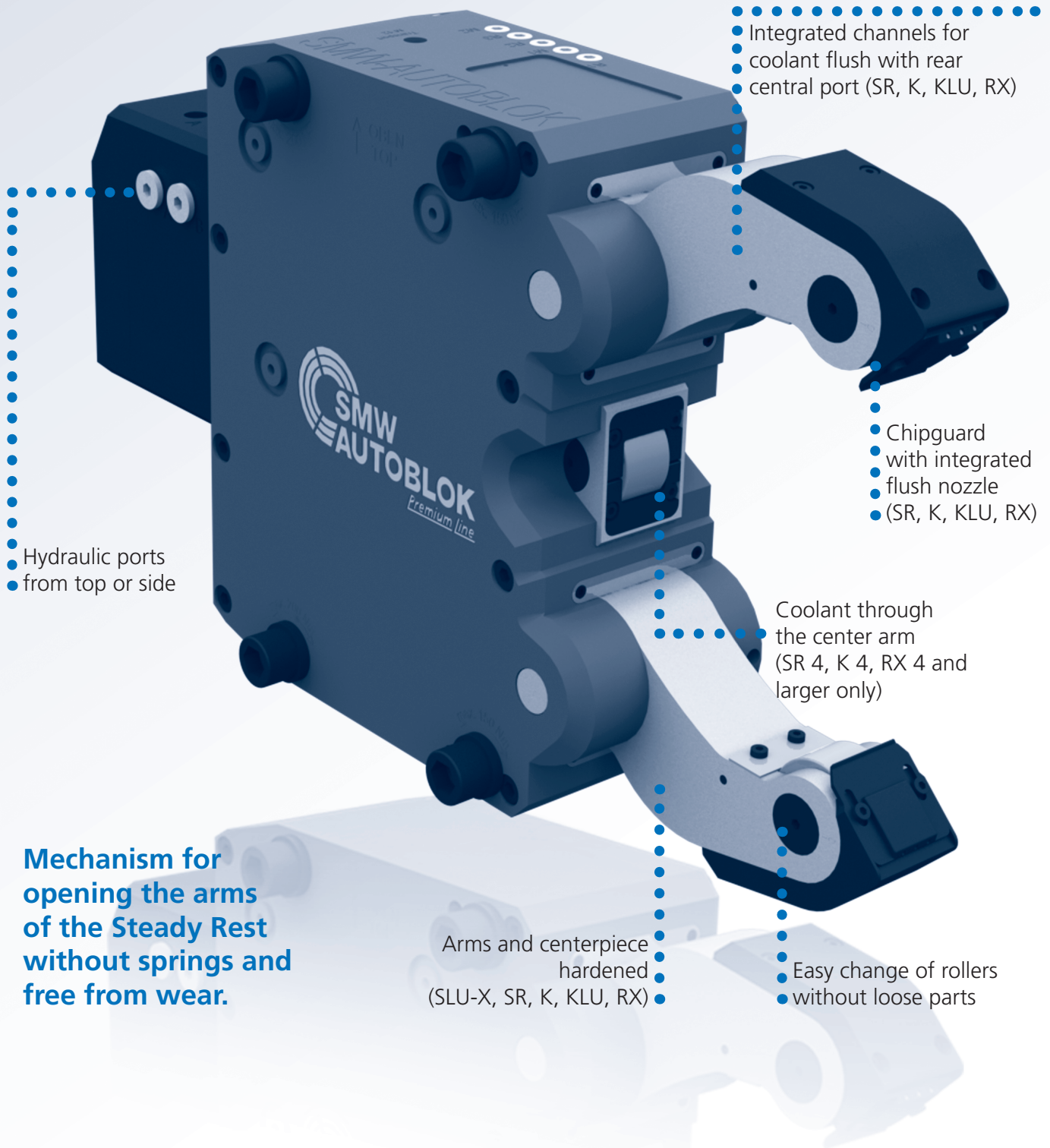
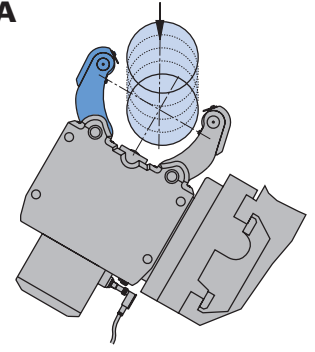
Steady Rest Type	Standard Line		Basic Line	Premium Line					
	SLU-X	SLUB, SLUB-A		SR	SRA	SR-CL	K, KA	KLU, KLU-A	RX
<b>Steady Rest Size</b>	1 - 5.1	3 - 6	1 - 6	2 - 6	2 - 6	4 - 6	3 - 7.1	215 - 540	2 - 6.1
Sealed body	■	■	■	■	■	■	■	■	■
Safety valve	■	■	■	■	■	■	■	■	■
Stroke control (proximity switch not included)	■	■	■	■	■	■	■	■	■
1 set swarf guard 3-piece	■	■	■						
1 set swarf guard with integrated coolant flush				■	■	■	■	■	■
1 set cylindrical rollers	■	■	■	■	■	■	■	■	■
Port for compressed air	■	■	■	■	■	■	■	■	■
Port for coolant through arms incl. chipguard				■	■	■	■	■	■
Toolbox	■	■		■	■	■	■	■	■

# SLU-X® · SR® · K · KLU · RX

**SLU-X / SLU / SR /  
K / KLU / RX**  
large clamping  
range



**SLU-A / SRA / KLU-A / KA**  
additional pivoting  
upper arm  
for automatic vertical  
loading



- Integrated channels for coolant flush with rear central port (SR, K, KLU, RX)

- Hydraulic ports from top or side

- Chipguard with integrated flush nozzle (SR, K, KLU, RX)

- Coolant through the center arm (SR 4, K 4, RX 4 and larger only)

**Mechanism for opening the arms of the Steady Rest without springs and free from wear.**

- Arms and centerpiece hardened (SLU-X, SR, K, KLU, RX)

- Easy change of rollers without loose parts

**SLU-X<sup>®</sup>**  
**SLUB / -A**

**SLU**  
**SLU-A**

**SR<sup>®</sup> / -CL**  
**SRA**

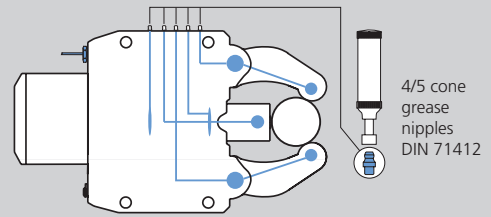
**KLU / -A**  
**K / KA**

**RX**

### Option of manual lubrication (M) (all types)

- Low cost solution for medium working conditions and low build up of swarf.
- The lubrication points and rollers are supplied with lubrication grease via the grease nipples and the grease gun.
- Lubrication intervals depending on the working conditions normally every 4 to 8 operating hours.
- Grease: KPE 2R-20 DIN 51502.

### Manual lubrication (M)



### Option of central oil lubrication (Z) (all types)

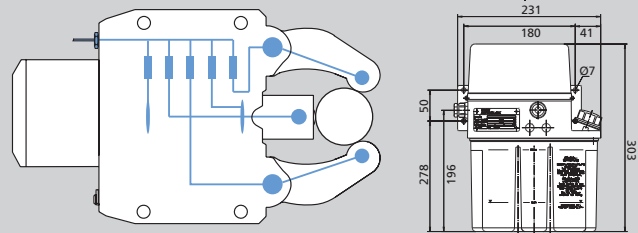
- For heavy working conditions and high build up of swarf.
- For travelling Steady Rest applications.
- The use of our separate complete lubrication unit with timer control is recommended.
- Lubricating intervals 5 - 20 min.
- Min. / max. operating pressure 10 / 45 bar.
- Oil: Viscosity of 46 mm<sup>2</sup> / s (viscosity class ISO).

### Central lubrication oil (Z)

Centralized lubrication G 1/8"

### Lubrication unit oil

Id. No. 088707



### Option of central lubrication oil + air (OLD) (all types)

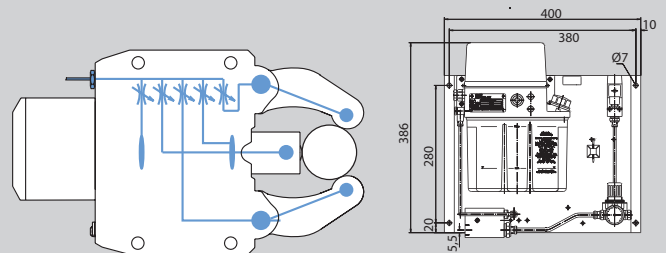
- For heaviest cutting conditions with high built up of swarf, dust or coolant.
- The SMW-AUTOBLOK oil + air unit for lubrication with built-in timer control is mandatory.
- This unit injects oil for lubrication into the air hose in adjustable intervals ( 1 - 4 min.).
- The permanent air flow (min. 3 bar) feeds the oil to the rollers and keeps them clean.
- Oil: Viscosity of 46 mm<sup>2</sup> / s (viscosity class ISO).

### Oil + air lubrication (OLD)

Centralized lubrication G 1/8"

### Lubrication unit oil + air

Id. No. 088708

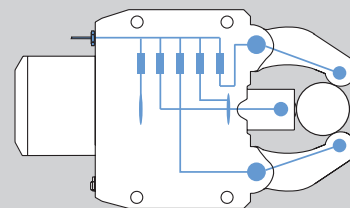


### Option of central grease lubrication (F) (not SLU / SLU-A / SLUB / SLUB-A)

- For machines with central grease lubrication.
- For application and intervals please follow the instruction of the machine maker.
- Min. / max. operating pressure 30 / 45 bar.
- Grease: NLGI class 0 or 1.

### Central grease lubrication (F)

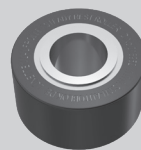
Centralized lubrication G 1/8"



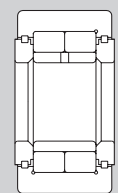
### Option of rollers (all types)

- SMW-AUTOBLOK rollers (precision class P05) specially developed for our Steady Rests.
- Special sealing ensures highest precision and service life.
- Standard equipment: 1 set of cylindrical rollers.
- Option: Spherical rollers (for travelling Steady Rests), synthetic material rollers, carbide rollers.

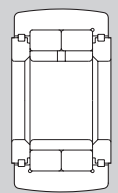
### Original SMW-AUTOBLOK roller



### cylindrical



### spherical



### narrow



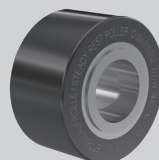
### Rollers (all types)

- Rollers steel (standard): Surface of workpiece not hardened.

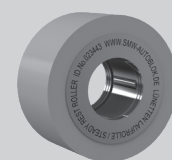
### Available optional materials:

- Rollers synthetic material: Surface of workpiece polished or chrome plated.
- Rollers carbide: Surface of workpiece hardened.

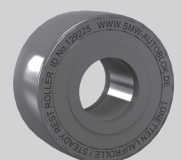
### Rollers steel



### Rollers synthetic material



### Rollers carbide



**SLU-X<sup>®</sup>**  
**SLUB / -A**

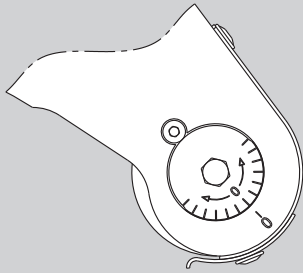
**SLU**  
**SLU-A**

**SR<sup>®</sup> / -CL**  
**SRA**

**KLU / -A**  
**K / KA**

**RX**

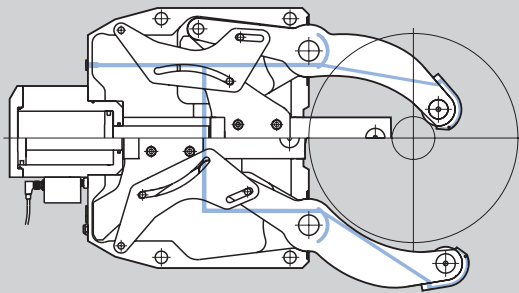
### Eccentric fine adjustment



### Option fine adjustment of center line (all types)

- Eccentric roller pins on the two Steady Rest arms allow a quick fine adjustment of the center line.
- Therefore no need to unlock and adjust the entire Steady Rest on the bracket for small adjusting movements.
- Adjustment of open Steady Rest only!

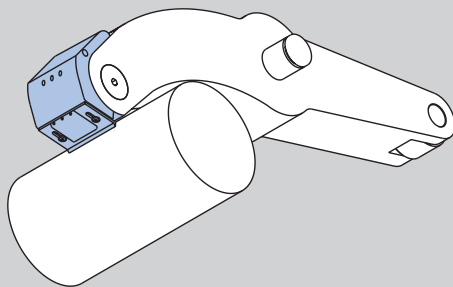
### Coolant / air feed



### Coolant / air feed (SR / K / KLU / RX only)

- Built-in channels to feed coolant or air from a central connecting port to the Steady Rest arms.
- Basic equipment for SR / K / KLU / RX Steady Rests.
- From size SR-4 / K4 and larger with coolant through the center arm.

### Chipguard coolant / air



### Patented coolant / air chipguard with integrated flush nozzles (SR / K / KLU / RX only)

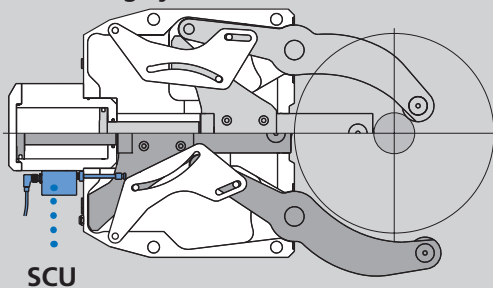
- Keeps roller clamping area free from chips.
- The patented double flush nozzles keep front and rear of the wiper area clean.

### Only for Steady Rests with coolant / air feed

#### Benefit:

- Constant centering accuracy.
- No damage of workpiece and rollers caused by chips / swarf.
- Less roller consumption = less costs.

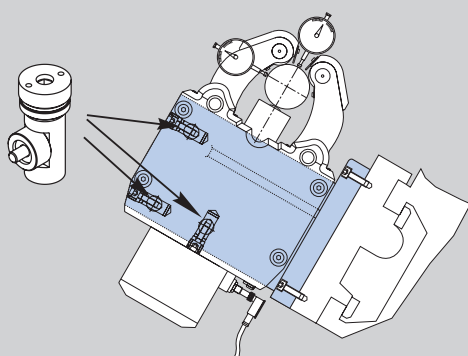
### SCU diameter measuring system



### Option linear diameter measuring system SCU (not SLU, SLUB, SLU-A, SLUB-A)

- The position of the clamping arms is monitored by the linear measuring system SCU.
- Avoids collision with workpieces, turret, loader etc.
- Reduced cycle time due to position controlled opening of the arms to the requested opening only.
- Power supply SCU: In: 24 V Out: 4 - 20 mA

### Steady Rest bracket with adjustment device

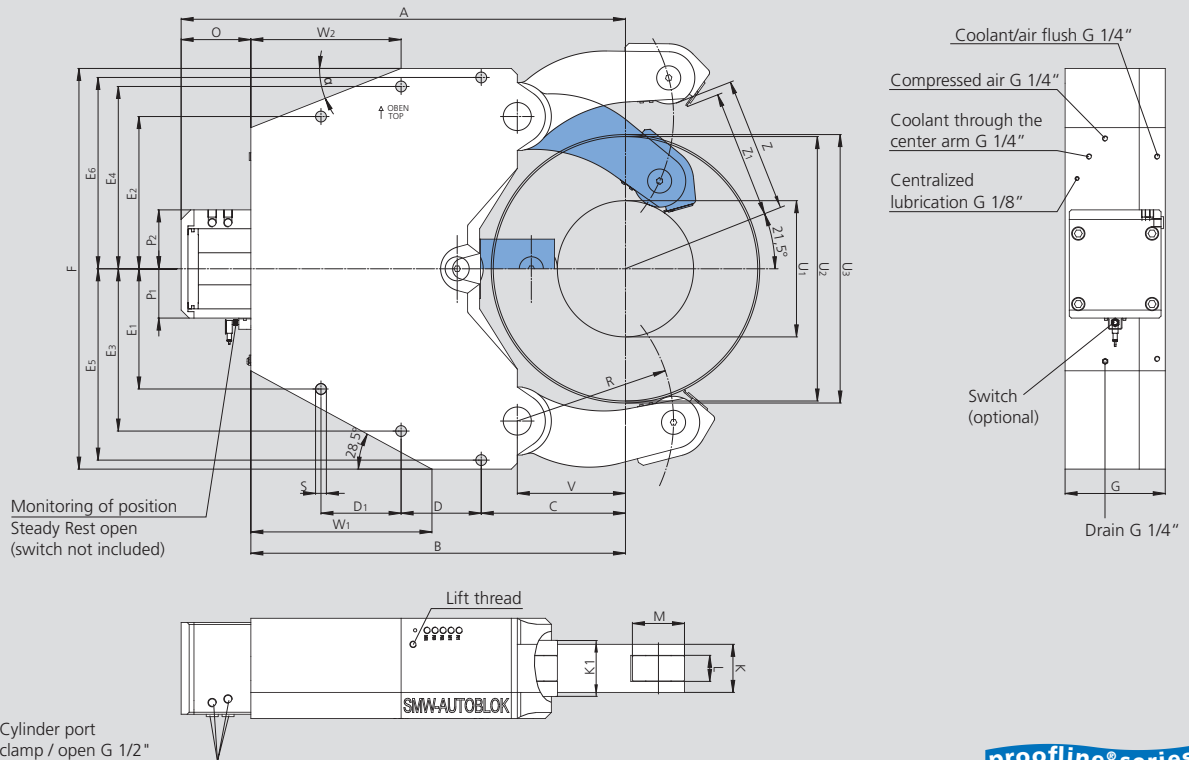


### Steady Rest bracket

- A suitable bracket is very important for the function / precision of the Steady Rest.
- Fast and easy adjustment can be done with the SMW-AUTOBLOK **adjustment device** integrated into the bracket.
- SMW-AUTOBLOK supplies the correct bracket for all applications as a turnkey solution.



- Chip guard with coolant nozzles
- Double guided center arm to carry heavy loads
- Excenter fine adjustment on the outer arms
- proofline® = fully sealed - low maintenance



Subject to technical changes.  
For more detailed information please ask our customer service.

**proofline® series**  
fully sealed – low maintenance

SMW-AUTOBLOK Type		KA 7	KA 7.1
Centering range with coolant chip guard	U1	340	650
	U2	660	910
Max. axial clearing diameter	U3	670	916
Vertical loading without chip guard	Z	347.6	472
Vertical loading with chip guard	Z1	330.7	456
	A	1109	1165
	B	935	1015
	C	360	450
	D	210	220
	D1	210	220
	E1	300	240
	E2	380	320
	E3	405	365
	E4	455	415
	E5	477.5	477.5
	E6	477.5	477.5
	F	1000	1000
	G	250	250
Width of outer arms	K	120	120
Width of center arm	K1	140	140
Width of rollers	L	65	65
Diameter of rollers	M	130	130
	O	174	150
	P1	123	123
	P2	147	147
	R	390	530
	S	27	27
	V	270	390
	W1	452	522
	W2	375	485
	$\alpha$	21.5°	22°
Piston area	cm <sup>2</sup>	314	314
Operating pressure max.	bar	80	80
Max. clamping force / roller	daN	8500	8500
Centering accuracy within the whole range	mm	0.08	0.08
Repeatability accuracy	mm	0.03	0.03
Max. roller surface speed	m/min	560	560
Weight approx.	kg	975	896









- Ordering review
- Accessories
- Wearing parts

## KA Steady Rest with stroke control Steady Rest open via proximity switch (without proximity switch)\*\*\*

Steady Rest size		KA 7	KA 7.1
KA-M Manual lubrication	Id. No.	222901	222951
KA-Z Central lubrication oil	Id. No.	222900	222950
KA-OLD Central lubrication oil + air	Id. No.	222902	222952
KA-F Central grease lubrication	Id. No.	222903	222953

## Type KA

◆ means wearing parts, recommended stock items

Steady Rest size		KA 7	KA 7.1
Compact lubrication system for oil pressure lubrication Container 2.7 l, 220 V *,**		088707	088707
Compact lubrication system for oil + air lubrication Container 2.7 l, 220 V *,**		088708	088708
Inductive limit switch		087926	087926
Swarf guard coolant / air with wiper		222944	222944
Wiper for swarf guard coolant / air	 ◆	222994	222994
Roller stripper for middle piece	 ◆	202358	202358
Rollers cylindrical design	 ◆	028525	028525
Adjustment device 1 set = 3 pcs.		205696	205696

\* When placing an order, please advise voltage.

\*\* On request 110 V available.

\*\*\* Stroke control open / closed on request.