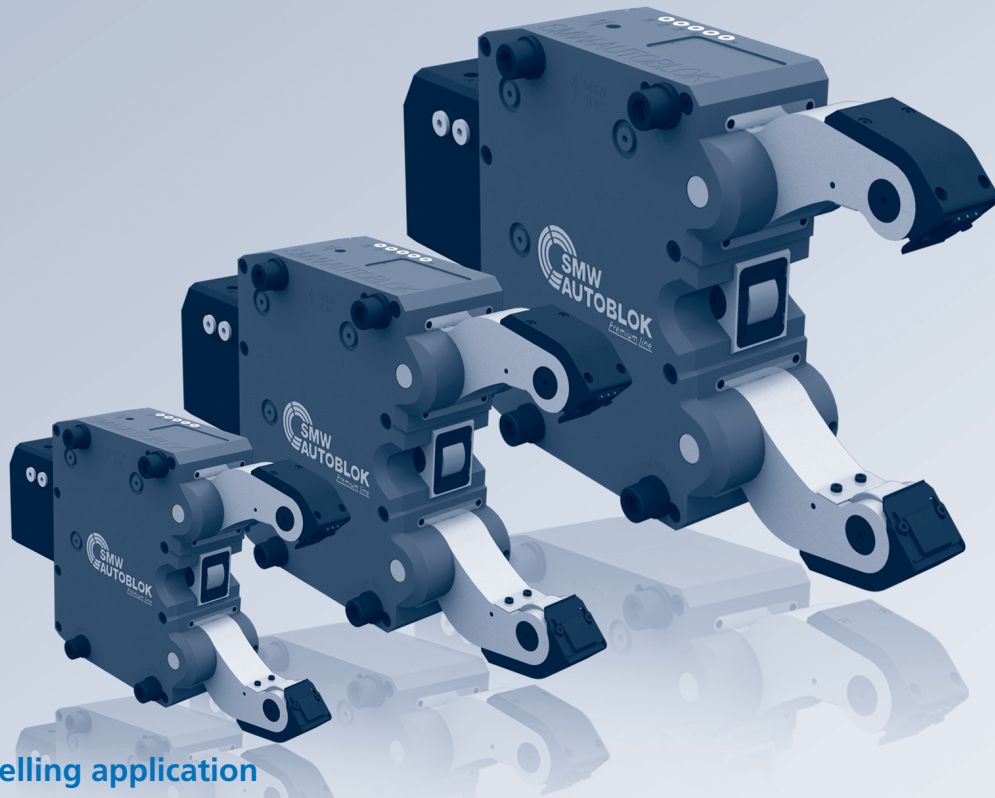


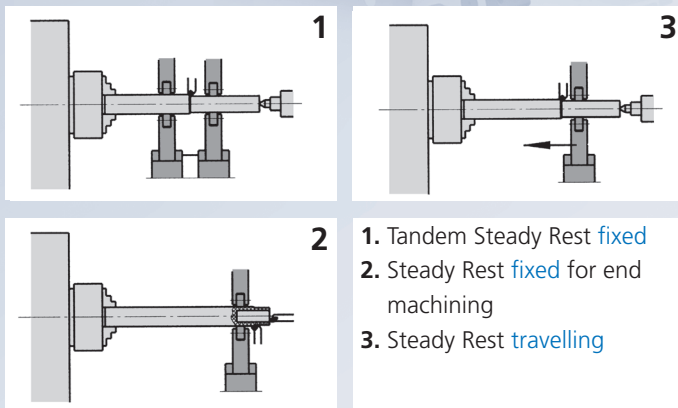
SMW-AUTOBLOK

worldwide leader

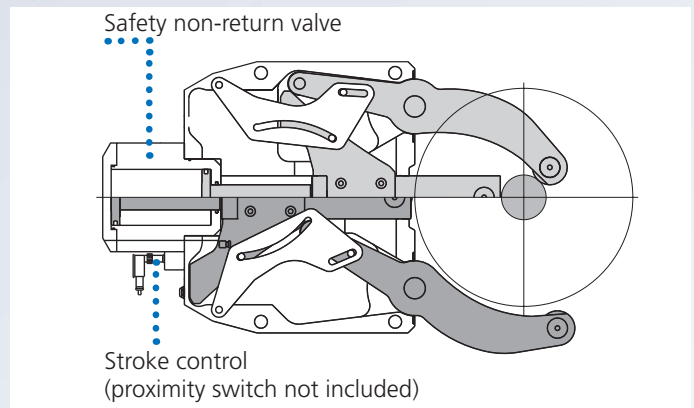
in Steady Rests



Fixed or travelling application



1. Tandem Steady Rest **fixed**
2. Steady Rest **fixed** for end machining
3. Steady Rest **travelling**

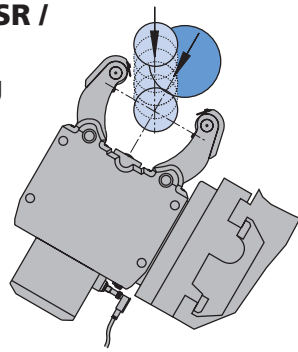


Features included in standard range

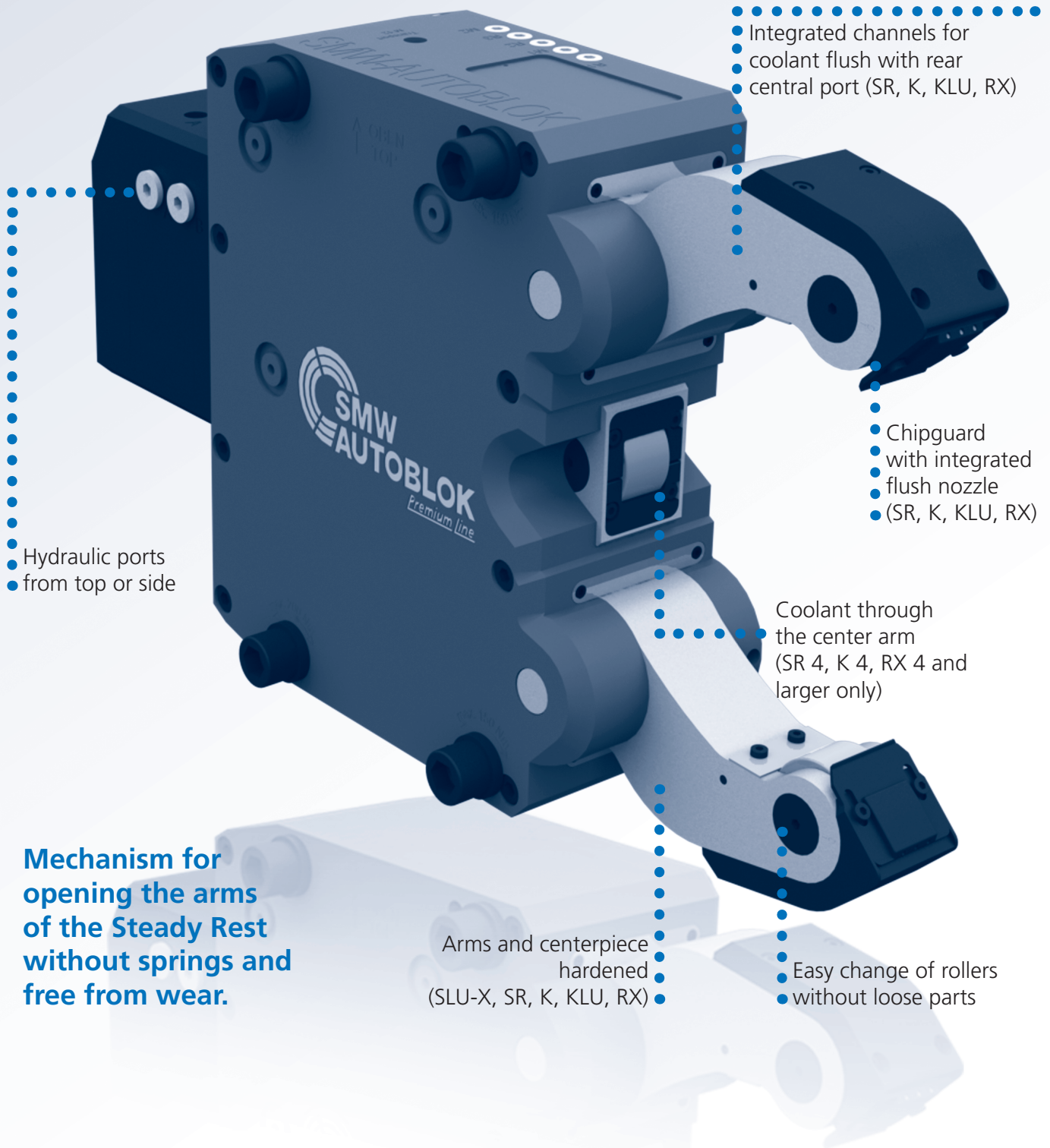
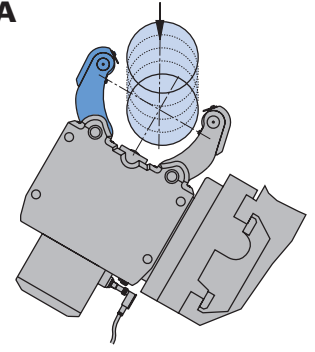
Steady Rest Type	Standard Line		Basic Line	Premium Line					
	SLU-X	SLUB, SLUB-A		SR	SRA	SR-CL	K, KA	KLU, KLU-A	RX
Steady Rest Size	1 - 5.1	3 - 6	1 - 6	2 - 6	2 - 6	4 - 6	3 - 7.1	215 - 540	2 - 6.1
Sealed body	■	■	■	■	■	■	■	■	■
Safety valve	■	■	■	■	■	■	■	■	■
Stroke control (proximity switch not included)	■	■	■	■	■	■	■	■	■
1 set swarf guard 3-piece	■	■	■						
1 set swarf guard with integrated coolant flush				■	■	■	■	■	■
1 set cylindrical rollers	■	■	■	■	■	■	■	■	■
Port for compressed air	■	■	■	■	■	■	■	■	■
Port for coolant through arms incl. chipguard				■	■	■	■	■	■
Toolbox	■	■		■	■	■	■	■	■

SLU-X® · SR® · K · KLU · RX

**SLU-X / SLU / SR /
K / KLU / RX**
large clamping
range



SLU-A / SRA / KLU-A / KA
additional pivoting
upper arm
for automatic vertical
loading



- Integrated channels for coolant flush with rear central port (SR, K, KLU, RX)

- Hydraulic ports from top or side

- Chipguard with integrated flush nozzle (SR, K, KLU, RX)

- Coolant through the center arm (SR 4, K 4, RX 4 and larger only)

Mechanism for opening the arms of the Steady Rest without springs and free from wear.

- Arms and centerpiece hardened (SLU-X, SR, K, KLU, RX)

- Easy change of rollers without loose parts

SLU-X[®]
SLUB / -A

SLU
SLU-A

SR[®] / -CL
SRA

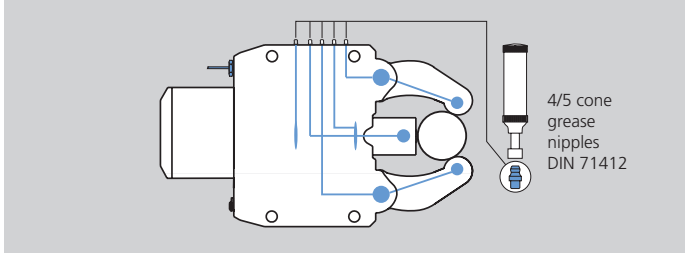
KLU / -A
K / KA

RX

Option of manual lubrication (M) (all types)

- Low cost solution for medium working conditions and low build up of swarf.
- The lubrication points and rollers are supplied with lubrication grease via the grease nipples and the grease gun.
- Lubrication intervals depending on the working conditions normally every 4 to 8 operating hours.
- Grease: KPE 2R-20 DIN 51502.

Manual lubrication (M)



Option of central oil lubrication (Z) (all types)

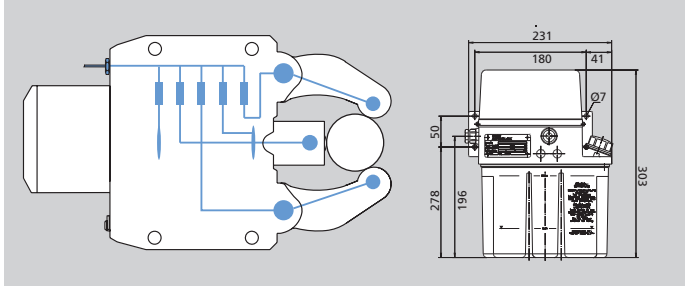
- For heavy working conditions and high build up of swarf.
- For travelling Steady Rest applications.
- The use of our separate complete lubrication unit with timer control is recommended.
- Lubricating intervals 5 - 20 min.
- Min. / max. operating pressure 10 / 45 bar.
- Oil: Viscosity of 46 mm² / s (viscosity class ISO).

Central lubrication oil (Z)

Centralized lubrication G 1/8"

Lubrication unit oil

Id. No. 088707



Option of central lubrication oil + air (OLD) (all types)

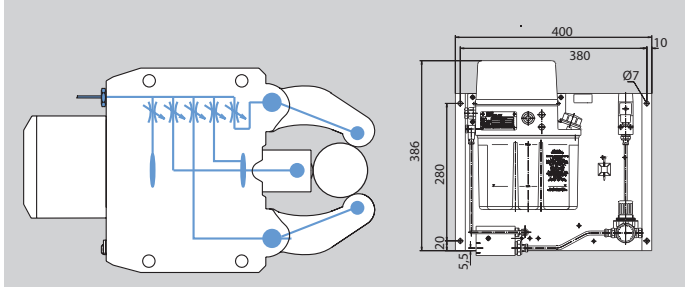
- For heaviest cutting conditions with high built up of swarf, dust or coolant.
- The SMW-AUTOBLOK oil + air unit for lubrication with built-in timer control is mandatory.
- This unit injects oil for lubrication into the air hose in adjustable intervals (1 - 4 min.).
- The permanent air flow (min. 3 bar) feeds the oil to the rollers and keeps them clean.
- Oil: Viscosity of 46 mm² / s (viscosity class ISO).

Oil + air lubrication (OLD)

Centralized lubrication G 1/8"

Lubrication unit oil + air

Id. No. 088708

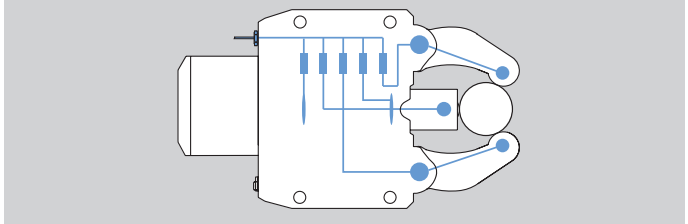


Option of central grease lubrication (F) (not SLU / SLU-A / SLUB / SLUB-A)

- For machines with central grease lubrication.
- For application and intervals please follow the instruction of the machine maker.
- Min. / max. operating pressure 30 / 45 bar.
- Grease: NLGI class 0 or 1.

Central grease lubrication (F)

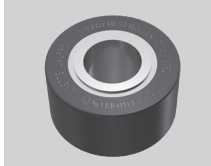
Centralized lubrication G 1/8"



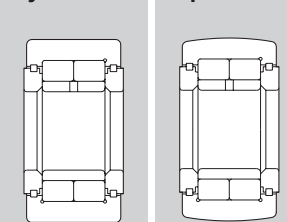
Option of rollers (all types)

- SMW-AUTOBLOK rollers (precision class P05) specially developed for our Steady Rests.
- Special sealing ensures highest precision and service life.
- Standard equipment: 1 set of cylindrical rollers.
- Option: Spherical rollers (for travelling Steady Rests), synthetic material rollers, carbide rollers.

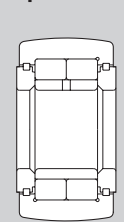
Original SMW-AUTOBLOK roller



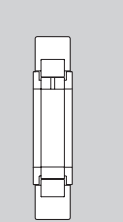
cylindrical



spherical



narrow



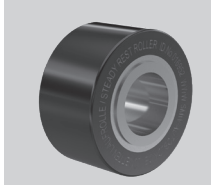
Rollers (all types)

- Rollers steel (standard): Surface of workpiece not hardened.

Available optional materials:

- Rollers synthetic material: Surface of workpiece polished or chrome plated.
- Rollers carbide: Surface of workpiece hardened.

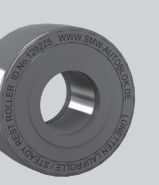
Rollers steel



Rollers synthetic material



Rollers carbide



SLU-X[®]
SLUB / -A

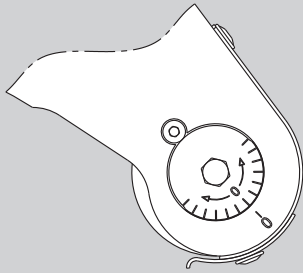
SLU
SLU-A

SR[®] / -CL
SRA

KLU / -A
K / KA

RX

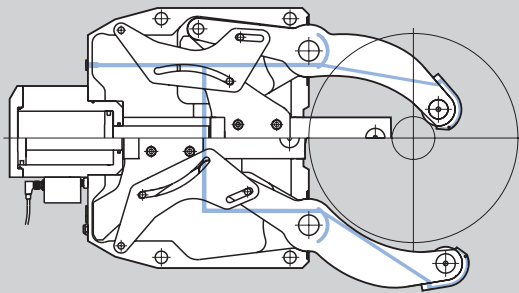
Eccentric fine adjustment



Option fine adjustment of center line (all types)

- Eccentric roller pins on the two Steady Rest arms allow a quick fine adjustment of the center line.
- Therefore no need to unlock and adjust the entire Steady Rest on the bracket for small adjusting movements.
- Adjustment of open Steady Rest only!

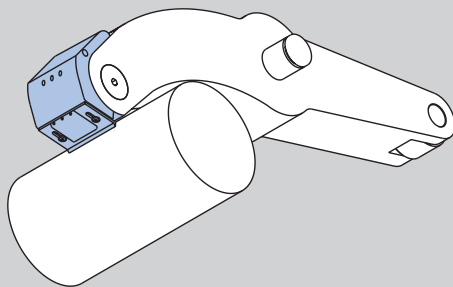
Coolant / air feed



Coolant / air feed (SR / K / KLU / RX only)

- Built-in channels to feed coolant or air from a central connecting port to the Steady Rest arms.
- Basic equipment for SR / K / KLU / RX Steady Rests.
- From size SR-4 / K4 and larger with coolant through the center arm.

Chipguard coolant / air



Patented coolant / air chipguard with integrated flush nozzles (SR / K / KLU / RX only)

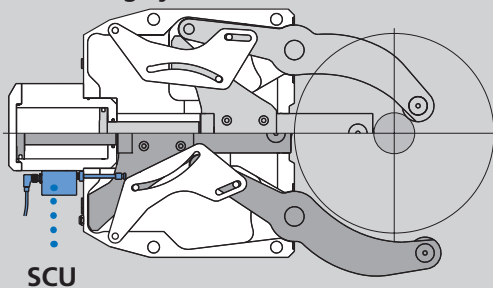
- Keeps roller clamping area free from chips.
- The patented double flush nozzles keep front and rear of the wiper area clean.

Only for Steady Rests with coolant / air feed

Benefit:

- Constant centering accuracy.
- No damage of workpiece and rollers caused by chips / swarf.
- Less roller consumption = less costs.

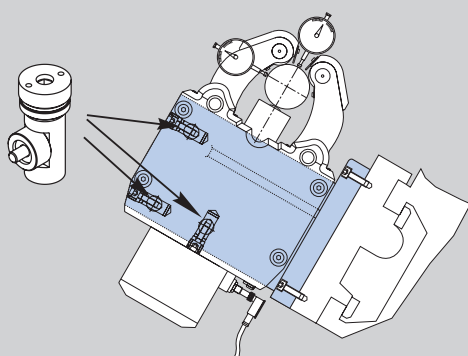
SCU diameter measuring system



Option linear diameter measuring system SCU (not SLU, SLUB, SLU-A, SLUB-A)

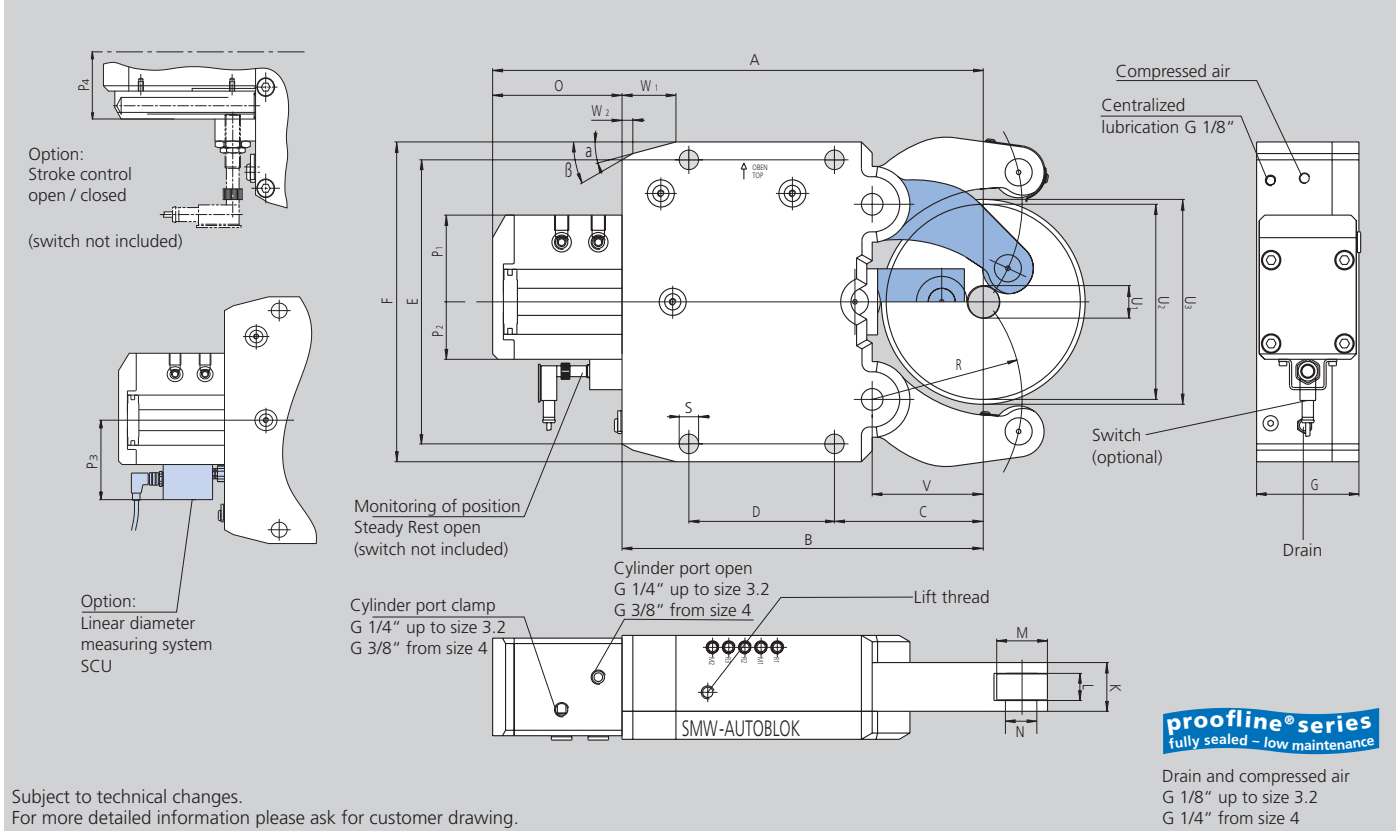
- The position of the clamping arms is monitored by the linear measuring system SCU.
- Avoids collision with workpieces, turret, loader etc.
- Reduced cycle time due to position controlled opening of the arms to the requested opening only.
- Power supply SCU: In: 24 V Out: 4 - 20 mA

Steady Rest bracket with adjustment device



Steady Rest bracket

- A suitable bracket is very important for the function / precision of the Steady Rest.
- Fast and easy adjustment can be done with the SMW-AUTOBLOK **adjustment device** integrated into the bracket.
- SMW-AUTOBLOK supplies the correct bracket for all applications as a turnkey solution.



Subject to technical changes.
For more detailed information please ask for customer drawing.

SMW-AUTOBLOK Type Size		SLU-X 1	SLU-X 2	SLU-X 3	SLU-X 3.1	SLU-X 3.2	SLU-X 4	SLU-X 5	SLU-X 5.1
Centering range without chip guard	U1	6	8	12	20	50	30	45	85
	U2	70	101	152	165	200	245	310	350
Max. axial clearing dia.	U3	75	106	164	172	202	253	320	352
Centering range with chip guard 3-piece	U1	8	12	14	20	50	30	45	85
	U2	70	101	152	165	200	245	310	350
	A	214.5	277	428	436	455	603	697	717
	B	149	195	312	320	335	448	510	530
	C	52	70	115	123	138	146	178	198
	D	66	85	135	135	135	240	270	270
	E	140	170	262	262	262	365	400	400
	F	160	195	295	295	295	405	440	440
	G	63	75	95	95	95	110	145	145
	K	28	35	45	45	45	60	75	75
Width of rollers	L	15	19	25	25	25	25	29	29
Diameter of rollers	M	24	35	47	47	47	52	62	62
Diameter of roller pins	N	8	15	20	20	20	25	30	30
	O	65.5	82	116	116	120	155	187	187
	P1	53	63	85	85	85	91	97	97
	P2	29	40	53	53	53	61	63	63
	P3	-	82	95	95	95	103	105	105
	P4	40	61	74	74	74	82	84	84
	R	55	74	119	124	139	172	209	229
	S	11	14	18	18	18	23	23	23
	V	37	51	85	93	103	128	160	180
	W1	20	30	50	50	50	58	62	62
	W2	5	11.2	10	10	10	18.3	19.1	19.1
	α	15°	15°	15°	15°	15°	15°	18°	18°
	β	45°	30°	30°	30°	30°	40°	40°	40°
Piston area*	cm²	7	19.6	38.5	38.5	38.5	63.6	78.5	78.5
Operation pressure min. / max.	bar	6 / 70	8 / 70	8 / 80	8 / 80	8 / 80	8 / 70	8 / 80	8 / 80
Max. clamping force / roller	daN	165	450	1000	1000	1000	1500	2000	2000
Centering accuracy within the whole range	mm	0.02	0.02	0.04	0.04	0.04	0.05	0.06	0.06
Repeatability accuracy	mm	0.005	0.005	0.007	0.007	0.007	0.007	0.01	0.01
Max. roller surface speed	m/min	800	800	725	725	725	715	600	600
Weight approx.	kg	8	17	50	51	59	103	168	170

* Cylinders differing from standard available on request.
Subject to technical changes!

- Ordering review
- Accessories
- Wearing parts

SLU-X Steady Rest with stroke control Steady Rest open via proximity switch (without proximity switch)

Steady Rest size		1	2	3	3.1	3.2	4	5	5.1
SLU-X-M Manual lubrication	Id. No.	127563	129001	129018	129196	129234	129141	129278	129291
SLU-X-Z Central lubrication oil	Id. No.	127562	129000	129020	129195	129235	129140	129280	129292
SLU-X-OLD Central lubrication oil + air	Id. No.	127564	129002	129019	129197	129236	129142	129279	129293
SLU-X-F Central grease lubrication	Id. No.	129761	129762	129763	129764	129765	129766	129767	129768

SLU-X Steady Rest with stroke control Steady Rest open / closed via proximity switch (without proximity switch)

Steady Rest size		1	2	3	3.1	3.2	4	5	5.1
SLU-X-M Manual lubrication	Id. No.	126155	222390	221912	223890	222400	on request	on request	on request
SLU-X-Z Central lubrication oil	Id. No.	126154	221116	221151	221152	221153	221154	221155	221156
SLU-X-OLD Central lubrication oil + air	Id. No.	126156	227175	221913	227586	on request	on request	on request	on request
SLU-X-F Central grease lubrication	Id. No.	on request	on request	221914	225348	225349	on request	on request	on request

SLU-X Steady Rest with stroke control via linear stroke control SCU, output 4 - 20 mA

Steady Rest size		1	2	3	3.1	3.2	4	5	5.1
SLU-X-Z Central lubrication oil	Id. No.	-	225830	225831	225832	225833	222513	222183	225834

SLU-X Steady Rest with stroke control via linear stroke control SCU, output 0 - 10 V

Steady Rest size		1	2	3	3.1	3.2	4	5	5.1
SLU-X-Z Central lubrication oil	Id. No.	-	on request	on request	on request	on request	on request	on request	on request

Type SLU-X

◆ means wearing parts, recommended stock items

Steady Rest size		1	2	3	3.1	3.2	4	5	5.1
Compact lubrication system for oil pressure lubrication Container 2.7 l, 220 V *,**		088707	088707	088707	088707	088707	088707	088707	088707
Compact lubrication system for oil & air lubrication Container 2.7 l, 220 V *,**		088708	088708	088708	088708	088708	088708	088708	088708
Eccenter fine adjustment compl. at lever arm (2 pcs. per Steady Rest)		-	127237	127240	127240	127240	128474	128584	128584
Inductive limit switch		087926	087926	087926	087926	087926	087926	087926	087926
Swarf guard 3-pieces	◆	126171	026116	026117	026117	026117	026118	026119	026119
Spring loaded chip-guard***	◆	226668	025760	025759	025759	025759	025758	025757	025757
Roller pin with collar***	◆	226656	225317	221112	221112	221112	204052	125824	125824
Roller stripper (2-pieces) for middle piece	◆	200155	200154	198950	198950	198950	196199	196200	196200
Rollers cylindrical design	◆	023122	016952	016951	016951	016951	016953	018345	018345
Rollers spherical design	◆	028738	017658	018433	018433	018433	018443	019545	019545
Rollers synthetic material****	◆	225135	029451	023443	023443	023443	023672	023650	023650
Roller stripper (2-pieces) for middle piece with roller synthetic material	◆	-	204211	204212	204212	204212	204213	204215	204215
Rollers carbide	◆	224747	129223	129225	129225	129225	220918	222038	222038
Adjustment device 1 set = 3 pieces		-	-	200178	200178	200178	200179	200179	200179

* When placing an order please advise voltage.

** On request 110 V available.

*** Use of spring located chip-guard only possible in combination with roller pin with collar.

**** Attention: Reduced clamping force! Please refer to the clamping force value marked on the roller.