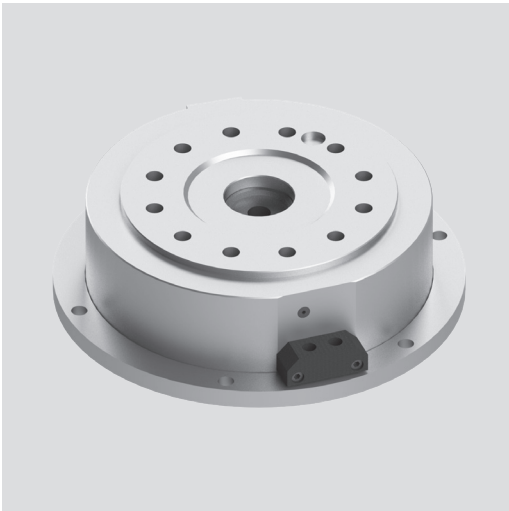


- Can be equipped with different types of chucks
- With stroke control



Application/customer benefits

- Gripping of components on vertical or horizontal machining centers

Technical features

- Standard pneumatic cylinder can be equipped with various type of chucks:
 - 2 / 3 / 4 jaws versions depending on chuck model and diameter
 - Standard or sealed, depending on applied chuck
 - Master jaw with serration or Tongue & Groove available
 - Normal or long stroke depending on chuck model and diameter
- Permanent air pressure required
- Optional SAB safety valve to hold pressure during pallet transfer

Remark: The clamping unit consists of static cylinder + connection kit + chuck to be selected.

For chuck details, please see the technical data of the selected chuck.

Standard equipment

Static cylinder
the connection kit must be added,
see the table on next page

Ordering example

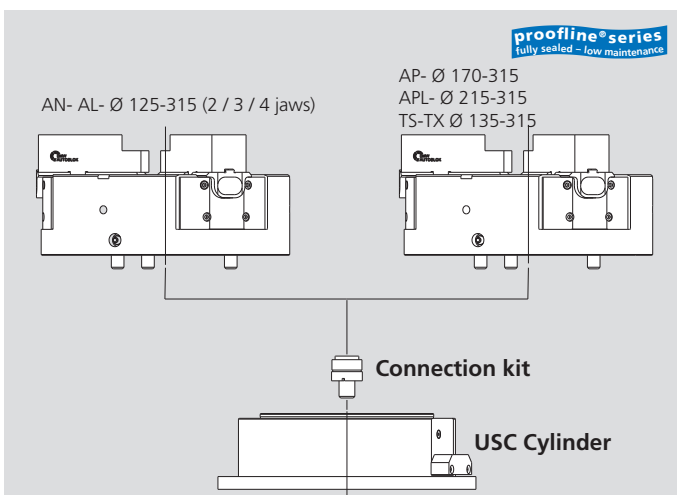
Please see the below table for part numbers and part descriptions

Accessories

Valve SAB1 Id. No. 27581610 for USC 140/170

Valve SAB2 Id. No. 27581620 for USC 210/260

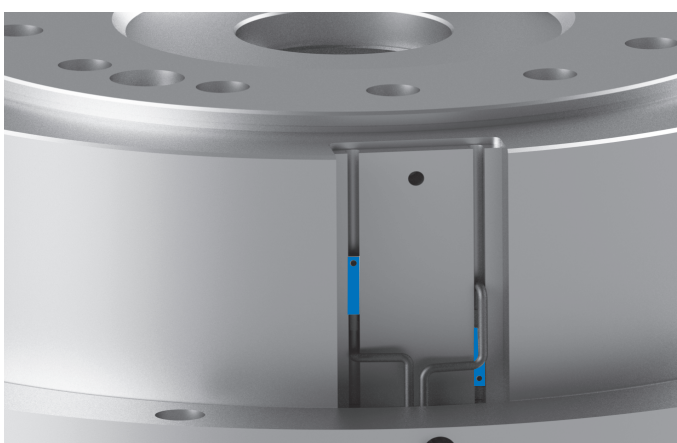
Mounting brackets



- **USC-AN** = cylinder equipped with a 2 / 3 jaw chuck type AN-(normal stroke). Chuck until to Ø 315 mm
- **USC-AL** = cylinder equipped with a 2 / 3 jaw chuck type AL-(long stroke). Chuck until to Ø 315 mm
- **USC-TS** = cylinder equipped with a 2 / 3 jaw chuck type TS-. Chuck from Ø 135 to 315 mm
- **USC-TX** = cylinder equipped with a 3 jaw chuck. Chuck from Ø 170 to 315 mm
- **USC-AP** = cylinder equipped with a 3 jaw chuck type AP-(normal stroke). Chuck until to Ø 315 mm
- **USC-APL** = cylinder equipped with a 3 jaw chuck type APL-(long stroke). Chuck Ø 170 to 315 mm

Stroke control

The stroke control system consists of two built in magnets and two external sensors (Id.-Nr. 71834910) reading the axial position of the cylinder piston and consequently of chuck jaws mounted on it. The stroke control gives the following signals: „chuck fully open“, „chuck fully closed“ or „part clamped“ positions.



Technical data

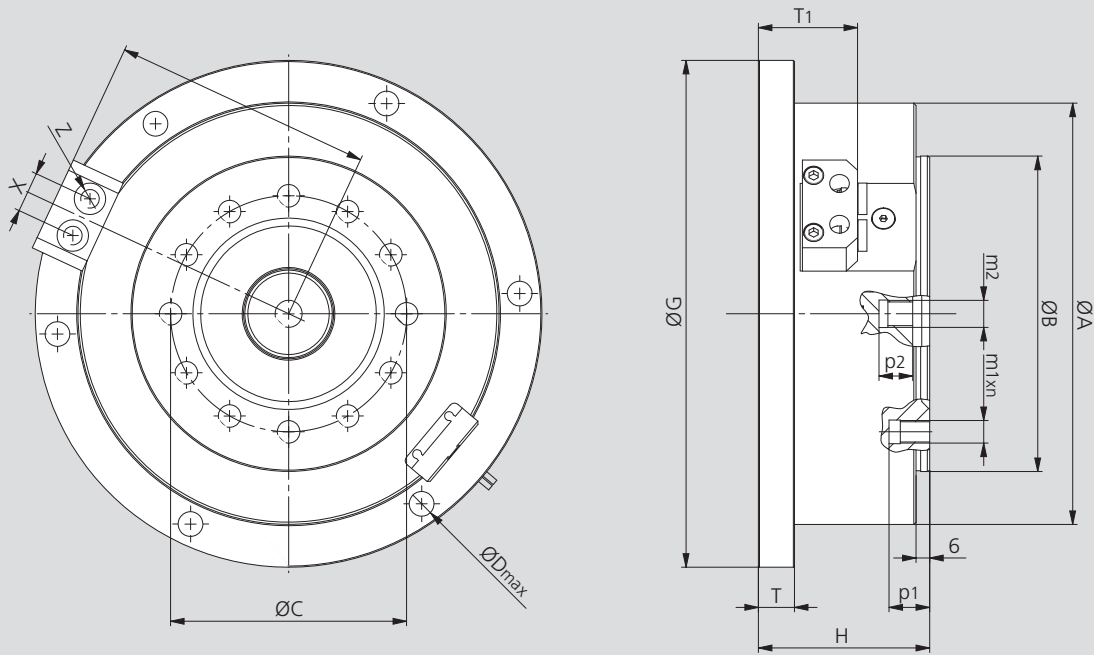
| SMW-AUTOBLOK Type Id. No. | | USC 140 97501407 | USC 170 97501702 | USC 210 97502106 | USC 260 97502601 |
|----------------------------|-----------------|---------------------|---------------------|---------------------|---------------------|
| Piston area-chuck (open) | cm ² | 133 | 189 | 269 | 434 |
| Piston area-chuck (closed) | cm ² | 126 | 176 | 249 | 409 |
| Max. operating pressure | bar | 7 | 7 | 7 | 7 |
| Piston stroke | mm | 17 | 22 | 26 | 31 |
| Pushforce at 6 bar | kN | 8 | 11 | 16 | 26 |
| Pullforce at 6 bar | kN | 7.5 | 10.5 | 15 | 24.5 |
| Cylinder unit mass | kg | 3.3 | 5 | 7 | 12.5 |

Stationary cylinder + chuck unit Ø 140 - 260 mm

- Can be equipped with different types of chucks
- With stroke control

USC

Pneumatic static cylinder



Subject to technical changes.
For more detailed information please ask our customer service.

| SMW-AUTOBLOK Type Id. No. | | USC 140 97501407 | USC 170 97501702 | USC 210 97502106 | USC 260 97502601 |
|------------------------------|------|---------------------|---------------------|---------------------|---------------------|
| A | mm | 162 | 187 | 217 | 275 |
| B | mm | 115 | 140 | 170 | 220 |
| C | mm | 82.6 | 104.8 | 133.4 | 171.4 |
| D | mm | 11 | 11 | 11 | 13 |
| G | mm | 200 | 225 | 255 | 327 |
| H | mm | 61.5 | 76 | 83 | 95 |
| Q | mm | 98 | 110.5 | 129.5 | 158.5 |
| T | mm | 16 | 16 | 16 | 16 |
| T1 | mm | 38.5 | 40,5 | 43,5 | 43,5 |
| X | mm | 18 | 18 | 22 | 22 |
| Z | inch | 1/8" | 1/8" | 1/4" | 1/4" |
| m1 | mm | M10 | M10 | M12 | M16 |
| m2 | mm | M10 | M12 | M16 | M20 |
| n | mm | 12x | 12x | 12x | 12x |
| p1 | mm | 14 | 18 | 19 | 23 |
| p2 | mm | 18 | 15 | 21 | 25 |

Ordering review connection kit

| Size | 125 AN-AL | 135 TS | 165 AN-AL | 170 AP | 170 TS/TX | 210 AN-AL | 210 TS-TX | 215 AP-APL | 250 AN-AL | 250 TS-TX | 260 AP-APL | 315 AN-AL | 315 TS-TX | 315 AP-APL |
|---------|-----------|----------|-----------|----------|-----------|-----------|-----------|------------|-----------|-----------|------------|-----------|-----------|------------|
| USC 140 | 75511410 | 75511470 | - | - | - | - | - | - | - | - | - | - | - | - |
| USC 170 | - | - | 75511760 | 75511760 | 75511770 | - | - | - | - | - | - | - | - | - |
| USC 210 | - | - | - | - | - | 75512110 | 75512170 | 75512160 | - | - | - | - | - | - |
| USC 260 | - | - | - | - | - | - | - | - | 75512610 | 75512670 | 75512660 | 75512620 | 75512670 | 75512660 |

- If the cylinder operates an AN / AL chuck (with 2 / 3 / 4 jaws and various jaw types), the chuck must be ordered separately.
- If the cylinder operates an AP / APL chuck (only 3 jaws available and various jaw types), the chuck must be ordered separately.
- If the cylinder operates a TS / TX chuck (only 3 jaws available and various jaw types), the chuck must be ordered separately.
- For technical information on the chucks, please see the specific catalogue page. (more information at general catalog turning).
- For the chucks Id. Numbers, please see our price lists or ask a quotation to your nearest SMW-AUTOBLOK office.

JAWS-CATALOG
Request or
download:
www.smw-autoblok.de

