



<b>APS 140</b>	<b>Module height extension with APS 140 E PREMIUM</b>
----------------	---

<b>APS 140</b>	<b>Module height extension with APS 140 E PREMIUM</b>
----------------	---



### Application/customer benefits

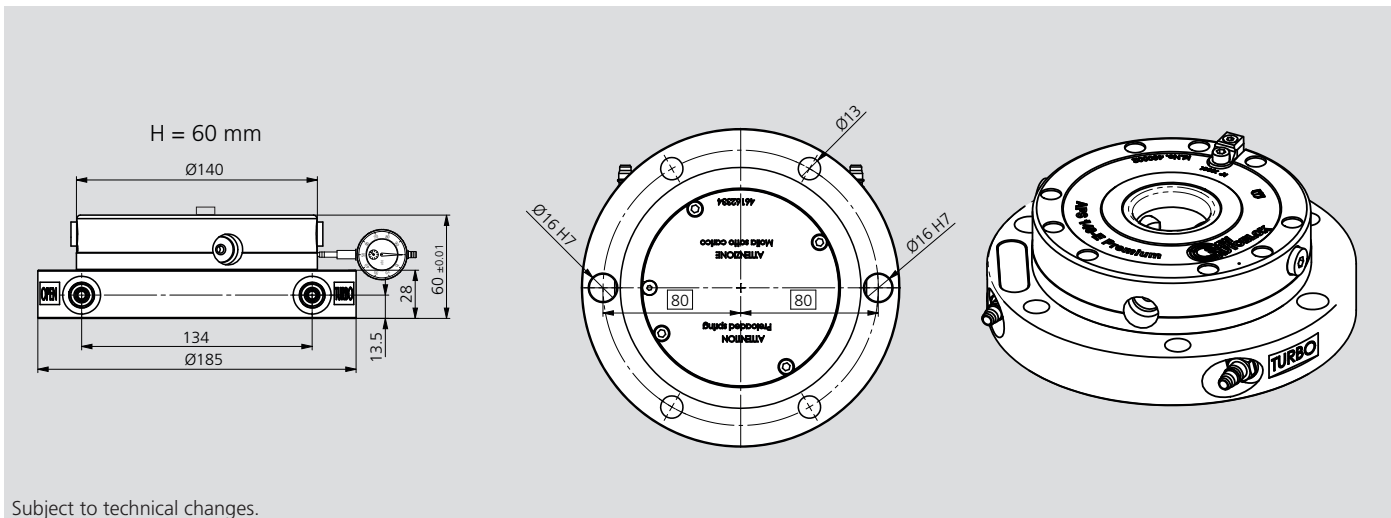
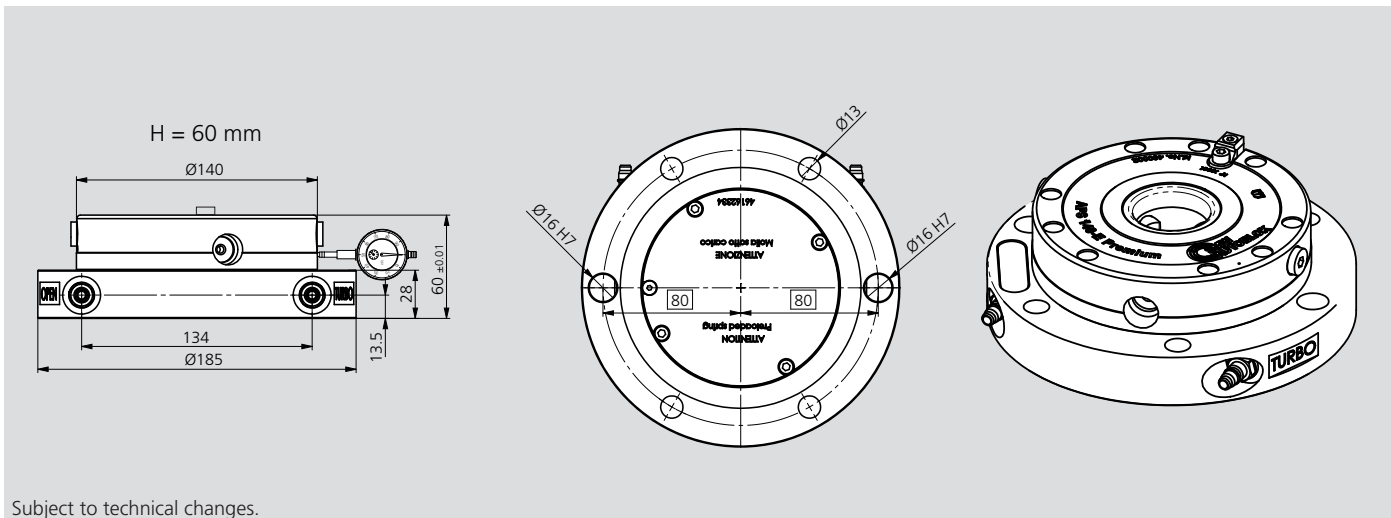
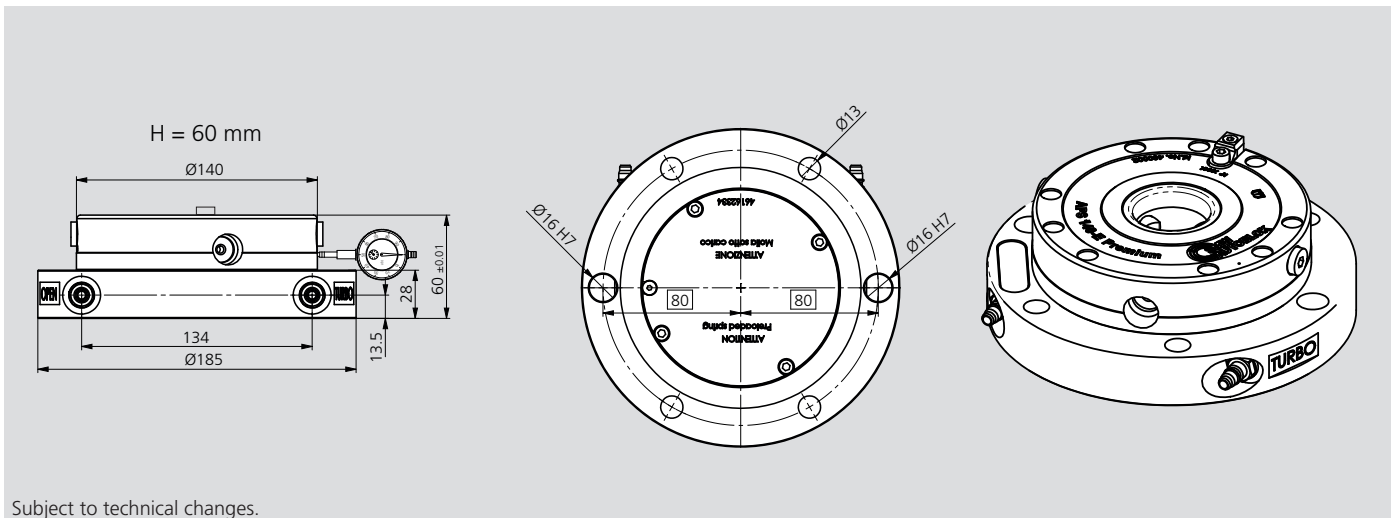
- ### Application/customer benefits

## Technical features

- ## Technical features

### Standard equipment

### Standard equipment



## Order numbers

Module height extension (APS included)	Id. No.	Height [mm]	Weight [kg]
Module extension APS 140 Premium H60	460112	60	8

**Note 1:** For every unit the key (Id. No. 46162333) is included.

**Note 2:** For the pair of clamps please see accessories APS on page 65.



### Application/customer benefits

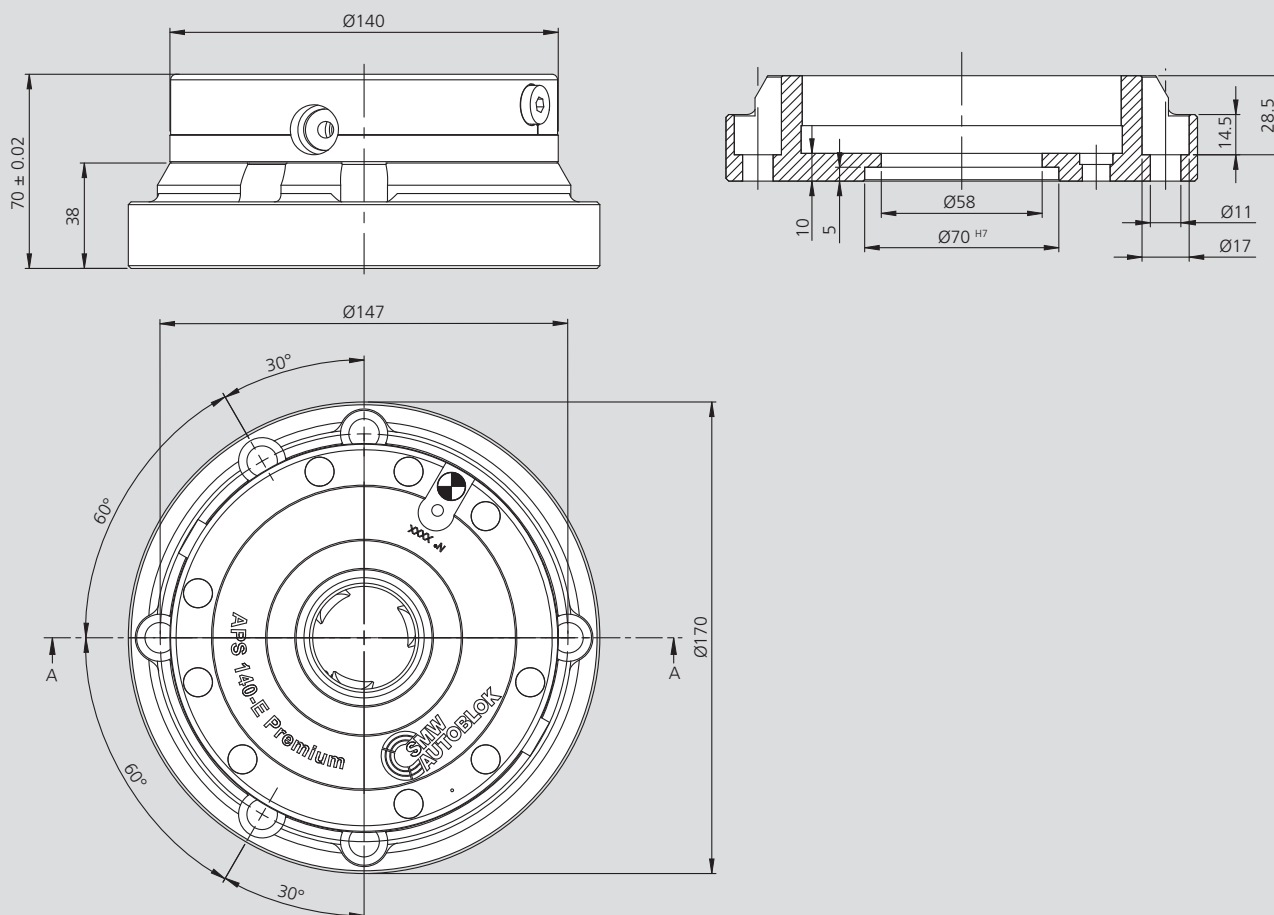
- Flange for indexing tables and CNC indexing tables with T-slots flange

### Technical features

- 3 clamping slides
- Repeatability < 0.005 mm
- Turbo function to increase the pull-in forces (pull-in force without Turbo 7.5 kN)
- Anti rotation key-seat
- Air sensing
- Air cleaning
- Fully sealed (proofline)

### Standard equipment

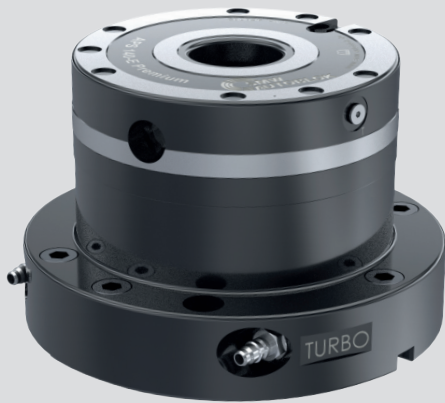
Flange with 1 APS 140 modul for indexing tables  
and for orientation on indexing tables with T-slots



Subject to technical changes.

### Order numbers

Module height extension (APS included)	Id. No.	Höhe [mm]	Gewicht [kg]
Module height extension	46167620	70	17



### Application/customer benefits

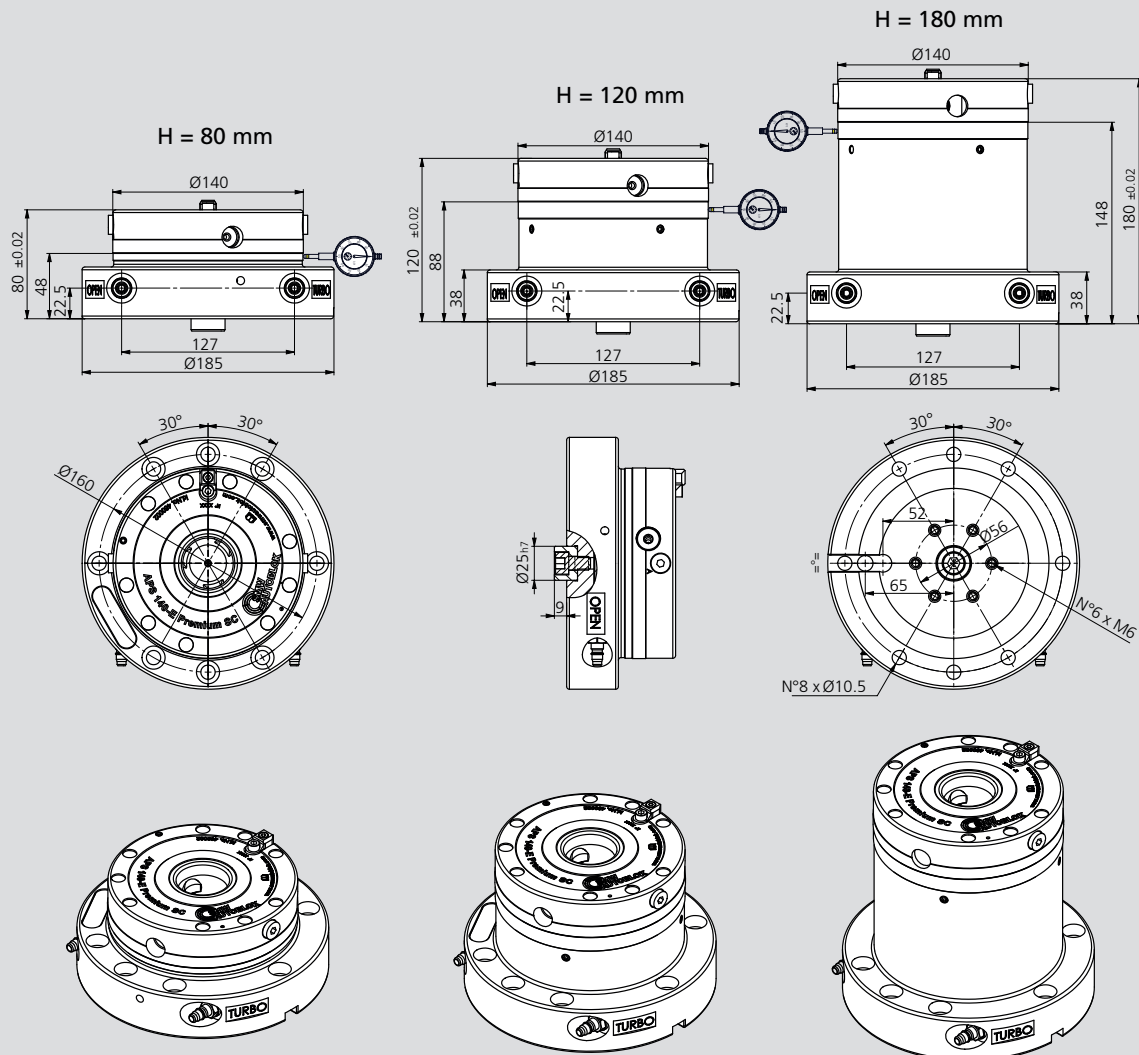
- Pre-assembled module extension unit with 1 piece APS 140 Premium
- Universal applicable
- Fast and easy set-up

## Technical features

- 3 clamping slides
- Repeatability < 0.005 mm
- Turbo function to increase the pull-in forces (pull-in force without Turbo 7.5 kN)
- Anti rotating protection
- Air cleaning

### Standard equipment

Module height extension with 1 piece APS 140 Premium



Subject to technical changes.

Module height extension (APS included)	Id. No.	Height [mm]	Weight [kg]
Module extension APS 140 Premium H80	460113	80	11
Module extension APS 140 Premium H120	460114	120	14
Module extension APS 140 Premium H180	460115	180	18

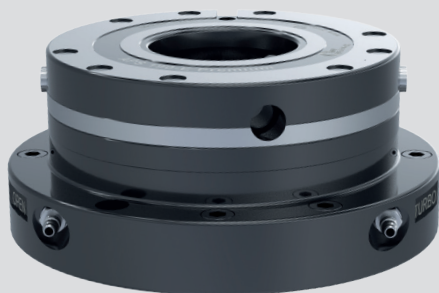
**Note 1:** For every unit the key (Id. No. 46162133) is included

**Note 2:** Optional T-nuts sets: 46204100 with T-slot 12 / 46204101 with T-slot 14 / 46204102 with T-slot 18. Drawings and shares of these sets.

**Note 3:** Mountable also on APS 190 and APS 140.

**Note 4:** When use the module in rotation (200-1000 r.p.m.) request balancing (listed separately).

**Note 5:** The module extension is equipped with radial screws for the fine centering of the APS.



### Application/customer benefits

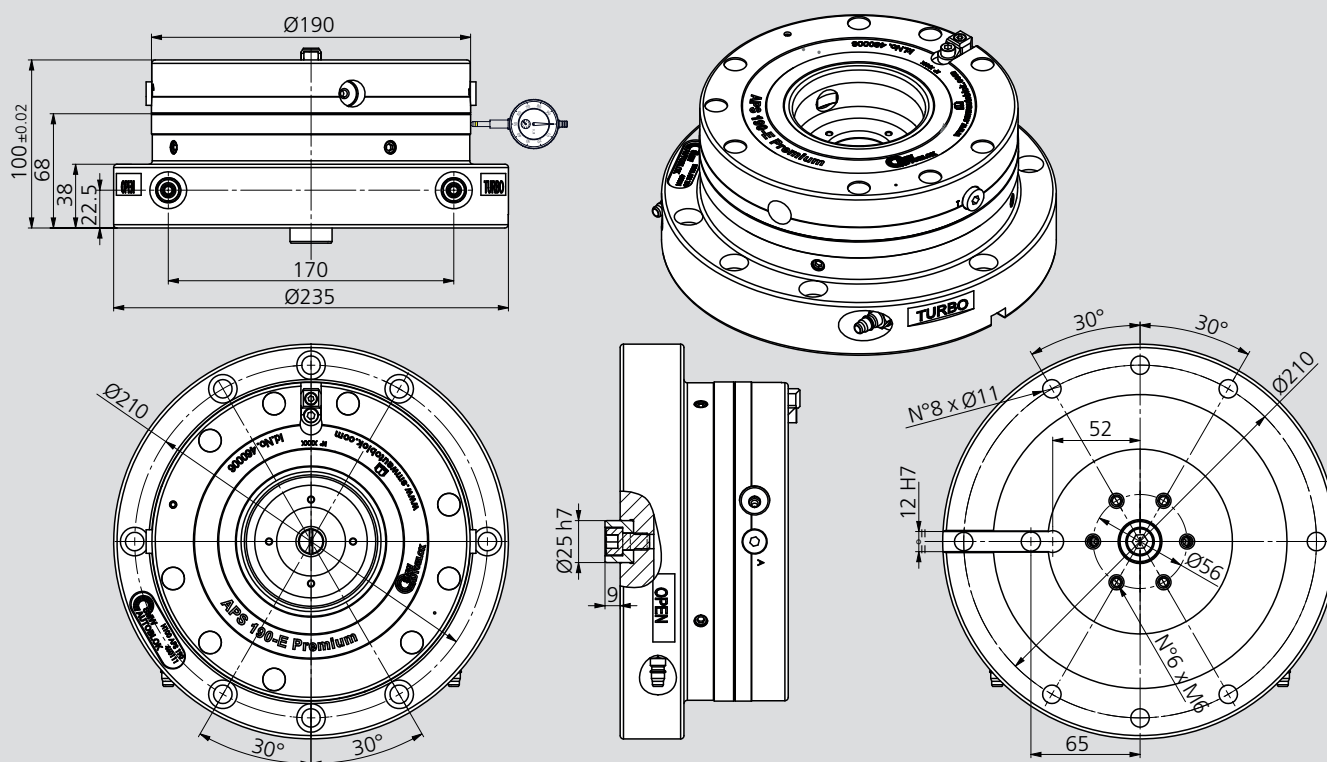
- Pre-assembled module extension unit with 1 piece APS 190 Premium
- Universal applicable
- Fast and easy set-up

### Technical features

- 3 clamping slides
- Repeatability < 0.005 mm
- Turbo function to increase the pull-in forces (pull-in force without Turbo 7.5 kN)
- Anti rotating protection
- Air cleaning

### Standard equipment

Module height extension with 1 piece APS 190 Premium



Subject to technical changes.

## Order numbers

Module height extension (APS included)	Id. No.	Height [mm]	Weight [kg]
Module extension APS 190 PREMIUM H100	460111	100	20.5

**Note 1:** For every unit the key (Id. No. 46162133) is included

**Note 2:** Optional T-nuts sets: 46204100 with T-slot 12 / 46204101 with T-slot 14 / 46204102 with T-slot 18. Drawings and shares of these sets.

**Note 3:** Mountable also on APS 190 and APS 140.

**Note 4:** When use the module in rotation (200-1000 r.p.m.) request balancing (listed separately).

**Note 5:** The module extension is equipped with radial screws for the fine centering of the APS.