

- For standard collets
- Manual actuated



Application/customer benefits

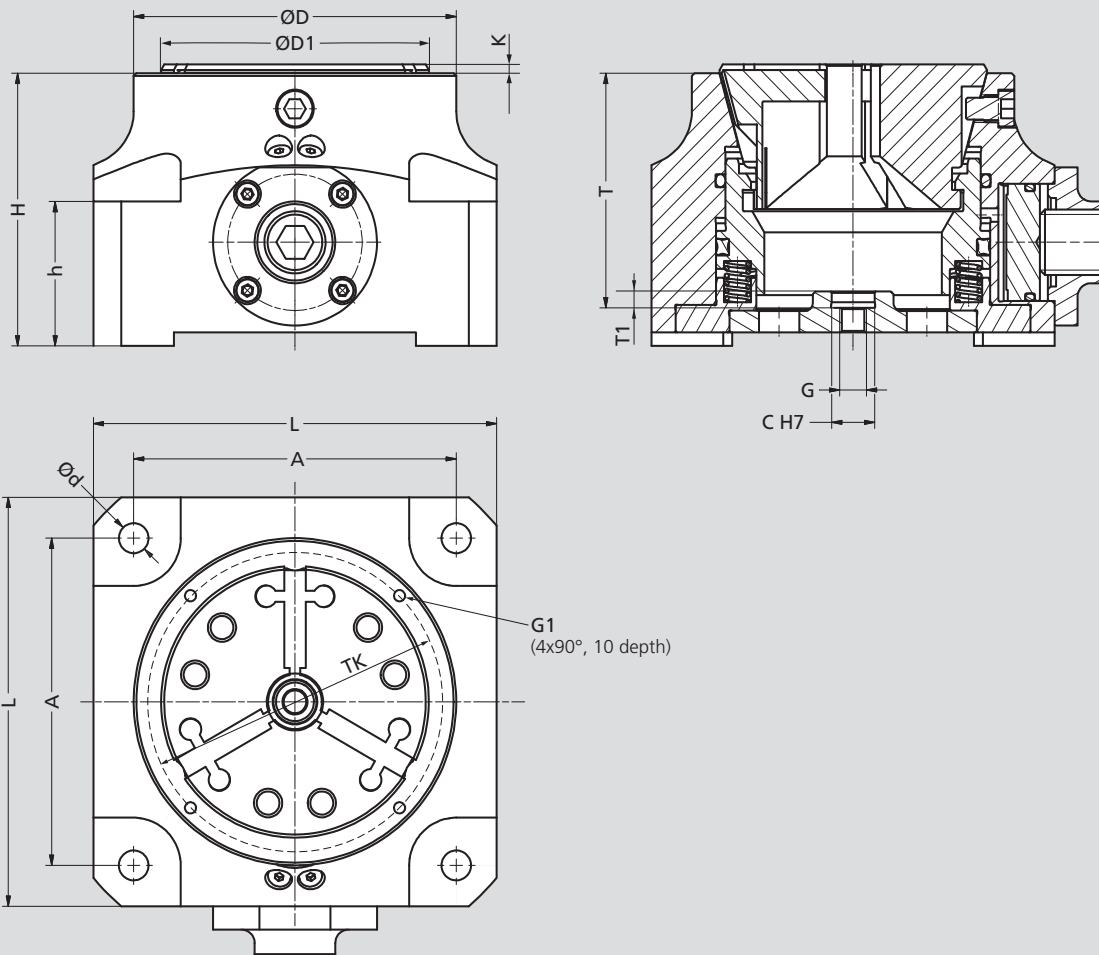
- Highest clamping forces and stiffness for best machining quality
- Maximum economy due to quick change of collets and fast mounting
- High flexibility due to the use of standard collets
- Ideal for 5-axis machining due to the compact design
- Sensitive adjustment of the clamping force

Technical features

- Manual actuated by fast clamping function (clamping wrench SW 12)
- Repeatability ≤ 0.01 mm
- Pull-down effect
- Workpiece stop optional
- Horizontal or vertical mounting
- Threads for mounting a front stop

Standard equipment

Stationary chuck with clamping wrench



Subject to technical changes.

Order review

Type	Id.-No.	A	L	B	H	ØD	ØD1	Ød	h	K	G	G1	T	T1	TK	ØC	Max. [kN]	Clamp. range [mm]	Weight [kg]
GTO 42	462500	100	130	130	100	100	81	11	53	5.5	M8	M5	87	7	90	12	80	4 - 42	7.9
GTO 65	462501	120	150	150	100	120	101.2	11	53	6	M10	M5	86	6	110	16	105	4 - 65	9.6
GTO 100	462502	170	200	200	110	165	146	13	60	4	M12	M5	95	10	155	20	150	40 - 100	17.5

D1 = Diameter of the collet (unclamped)
Max. kN = Maximum total clamping force

Pneumatic actuated version on request.