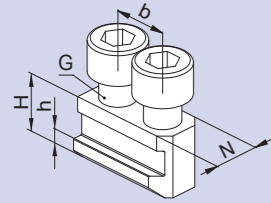


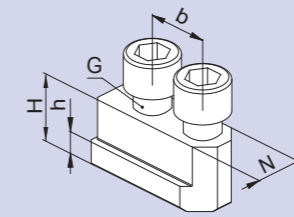
# NSTE-M



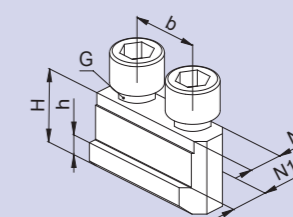
Version 1

## Double T-nuts for base jaws with METRIC SERRATION

- Quenched and ground
- Incl. screw ISO 4762 – 12.9



Version 2



Version 3



Please observe!  
Always tighten T-nuts with a torque wrench.

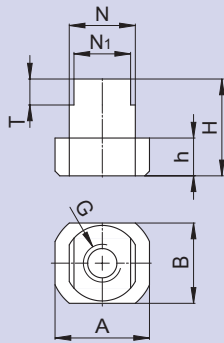
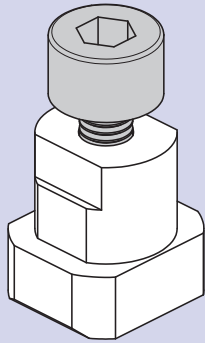
| Type         | Id. No.  | Version | N       | H    | h    | b  | G   | Screw ISO 4762 | Torque Md max. (Nm) | SMW-AUTOBLOK   |
|--------------|----------|---------|---------|------|------|----|-----|----------------|---------------------|--|
| NSTE-M 105   | 091508   | 2       | 10      | 15   | 5    | 14 | M8  | M8 x 20        | 30                  |  |
| NSTE 12      | 12061300 | 2       | 12      | 15   | 6.5  | 16 | M8  | M8 x 20        | 30                  | BH-M 130 • BB-M 140<br>HB/PB-M 130   |
| NSTE 12-1    | 12061200 | 1       | 12      | 15   | 5.5  | 16 | M8  | M8 x 20        | 30                  | AN-M 125 • AL-M 125  |
| NSTE-M 120   | 73061602 | 1       | 12      | 18.5 | 6.5  | 20 | M10 | M10 x 20       | 50                  | AN-M 165 • AL-M 165<br>BH-M 165 • BHM-FC 165<br>RC-M 165 • PB-M 165<br>PBI-M 165 • HB-M 165<br>BB-M 175 • AP/NT-M 170              |
| NSTE-M 121   | 081833   | 2       | 12      | 22   | 7    | 20 | M10 | M10 x 25       | 50                  |  |
| NSTE-M 125   | 012534   | 2       | 12      | 18.5 | 7.5  | 20 | M10 | M10 x 25       | 50                  |  |
| NSTE-M 140   | 73062101 | 1       | 14      | 20.5 | 7.5  | 25 | M12 | M12 x 25       | 70                  | AN-M 210 • AL-M 210<br>BH-M 210 • BHM-FC 210<br>RC-M 210 • PB-M 210<br>PBI-M 210 • HB-M 210<br>BB-M 210 • AP/NT-M 215<br>APL-M 215 |
| NSTE-M 141   | 081834   | 2       | 14      | 24.5 | 8.5  | 25 | M12 | M12 x 35       | 70                  |  |
| NSTE-M 145   | 012535   | 2       | 14      | 20.5 | 8.5  | 25 | M12 | M12 x 30       | 70                  |  |
| NSTE-M 160   | 73062501 | 1       | 16      | 26.5 | 10   | 30 | M12 | M12 x 30       | 70                  | AN-M 250 • AL-M 250<br>BH-M 250 • BHM-FC 250<br>RC-M 250 • PB-M 250<br>PBI-M 250 • HB-M 250<br>BB-M 250                            |
| NSTE-M 160-1 | 18062633 | 1       | 17/16   | 20.5 | 7.5  | 30 | M12 | M12 x 30       | 70                  | AP/APL-M 260 • NT-M 260  |
| NSTE-M 161   | 080547   | 2       | 16      | 24.5 | 8.5  | 30 | M12 | M12 x 35       | 70                  |  |
| NSTE-M 162   | 081835   | 2       | 16      | 23   | 8    | 30 | M12 | M12 x 30       | 70                  |  |
| NSTE-M 165   | 012546   | 2       | 16      | 21.5 | 8.5  | 30 | M12 | M12 x 30       | 70                  |  |
| NSTE-M 167   | 081836   | 2       | 16      | 26.5 | 8.5  | 25 | M12 | M12 x 35       | 70                  |  |
| NSTE-M 181   | 081837   | 2       | 18      | 33.5 | 13.5 | 30 | M14 | M14 x 45       | 130                 |  |
| NSTE-M 187   | 019359   | 2       | 18      | 27.5 | 9.5  | 30 | M14 | M14 x 40       | 130                 |  |
| NSTE 21-2    | 73063050 | 1       | 21      | 26.5 | 10   | 30 | M16 | M16 x 30       | 150                 | AN/AL/AP/APL/NT/BH/BB-M 315<br>PP/HB/PBI-M 315<br>BHM-FC 315 • RC-M 305<br>AP/APL/NT-M 400 • BHM -FC 400                           |
| NSTE-M 220   | 12064020 | 2       | 22/25.5 | 34.5 | 15   |    | M20 | M20 x 40       | 150                 |  |
| NSTE-M 212   | 081839   | 2       | 21      | 28   | 11.5 | 30 | M16 | M16 x 40       | 150                 |  |
| NSTE-M 213   | 236521   | 2       | 21      | 23   | 11.5 | 30 | M16 | M16 x 35       | 150                 |  |
| NSTE-M 227   | 081842   | 3       | 22/24   | 45.5 | 16.5 | 43 | M20 | M20 x 60       | 300                 |  |
| NSTE-M 22    | 12064020 | 3       | 22/25.5 | 34.5 | 15   |    | M20 | M20 x 40       | 300                 | AN-M 400 • AL-M 400<br>BH-M 400/450  |

| Howa  | Samchully                        | Kitagawa  | Schunk   |
|---|----------------------------------|---|--|
|   |                                  | B204 • B205   |  |
| HO 1 MA 6 • HO 7 MA 6<br>HO 24 M 6 • HO 27 M 6<br>HO 15 M 6 • HO 22 M 6<br>HO 47 M 6 • HO 37 M 6                              |                                  | HJA 5-6 • HO 6 • N-160 • HOS 6<br>HOH 06 • N 160 • B 06 • N 06<br>B-160 • HOB 6 • AS 165 • HOH-160  | HSL 165 (1.5 x 60°)<br>ROTA NC/NCF 165                                   |
|   |                                  | B-206 • B 06 • B 106 • B 07<br>HOH 106 • HOH 06 • BB 06<br>BB 206 • HOH 206   | ROTA NCK 165<br>ROTA NCK Plus 165  |
| HO 1 MA 8 • HO 2 MA 8<br>HO 23 M 8 • HO 7 M 8 • HO 15 M 8   | HCH 08                           | HJA 6-8 • HO 8 • HOH 08 • N-200<br>HOS 8 • B 08 • B-200 • HOB 8<br>AS 210 • HOH-200 • N 08 • N 200<br>B-208 • B 108 • HOH 108 • HOH 208<br>B 208 • BB 208 • BB 08 | HSL 210 (1.5 x 60°)<br>ROTA NC/NCF 210                                   |
|   | HC 10<br>HCH 10                  | B-250 • AS 250 • HOS 10 • B 10<br>AS 250 • HOB-10 • HO-10<br>HJA 8-10 • HOH 250 • N 10 • N 250  | HSL 250 (1.5 x 60°)<br>ROTA NC/NCF 250                                   |
| HO 1 MA 10 • HO 2 M 10  | MH 208 • HS 08<br>MH 210 • HS 10 | B-110 • HOH 110 • B-210 • HOH 210<br>BB 210 • BB 10   | ROTA NCK 250<br>ROTA NCK Plus 250  |
| HO 7 MA 10 • HO 15 M 10<br>HO 22 M 8 • HO 47 M 8<br>HO 23 M 10 • HO 27 M 8<br>HO 24 M 8 • HO 37 M 8<br>HO 1 MA 12 • HO 2 M 12 | HC 12 • HS 12                    | B-300 • HO-12 • HOH-300 • HOS 12<br>B 12 • N 12 • HOH 12 • N-300<br>HOB 12 • HLA 6-12 • HLA 6-15<br>HLA 8-12 • HJA 8-15   | ROTA NC/NCF 315  |
| HO 7 MA 12 • HO 22 M 10<br>HO 23 M 12 • HO 37 M 10<br>HO 27 M 10 • HO 24 M 10<br>HO 15 M 12 • HO 47 M 10                      |                                  |   | HSL 315  |
|   | MH 212<br>HS 12                  | B 212 • HOH 212 • B-112 • HOH 112   | ROTA NCK 315 • ROTA NCK Plus 315<br>ROTA NCD 315<br>ROTA NC/NCF Plus 315 |
|   |                                  | BB 212<br>B-380 • B-15 • B-18 • B-450<br>HOH 380 • HOH-18 • HOB-15<br>HOB 18 • HOH 15   | HSL 400<br>ROTA NC/NCF 400   |

## Special T-nuts to customer request

- Existing top jaws can be adapted to different chucks by using stepped T-nuts
- Simply copy and fax to: +49 (0) 7542 3886
- Download from [www.smw-autoblok.de](http://www.smw-autoblok.de)

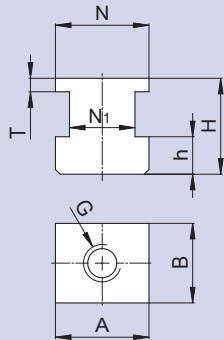
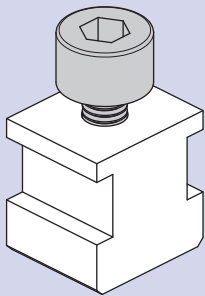
### T-nuts type NSO 10



#### Dimensions

|            |    |    |    |
|------------|----|----|----|
| A          | mm | H  | mm |
| B          | mm | N  | mm |
| G (thread) |    | N1 | mm |
| h          | mm | T  | mm |

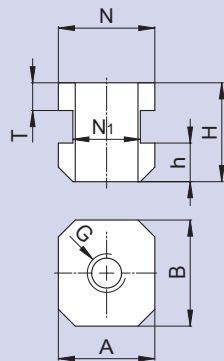
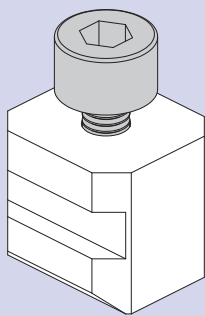
### T-nuts type NSO 20



#### Dimensions

|            |    |    |    |
|------------|----|----|----|
| A          | mm | H  | mm |
| B          | mm | N  | mm |
| G (thread) |    | N1 | mm |
| h          | mm | T  | mm |

### T-nuts type NSO 30



#### Dimensions

|            |    |    |    |
|------------|----|----|----|
| A          | mm | H  | mm |
| B          | mm | N  | mm |
| G (thread) |    | N1 | mm |
| h          | mm | T  | mm |